



BACKWARD CLASS YOUTH RELIEF COMMITTEE'S
BHIWAPUR MAHAVIDYALAYA

BHIWAPUR DIST. NAGPUR- 441201
ACCREDITED WITH GRADE 'B' (CGPA-2.54) BY NAAC, BENGALURU
ISO-9001:2015

**2.7.1. STUDENT SATISFACTION SURVEY (SSS) ON OVERALL INSTITUTIONAL
PERFORMANCE AND ACTION TAKEN REPORT**

ACADEMIC SESSION- 2022-23

Introduction

Student Satisfaction Survey, recommended by National Assessment and Accreditation Council includes questions to elicit responses from the students on the various aspects of teaching – learning, infrastructure, knowledge dissemination, use of ICT in Teaching – learning pedagogy, Student centric approaches etc. The survey is an inherent part of the mechanisms of the Institution apart from feedback to correct itself through its exit feedback given by the outgoing Students of the Institution.

The Student Satisfaction Survey has been collected from the outgoing students from the following disciplines: Bachelor of Science, Bachelor of Arts, Bachelor of Commerce, and Bachelor of Vocation.

Student Satisfaction Survey form link- <https://forms.gle/9HKcAyhRwGmZZ9kv7>

Bachelor of Science

Analysis

Learners have given their responses on a 5 -point Likert Scale. The mode of collection was survey form.

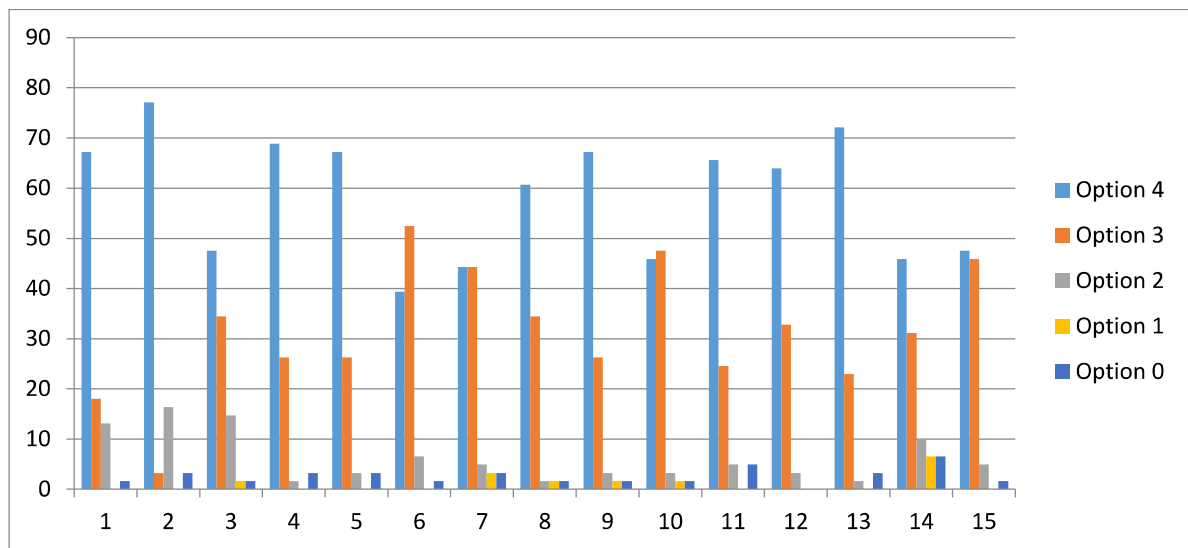
Option 4: 2.934
Option 3: 1.568
Option 2: 0.311
Option 1: 0.054
Option 0: 0.131

Remarks & Suggestions by Students

One of the Questions which was as given, 'What percentage of teachers use ICT tools such as LCD, Projector, Multimedia, etc. while teaching' to which the elicited response on the Likert scale was 6% which suggests an introspection in this regard needs to be done.

Action Taken on the Remarks and Suggestions

As mentioned above, the Institution through its Feedback on Teachers by Students has analyzed and has taken cognizance of the remarks. All the representation given to the students on various Bodies and Committees has been displayed on the Notice Board and through oral communication in the class rooms. Students' awareness in this regard has been ensured and the Institution abides by its review of quality policy through feedbacks.



On X-axis – Question number

On Y-axis- Response in %

1. For question 1 – 67% students responded to 85% to 100%, 18% students responded to 70 to 84%, 13% to 55 to 69% and 2% to below 30%.

Interpretation- It is hereby inferred that 67% students responded that 85% to 100% has been covered in the class, 18% students responded that 70 to 84% and 13 responded 55 to 69% and 2% to below 30% syllabus covered in the class.

2. For question 2- 77% students responded to always effective, 3% responded to sometimes effective, 17% responded to satisfactorily and 3% to very poor in communication.

Interpretation- 77% students responded that teachers were always effectively able to communicate, 3% responded sometimes effective, 17% responded satisfactorily and 3% to very poor in communication.

3. For question 3- 48% students responded excellent, 34% responded very good, 15% good, 2% responded fair and 1% students responded poor.

Interpretation- 48% students responded excellent, 34% responded very good, 15% good 2% students responded fair and 1% students responded poor for the teachers approach for teaching.

4. For question 4- 69% students responded to always fair, 26% agreed upon usually fair 2% good and 3% students responded poor.

Interpretation- 69% students responded to always fair, 26% agreed upon usually fair 2% good and 3% students responded poor that fairness of the internal evaluation process by the teacher is honest and impartial.

5. For question 5- 67% students responded to every time performance of assignment discussed with them 26% agreed to usually, 3% responded to occasionally and 3% responded to never.

Interpretation- 67% students responded to every time performance of assignment discussed with them 26% agreed to usually, 3% responded to occasionally and 3% responded to never that students' performance in assignment is discussed with them.

6. For question 6- 39% students responded to significantly, 52% agreed to very well, 7% responded to moderately and 2% responded to not at all.

Interpretation- 39% students responded to significantly, 52% agreed to very well, 7% responded to moderately and 2% responded to not at all that the teaching and mentoring process in the Institution facilitates students in cognitive, social and emotional growth.

7. For question 7- 44% students strongly agreed, 44% agreed, 5% neutral, 3% disagreed and 3% strongly disagreed about provision of Institutions opportunities to learn and grow.

Interpretation- From the above graph, it is interpreted that 44% students strongly agreed that Institution provided multiple opportunities to learn and grow, 44% students agreed, 5% neutral, 3% disagreed and 3% strongly disagreed.

8. For question 8- 61% students strongly agreed on every time, 34% agreed upon usually, 2% occasionally, 2% rarely and 1% never.

Interpretation- In the above graph, it is interpreted that only 61% students strongly agreed, 34% students agreed that teachers inform them about expected competencies, course outcomes and programme outcomes.

9. For question 9- 67% students responded every time, 26% responded usually and 3% responded occasionally, 2% responded rarely and 1% responded never.

Interpretation- In the above graph, it is interpreted that 67% students agreed that teachers are able to identify students' weakness and help them to overcome them, 26% responded to usually.

10. For question 10- 46% students strongly agreed, 48% agreed, 3% were neutral, 2% disagreed and 1% strongly disagreed.

Interpretation- 46% students strongly agreed, 48% agreed, 3% were neutral, 2% disagreed and 1% strongly disagreed that the Institution makes efforts to engage students in the monitoring, review and continuous quality improvement of the teaching learning process.

11. For question 11- 66% students responded to a great extent, 25% to moderate, 5% to somewhat and 4% to not at all.

Interpretation- 66% students responded to a great extent, 25% to moderate, 5% to somewhat and 4% to not at all that somewhat about teachers use student centric methods such as experiential learning, participative learning and problem-solving methodologies for enhancing learning experiences.

12. For question 12- 64% students strongly agreed, 33% agreed and 3% were neutral.

Interpretation- Students strongly agreed, 33% agreed and 3% were neutral that teachers encourage them to participate in extra-curricular activities.

13. For question 13- 72% students strongly agreed, 23% agreed, 2% were neutral and 3% strongly disagreed.

Interpretation- 72% students strongly agreed, 23% agreed, 2% were neutral and 3% strongly disagreed that efforts were taken by teachers to inculcate soft skills and employability skills to make them ready for the world of work.

14. For question 14- 46% students responded to more than 90%, 31% agreed to 70% to 89%, 10% responded to 50 to 69%, 7% responded to 30 to 49% and 6% responded to below 29%.

Interpretation- 46% students responded to more than 90%, 31% agreed to 70% to 89%, 10% responded to 50 to 69%, 7% responded to 30 to 49% and 6% responded to below 29% teachers use ICT tools.

15. For question 15- 47% students strongly agreed, 46% agreed, 5% were neutral and 1% strongly disagreed.

Interpretation: - 47% students strongly agreed, 46% agreed, 5% neutral and 1% strongly disagreed to the overall quality of teaching-learning process in the college is very good.

Bachelor of Arts

Analysis

Learners have given their responses on a 5 -point Likert Scale. The mode of collection was survey form.

Option 4: 2.444

Option 3: 1.650

Option 2: 0.444

Option 1: 0.214

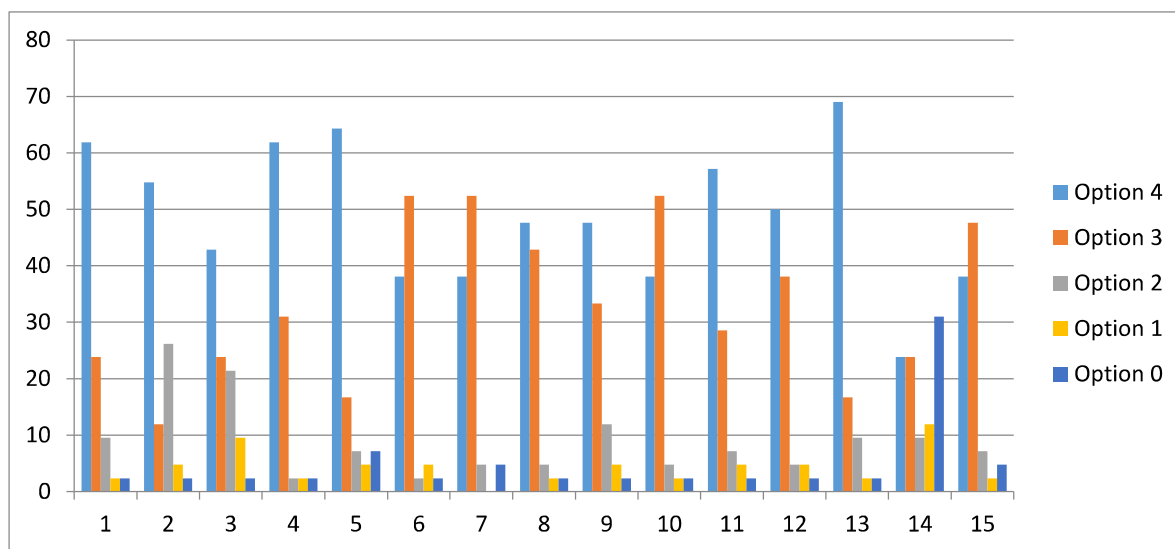
Option 0: 0.246

Remarks & Suggestions by Students

One of the Questions which was as given, 'What percentage of teachers use ICT tools such as LCD projector, multi-media, etc. while teaching' to which the elicited response on the Likert scale was 31% which suggests an introspection in this regard needs to be done.

Action Taken on the Remarks and Suggestions

As mentioned above, the Institution through its Feedback on Teachers by Students has analyzed and has taken cognizance of the remarks. The Institution encouraged the faculty to get themselves thoroughly acquainted with ICT enabled Tools and Internal Quality Assurance Cell organized a Workshop Titled, 'All about Google Tools'.



On X-axis – Question number

On Y-axis- Response in %

- 1. For question 1 – 62% students responded to 85 to 100%, 24% responded to 70 to 84%, 9% responded to 55 to 69%, 2% responded to 30 to 54% and 5% responded to below 30%.**

Interpretation- 62% students responded that 85 to 100% syllabus was covered in the class, 24% responded 70 to 84%, 9% responded 55 to 69%, 2% responded 30 to 54% and 5% responded to below 30% that syllabus was covered in the class.

2. For question 2- 55% students responded to always effective, 26% responded to sometimes effective, 26% responded to satisfactorily, 5% responded to generally ineffective and 2% responded to very poor in communication.

Interpretation- 55% students responded that teachers were always able to communicate, 26% responded to satisfactorily, 5% responded to generally ineffective and 2% responded to very poor in communication.

3. For question 3- 43% students responded excellent, 24% responded very good, 21% good, 9% responded fair and 2% students responded to poor.

Interpretation- 43% students responded excellent, 24% responded very good, 21% good, 9% responded fair and 2% students responded to poor for the teachers approach to teaching.

4. For question 4- 62% students responded to always fair, 31% agreed upon usually fair, 2% agreed to sometimes unfair, 2% agreed to usually unfair and 2% agreed to unfair.

Interpretation- 62% students responded to always fair, 31% agreed upon usually fair, 2% agreed to sometimes unfair, 2% agreed to usually unfair and 2% agreed to unfair that fairness of the internal evaluation process by the teacher was honest and impartial.

5. For question 5- 64% students responded to every time, 32 % agreed to usually, 7% responded occasionally, 5% responded to rarely and 7% responded to never.

Interpretation- 64% students responded to every time, 32 % agreed to usually, 7% responded occasionally, 5% responded to rarely and 7% responded to never that students' performance in assignment is discuss with them.

6. For question 6- 38% students responded to significantly, 52% agreed to very well, 2% agreed to moderately, 5% agreed to marginally and 2% responded to not at all.

Interpretation- 38% students responded to significantly, 52% agreed to very well, 2% agreed to moderately, 5% agreed to marginally and 2% responded to not at all that the teaching and mentoring process in college facilitates students in cognitive, social and emotional growth.

7. For question 7- 38% students strongly agreed, 52% agreed, 4% neutral and 5% strongly disagreed.

Interpretation- From the above it is interpreted that 38% students strongly agreed that institution provided multiple opportunities to learn and grow, 52% agreed, 4% neutral and 5% strongly disagreed.

8. For question 8- 48% students strongly agreed on every time, 43% agreed upon usually, 5% occasionally, 2% rarely and 2% to never.

Interpretation- In the above graph, it is interpreted that 48% students strongly agreed, 43% agreed upon usually, 5% occasionally, 2% rarely and 2% to never that teachers informed them about expected competencies, course outcomes and programme outcomes.

9. For question 9- 48% students strongly agreed on every time, 33% agreed upon usually, 12% occasionally, 5% rarely and 2% to never.

Interpretation- The above graph it is interpreted that 48% students strongly agreed that teachers are able to identify students' weakness and help them to overcome them every time, 33% responded to usually, 12% responded occasionally, 5% rarely and 2% to never.

10. For question 10- 38% students strongly agreed, 52% agreed, 5% neutral, 2% Disagreed and 2% strongly disagreed.

Interpretation- 38% students strongly agreed, 52% agreed, 5% neutral, 2% Disageded and 2% strongly disagreed that the Institution makes efforts to engage students in the monitoring, review and continuous quality improvement of the teaching-learning process.

11. For question 11- 57% responded to a great extent, 28% responded to moderate, 7% responded to somewhat, 5% responded to very little and 2% responded to not at all.

Interpretation- 57% responded to a great extent, 28% responded to moderate, 7% responded to somewhat, 5% responded to very little and 2% responded to not at all that teachers used student-centric methods such as experiential learning, participative learning and problem -solving methodologies for enhancing learning experiences.

12. For question 12- 50% students strongly agreed, 38% agreed, 5% neutral, 5% Disagreed and 2% strongly disagreed.

Interpretation- 50% students strongly agreed, 38% agreed, 5% neutral, 5% Disagreed and 2% strongly disagreed that teachers encouraged them to participate in extra-curricular activities.

13. For question 13- 69% students responded to a great extent, 17% moderate, 7% responded to somewhat, 5% responded to very little and 2% responded to not at all.

Interpretation- 69% students responded to a great extent, 17% moderate, 7% responded to somewhat, 5% responded to very little and 2% responded to not at all that efforts taken by teachers to inculcate soft skills and employability skills to make them ready for the world of work.

14. For question 14- 24% students responded to above 90%, 24% agreed to 70% to 89%, 9% responded to 50 to 69 %, 12% responded to 30% to 49 % and 31% to less than 29%.

Interpretation- 24% students responded to above 90%, 24% agreed to 70% to 89%, 9% responded to 50 to 69 %, 12% responded to 30% to 49 % and 31% to less than 29% that teachers used ICT tools.

15. For question 15- 38% students strongly agreed, 48% agreed, 7% neutral, 2% Disagreed and 5% strongly disagreed.

Interpretation- 38% students strongly agreed, 48% agreed, 7% neutral, 2% Disagreed and 5% strongly disagreed that the overall quality of teaching-learning process in the College is very good.

Bachelor of Commerce

Analysis

Learners have given their responses on a 5 -point Likert Scale. The mode of collection was survey form.

Option 4: 2.740

Option 3: 1.711

Option 2: 0.327

Option 1: 0.107

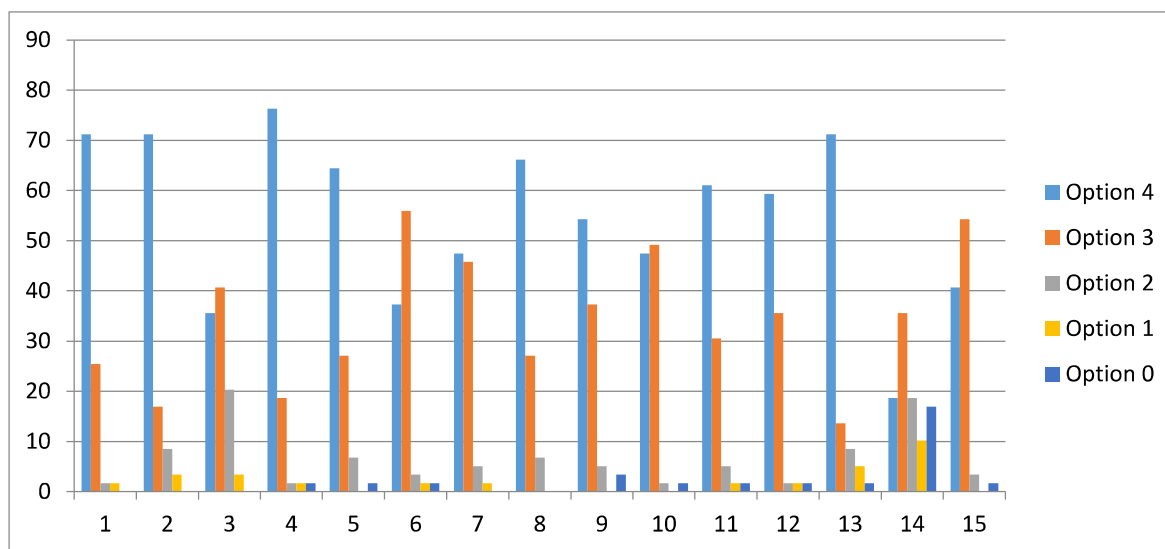
Option 0: 0.112

Remarks & Suggestions by Students

One of the Questions which was as given, 'What percentage of teachers use ICT tools such as LCD projector, multi-media, etc. while teaching' to which the elicited response on the Likert scale was 17% which suggests an introspection in this regard needs to be done.

Action Taken on the Remarks and Suggestions

As mentioned above, the Institution through its Feedback on Teachers by Students has analyzed and has taken cognizance of the remarks. The Institution encouraged the faculty to get themselves thoroughly acquainted with ICT enabled Tools and Internal Quality Assurance Cell organized a Workshop Titled. 'All about Google Tools'.



On X-axis – Question number

On Y-axis- Response in %

1. **For question 1 – 71% students responded to 85 to 100%, 25% responded to 70 to 84%, 2% responded to 55 to 69% and 2% responded to 30 to 54%.**

Interpretation- 71% responded that 85% to 100 % syllabus was covered in the class, 25% students responded that 70% to 84% covered, 2% responded that 55 to 69% covered and 2% responded that 30 to 54% syllabus was covered in the class.

2. For question 2- 71% students responded to always effective to communicate, 17% responded to sometimes effective, 8% responded to satisfactorily effective and 3% responded to generally ineffective.

Interpretation- 72% students responded that teachers were always able to effectively communicate, 17% responded that they were sometimes effective to communicate, 8% responded satisfactorily effective and 3% responded generally ineffective to communicate with students.

3. For question 3- 36% students responded excellent, 41% responded very good, 20% good and 3% responded fair.

Interpretation- 36% students responded excellent, 41% responded very good, 20% good and 3% responded fair for the teachers approach for teaching.

4. For question 4- 76% students responded to always fair, 19% agreed upon usually fair, 2% responded to sometimes unfair, 2% responded to usually unfair and 1% students responded to unfair.

Interpretation- 76% students responded to always fair, 19% agreed upon usually fair, 2% responded to sometimes unfair, 2% responded to usually unfair and 1% students responded to unfair that fairness of the internal evaluation process by the teacher is always honest and impartial.

5. For question 5- 64% students responded to every time, 27% agreed to usually, 7% responded to occasionally and 2% responded to never.

Interpretation- 64% students responded to every time, 27% agreed to usually, 7% responded to occasionally and 2% responded to never that students' performance in assignment is usually discussed with them.

6. For question 6- 37% students responded to significantly, 56% agreed to very well, 3% students responded to moderately, 2% students responded to marginally and 2% students responded to not at all.

Interpretation- 37% students responded to significantly, 56% agreed to very well, 3% students responded to moderately, 2% students responded to marginally and 2% students responded to not at all that the teaching and mentoring process in college facilitates students in cognitive, social and emotional growth.

7. For question 7- 47% students strongly agreed, 46% agreed, 5% were neutral and 2% disagreed.

Interpretation- From the above graph, it is interpreted that 47% students strongly agreed, 46% agreed, 5% neither agreed nor disagreed and 2% disagreed that Institution provided multiple opportunities to learn and grow.

8. For question 8- 66% students responded to every time, 27% agreed upon usually and 5% occasionally.

Interpretation- In the above graph, it is interpreted that 66% students strongly agreed and 27% students agreed that teachers informed them about expected competencies, course outcomes and programme outcomes.

9. For question 9- 54% students strongly agreed on every time, 37% agreed upon usually, 5% occasionally and 3% responded to never.

Interpretation- In the above graph, it is interpreted that 54% students strongly agreed that teachers are able to identify student's weakness and help them to overcome their issues, 37% respond to usually and 3% responded to occasionally.

10. For question 10- 47% students strongly agreed, 49% agreed, 2% responded to neutral and 2% students strongly disagreed.

Interpretation- 47% students strongly agreed, 49% agreed, 2% responded to neutral and 2% students strongly disagreed that the institution makes efforts to engage students in the monitoring, review and continuous quality improvement of the teaching learning process.

11. For question 11- 61% students responded to a great extent, 31% responded to moderate, 5% responded to somewhat moderate, 2% responded to very little and 1% responded to not at all.

Interpretation- 61% students responded that teachers use student centric methods such as experiential learning, participative learning and problem- solving methodologies for enhancing learning experiences to a great extent, while 31% responded to moderate, 5% responded to somewhat moderate, 2% responded to very little and 1% responded to not at all.

12. For question 12- 59% students strongly agreed, 36% agreed, 2% were neutral, 2% disagreed and 1% strongly disagreed.

Interpretation- 59% students strongly agreed, 36% agreed, 2% were neutral, 2% disagreed and 1% strongly disagreed that teachers encourage them to participate in extra-curricular activities.

13. For question 13- 71% students responded to a great extent, 14% responded to moderate, 8% responded to somewhat moderate, 5% responded to very little and 2% responded to not at all.

Interpretation- 71% students responded to a great extent, 14% responded to moderate, 8% responded to somewhat moderate, 5% responded to very little and 2%

responded to not at all that efforts taken by teachers to inculcate soft skills and employability skills to make them ready for the world of work.

14. For question 14- 19% students responded to more than 90%, 36% agreed to 70% to 89%, 19% responded to 50% to 69%, 10% responded to 30% to 49 % and 17% to less than 29%.

Interpretation- 19% students responded to more than 90%, 36% agreed to 70% to 89%, 19% responded to 50% to 69%, 10% responded to 30% to 49 % and 17% to less than 29% that teachers use ICT tools.

15. For question 15- 41% students strongly agreed, 54% agreed, 3% neither agreed nor disagreed and 2% strongly disagreed.

Interpretation- 41% students strongly agreed, 54% agreed, 3% neither agreed nor disagreed and 2% strongly disagreed that the overall quality of teaching-learning process in the College is very good.

Bachelor of Vocation

Analysis

Learners have given their responses on a 5 -point Likert Scale. The mode of collection was survey form.

Option 4: 1.790

Option 3: 1.723

Option 2: 0.990

Option 1: 0.304

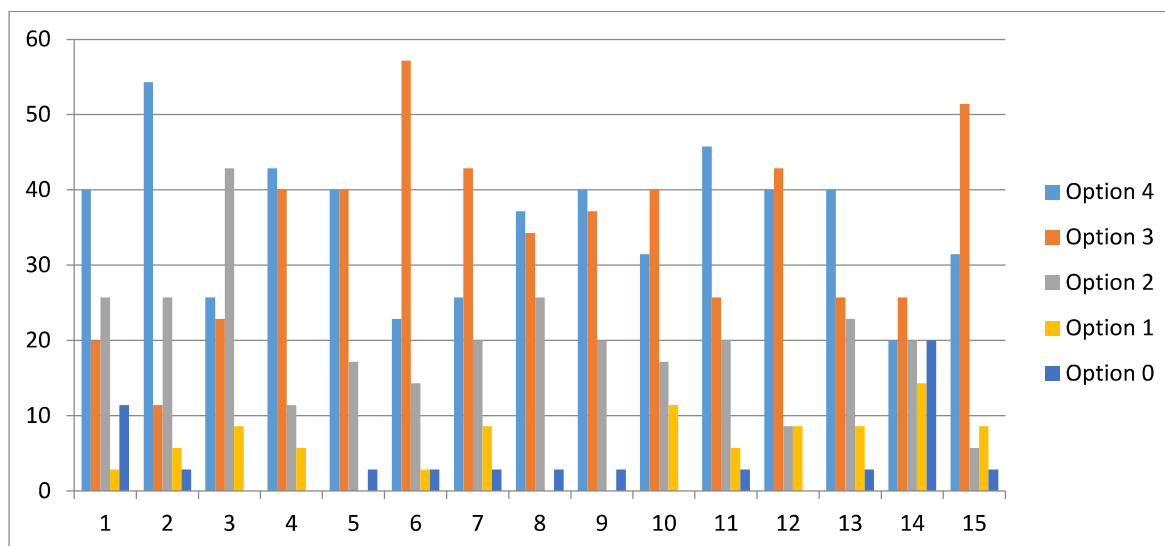
Option 0: 0.190

Remarks & Suggestions by Students

One of the Questions which was as given, 'What percentage of teachers use ICT tools such as LCD projector, multi-media, etc. while teaching' to which the elicited response on the Likert scale was 20% which suggests an introspection in this regard needs to be done.

Action Taken on the Remarks and Suggestions

As mentioned above, the Institution through its Feedback on Teachers by Students has analyzed and has taken cognizance of the remarks. The Institution encouraged the faculty to get themselves thoroughly acquainted with ICT enabled Tools and Internal Quality Assurance Cell organized a Workshop Titled, 'All about Google Tools'.



On X-axis – Question number

On Y-axis- Response in %

1. For question 1 – 40% students responded to 85 to 100%, 20% responded to 70 to 84%, 26% responded to 55 to 69%, 3% % responded to 30 to 54% and 11% responded to below 30%.

Interpretation- 40% students responded to 85 to 100%, 20% responded to 70 to 84%, 26% responded to 55 to 69%, 3% responded to 30 to 54% and 11% responded to below 30% syllabus was covered in the class.

2. For question 2- 54% students responded that teachers were always effective to communicate, 11% responded to sometimes effective, 26% responded to satisfactorily, 6% responded to generally ineffective and 3% responded to very poor in communication.

Interpretation- 54% students responded that teachers were always effective to communicate, 11% responded to sometimes effective, 26% responded to satisfactorily, 6% responded to generally ineffective and 3% responded to very poor in communication that teachers were sometimes effectively able to communicate to those teachers were ineffective to communicate.

3. For question 3- 26% students responded excellent, 23% very good, 43% good and 9% fair.

Interpretation- 26% students responded excellent, 23% very good, 43% good and 9% fair for the teachers approach to teaching.

4. For question 4- 43% students responded to always fair, 40% to usually fair, 11% to sometimes unfair and 6% to usually unfair for the evaluation process by teachers.

Interpretation- 43% students responded to always fair, 40% to usually fair, 11% to sometimes unfair and 6% to usually unfair for the evaluation process by teachers that fairness of the internal evaluation process by the teacher is always honest and impartial.

5. For question 5- 40% students responded to every time, 40% agreed to usually, 17% to occasionally and 3% to never.

Interpretation- 40% students responded to every time, 40% agreed to usually, 17% to occasionally and 3% to never that students' performance in assignment is usually discussed with them.

6. For question 6- 23% students responded to significantly, 57% to very well, 14% responded to moderately, 3% to marginally and 3% to not at all.

Interpretation- 23% students responded to significantly, 57% to very well, 14% responded to moderately, 3% to marginally and 3% to not at all that the teaching and mentoring process in college facilitates students in cognitive, social and emotional growth.

7. For question 7- 26% students strongly agreed, 43% agreed, 20% were neutral, 9% disagreed and 3% strongly disagreed.

Interpretation- 26% students strongly agreed, 43% agreed, 20% were neutral, 9% disagreed and 3% strongly disagreed that Institution provided multiple opportunities to learn and grow, 33% agreed.

8. For question 8- 37% students responded to every time, 34% to usually, 26% to occasionally and 3% to responded to never.

Interpretation- 37% students responded to every time, 34% to usually, 26% to occasionally and 3% to responded to never that teachers informed them about expected competencies, course outcomes and programme outcomes.

9. For question 9- 40% students strongly agreed, 37% agreed, 20% were neutral and 3% strongly disagreed.

Interpretation- In the above graph, it is interpreted that 40% students strongly agreed, 37% agreed, 20% were neutral and 3% strongly disagreed that teachers are able to identify student's weakness and help them to overcome their issues.

10. For question 10- 31% students strongly agreed, 40% agreed, 17% were neutral and 11% disagreed.

Interpretation- 31% students strongly agreed, 40% agreed, 17% were neutral and 11% disagreed that the institution makes efforts to engage students in the monitoring, review and continuous quality improvement of the teaching learning process.

11. For question 11- 46% students responded to a great extent, 26% to moderate, 20% to somewhat and 6% to very little and 3% to not at all.

Interpretation- 46% students responded to a great extent, 26% to moderate, 20% to somewhat and 6% to very little and 3% to not at all that teachers use student centric methods such as experiential learning, participative learning and problem- solving methodologies for enhancing learning experiences.

12. For question 12- 40% students strongly agreed, 43% agreed, 9% were neutral and 8% disagreed.

Interpretation- 40% students strongly agreed, 43% agreed, 9% were neutral and 8% disagreed that teachers encourage them to participate in extra-curricular activities.

13. For question 13- 40% students responded to a great extent, 26% responded to moderate, 23% to somewhat, 8% to very little and 3% to not at all.

Interpretation- 40% students responded to a great extent, 26% to moderate, 23% to somewhat, 8% to very little and 3% to not at all that efforts taken by teachers to inculcate soft skills and employability skills to make them ready for the world of work.

14. For question 14- 20% students responded to more than 90%, 26% agreed to 70% to 89%, 20% responded to 50% to 69%, 14% to 30-49% and 20% to below 29%.

Interpretation- 20% students responded to more than 90%, 26% agreed to 70% to 89%, 20% responded to 50% to 69%, 14% to 30-49% and 20% to below 29% that teachers use ICT tools.

15. For question 15- 31% students strongly agreed, 51% agreed, 6% were neutral, 9% disagreed and 3% strongly disagreed.

Interpretation- 31% students strongly agreed, 51% agreed, 6% were neutral, 9% disagreed and 3% strongly disagreed that the overall quality of teaching-learning process in the College is very good.

Appendix – Student Satisfaction Survey Sample Form

Bhiwapur Mahavidyalaya

भिवापूर महाविद्यालय भिवापूर

सत्र: 2022-23

विद्यार्थी समाधान सर्वेक्षण

(Institutional Student Satisfaction Survey / Exit Feedback)

1. Name of the Student-

.....

2. Age - Gender - Female Male Transgender

3. What Programme are you pursuing now?

a) Bachelor's b) Master's

4. What subject are you currently pursuing?

a) Arts b) Commerce c) Science d) Professional e) Other

Note - Please tick the responses you think are true to the best of your knowledge.

1. How much of the syllabus was covered in the class?

वर्गात कीती टक्के अभ्यासक्रम पूर्ण करण्यात येतो.

4 – 85 ते 100%

3 – 70 ते 84%

2 – 55 ते 69%

1 – 30 ते 54%

0 – Below 30%

2. How well were the teachers able to communicate?

शिक्षकांची वर्गातील संवादाची शैली कशी आहे

4 – नेहमीच परिणामकारक

3 – कधी कधी परिणामकारक

2 – फक्त परिणामकारक

1 – साधारणतः अपरिणामकारक

0 – फार वाईट संवादशैली

3. The teachers's approach to teaching can be best described as-

शिक्षकांचा वर्गात शिकविण्याबाबतचा दृष्टिकोन कसा आहे.

4 – अति उत्तम

3 – फार चांगला

2 – चांगला

1 – ठीक

0 – वाईट

4. Fairness of the internal evaluation process by the teachers.

अंतर्गत मुल्यांकनाबाबत शिक्षकांचा प्रमाणिकपणा.

4 – नेहमीच प्रामाणीक

3 – साधारणतः प्रामाणीक

2 – कधी कधी अप्रामाणीक

1 – साधारणतः अप्रामाणीक

0— अप्रामाणीक

5. Was your performance in assignments discussed with you?

आपण सादर केलेल्या स्वाध्यायासदरर्भात आपणांशी शिक्षक चर्चा करतात काय.

- 4 – प्रत्येक वेळी
- 3 – सदैव
- 2 – प्रासंगिक / कधी—कधी
- 1 – अपवादात्मक
- 0 – कधीच नाही

6. The teaching and mentoring process in your Institution facilitates you in cognitive, social and emotional growth.

महाविद्यालयातील शिक्षण आणि मार्गदर्शन प्रक्रिया आपणांस सामाजिक आणि भावनीक विकासासाठी सहाय्यक आहेत काय.

- 4 – Significantly
- 3 – Very well
- 2 – Moderately
- 1 – Marginally
- 0 – Not at all

7. The Institution provides multiple opportunities to learn and grow.

महाविद्यालयामार्फत शिक्षणासोबतच, आपणांस सर्वांगीन विकासाच्या अनेक संधी उपलब्ध करून दिल्या जातात

- 4 – पुर्णपणे सहमत
- 3 – सहमत
- 2 – ना सहमत ना असहमत
- 1 – असहमत
- 0 – पुर्णपणे असहमत

8. Teachers inform you about your expected competencies, course outcomes and programme outcomes.

आपल्यातील अपेक्षित क्षमता, अभ्यासक्रम आणि अभ्यासक्रमातुन होणारी फलनिष्पत्ती ह्या संदर्भात आपल्याला सुचना करतात काय.

- 4 – प्रत्येक वेळी
- 3 – सदैव
- 2 – प्रासंगिक / कधी—कधी
- 1 – अपवादात्मक
- 0 – कधीच नाही

9. Teachers are able to identify your weaknesses and help you to overcome them.

शिक्षक आपल्यातील कमतरता समजावून घेऊन त्या दूर करण्यासंदर्भात आपली मदत करतात.

- 4 – प्रत्येक वेळी
- 3 – सदैव
- 2 – प्रासंगिक / कधी—कधी
- 1 – अपवादात्मक
- 0 – कधीच नाही

10. The Institution makes effort to engage students in the monitoring, review and continuous quality improvement of the teaching learning process.

विद्यार्थ्यांना देखरेख, पुनरावलोकन आणि अध्यापनात सतत सुधारणा करण्याच्या प्रक्रियेत संस्था सहभागी करून घेते.

- 4 – पुर्णपणे सहमत
- 3 – सहमत
- 2 – ना सहमत ना असहमत
- 1 – असहमत
- 0 – पुर्णपणे असहमत

11. The Institution/ teachers use student centric methods , such as experiential learning , participative learning and problem solving methodologies for enhancing learning experiences

प्रयोगात्मक, सहभागात्मक शिक्षण आणि समस्या सोडविण्यासारख्या, विद्यार्थी केंद्रित पध्दतींचा उपयोग शिकण्याचा अनुभव उन्नत करण्यामध्ये शिक्षक आणि संस्थेमार्फत केला जातो काय?

- 4 – पूर्ण प्रयत्न करतात
- 3 – पुरेसे प्रयत्न करतात
- 2 – काही प्रमाणात प्रयत्न करतात
- 1 – फार कमी प्रयत्न करतात
- 0 – अजिबात प्रयत्न करीत नाही

12. Teachers encourage you to participate in extracurricular activities.

- शिक्षक आपणांस अभ्यासे-न्तर उपक्रमांमध्ये सहभागी होण्यासाठी प्रोत्साहित करतात.
- 4 – पूर्णपणे सहमत
 - 3 – सहमत
 - 2 – ना सहमत ना असहमत
 - 1 – असहमत
 - 0 – पूर्णपणे असहमत

13. Efforts are made by the Institute /teachers to inculcate soft skills, life skills and employability skills to make you ready for the world of work.

- तुम्हाला व्यावहारीक जगाचे ज्ञान प्राप्त व्हावे ह्यासाठी सहज कौशल्य, जिवन कौशल्य आणि व्यवहार कौशल्याच्या माध्यमातून संस्था आणि शिक्षक प्रयत्न करतात.
- 4 – पूर्ण प्रयत्न करतात
 - 3 – पुरेसे प्रयत्न करतात
 - 2 – काही प्रमाणात प्रयत्न करतात
 - 1 – फार कमी प्रयत्न करतात
 - 0 – अजिबात प्रयत्न करीत नाही

14. What percentage of teachers use ICT tools such as LCD projector, Multi-media, etc. while teaching.

- शिकवितांना LCD Projector, Multi-media ह्यासारख्या संसाधनांचा वापर कीती टक्के शिक्षक करतात
- 90 टक्क्यांच्या वर
 - 70 ते 89 टक्के
 - 50 ते 69 टक्के
 - 30 ते 49 टक्के
 - 29 क्वा पेक्षा कमी

15. The overall quality of teaching – learning process in your institute is very good.

- आपल्या महाविद्यालयातील अध्यापनाची आणि अध्ययनाची प्रक्रिया एकंदर फार चांगली आहे
- 4 – पूर्णपणे सहमत
 - 3 – सहमत
 - 2 – ना सहमत ना असहमत
 - 1 – असहमत
 - 0 – पूर्णपणे असहमत

Give three observations/ suggestions to improve the overall teaching-learning experience. अध्यापनाची आणि अध्ययनाची प्रक्रिया अधिक सक्षम आणि गुणवत्तापूर्ण करण्यासाठी तिन सुचना आणि निरिक्षणे नोंदवा

1.
2.
3.

Sample Online Form for Student Satisfaction Survey

भिवापूर महाविद्यालय, भिवापूर सत्र: 2022-23 विद्यार्थी समाधान सर्वेक्षण (Institutional Student Satisfaction Survey / Exit Feedback)

Form description

Full Name of the Student *

(विद्यार्थ्यांचे पूर्ण नाव)

Short answer text

Age (वय) *

Short answer text

What Programme are you pursuing now? *

(आता तुम्ही कोणत्या कार्यक्रमाचा पालखुसवा करत आहात?)

Bachelor's

Master's

What faculty do you belong to? *

(तुम्ही सध्या कोणत्या विद्याशाखेत शिकत आहात?)

Arts

Commerce

Science

Professional

Other

Class *

Short answer text

Gender *

- Male
- Female
- Other..

Aadhar Id number/Student Id number *

Short answer text

Mobile Number *

Short answer text

E-mail Id *

Short answer text

How much of the syllabus was covered in the class? *

(बर्गल कीती टक्के अध्यासक्रम पूर्ण करण्यात आले?)

- 4 - 85 to 100% (85 ते 100%)
- 3 - 70 to 84% (70 ते 84%)
- 2 - 55 to 69% (55 ते 69%)
- 1 - 30 to 54% (30 ते 54%)
- 0 - Below 30% (30 % चड खाली)

How well were the teachers able to communicate? *

(शिक्षकांची वर्गातील संवादाची शैली कशी होती?)

- 4 - Always effective (नेहमीच परिणामकारक)
- 3 - Sometimes effective (कधी कधी परिणामकारक)
- 2 - Satisfactorily (परिणामकारक)
- 1 - Generally ineffective (साधारणतः अपरिणामकारक)
- 0 - Very poor in communication (संवादशैलीमध्ये फारच वाईट)

The teacher's approach to teaching can be best * described as-

(शिक्षकांचा वर्गात शिकविण्याबाबतचा दृष्टीकोन या प्रकारे उत्तम वर्णन करता येईल)

- 4 - Excellent (अति उत्तम)
- 3 - Very good (फार चांगला)
- 2 - Good (चांगला)
- 1 - Fair (ठीक)
- 0 - Poor (वाईट)

Fairness of the internal evaluation process by * the teachers.

(अंतर्गत मुल्यांकनाबाबत शिक्षकांचा प्रामाणिकपणा.)

- 4 - Always fair (नेहमीच प्रामाणीक)
- 3 - Usually fair (साधारणतः प्रामाणीक)
- 2 - Sometimes unfair (कधी कधी अप्रामाणीक)
- 1 - Usually unfair (साधारणतः अप्रामाणीक)
- 0 - Unfair (अप्रामाणीक)

Was your performance in assignments discussed with you? *

(आपण सादर केलेल्या स्वाध्यायासंदर्भात आपणांशी चर्चा झाली का?)

- 4 - Every time (प्रत्येक वेळी)
- 3 - Usually (सदैव)
- 2 - Occasionally/Sometimes (प्रासंगिक/कधी-कधी)
- 1 - Rarely (अपवादालाक)
- 0 - Never (कधीच नाही)

The teaching and mentoring process in your institution facilitates you in cognitive, social and emotional growth. *

(महाविद्यालयातील शिक्षण आणि मार्गदर्शन प्रक्रीया आपणांस सामाजिक आणि भावनात्मक विकासासाठी सहाय्यक आहेत.)

- 4 - Significantly (सहसा)
- 3 - Very well (खूप चांगले)
- 2 - Moderately (माफक प्रमाणात)
- 1 - Marginally (किरकोळ)
- 0 - Not at all (अजिबात नाही)

The institution provides multiple opportunities to learn and grow. *

(महाविद्यालयामार्फत शिक्षणासोबतच, आपणांस सर्वांगीण विकासाच्या अनेक संधी उपलब्ध करून दिल्या जातात)

- 4 - Strongly agree (दुर्लभपणे सहमत)
- 3 - Agree (सहमत)
- 2 - Neutral (ना सहमत ना असहमत)
- 1 - Disagree (असहमत)
- 0 - Strongly disagree (दुर्लभपणे असहमत)

Teachers inform you about your Expected Competencies, Course outcomes and Program outcomes. *

(शिक्षक आपल्यातील अपेक्षित क्षमता, अभ्यासक्रम आणि अभ्यासक्रमातुन होणारी फलनिश्चिती ह्या संदर्भात आपल्याला सुचना करतात.)

- 4 - Every time (प्रत्येक वेळी)
- 3 - Usually (सदेन)
- 2 - Occasionally/Sometimes (प्रसंगीक/कधी-कधी)
- 1 - Rarely (अपवादालयक)
- 0 - Never (कधीच नाही)

Teachers are able to identify your weaknesses and help you to overcome them. *

(शिक्षक आपल्यातील कमतरता समजावून घेऊन त्या दूर करण्यासंदर्भात आपली मदत करतात.)

- 4 - Every time (प्रत्येक वेळी)
- 3 - Usually (सदेन)
- 2 - Occasionally/Sometimes (प्रसंगीक/कधी-कधी)
- 1 - Rarely (अपवादालयक)
- 0 - Never (कधीच नाही)

The institution makes effort to engage students in the monitoring, review and continuous quality improvement of the Teaching Learning Process. *

(विद्यार्थ्यांना देखरेख, पुनरावलोकन आणि अध्यापनात सतत सुधारणा करण्याच्या प्रक्रियेत संस्था सहभागी करून घेते.)

- 4 – Strongly agree (पुर्णपणे सहमत)
- 3 – Agree (सहमत)
- 2 – Neutral (ना सहमत ना असहमत)
- 1 – Disagree (असहमत)
- 0 – Strongly disagree (पुर्णपणे असहमत)

The Institution/ teachers use Student Centric Methods , such as Experiential Learning , Participative Learning and Problem Solving Methodologies for enhancing learning experiences. *

(प्रयोगात्मक, सहभागात्मक शिक्षण आणि समस्या सोडविण्यासारख्या, विद्यार्थी केंद्रीत पध्दतींचा उपयोग शिकण्याचा अनुभव उन्नत करण्यामध्ये शिक्षक आणि संस्थेमार्फत केला जातो.)

- 4 – To a great extent (पुर्ण प्रयत्न करतात)
- 3 – Moderate (पुरेसे प्रयत्न करतात)
- 2 – Some what (काही प्रमाणात प्रयत्न करतात)
- 1 – Very little (फार कमी प्रयत्न करतात)
- 0 – Not at all (अजिबात प्रयत्न करीत नाही)

Teachers encourage you to participate in Extracurricular Activities. *

(शिक्षक आपणांस अभ्यासेतर उपक्रमांमध्ये सहभागी होण्यासाठी प्रोत्साहित करतात.)

- 4 - Strongly agree (पुर्णपणे सहमत)
- 3 - Agree (सहमत)
- 2 - Neutral (ना सहमत ना असहमत)
- 1 - Disagree (असहमत)
- 0 - Strongly disagree (पुर्णपणे असहमत)

Efforts are made by the Institute /teachers to inculcate soft skills, life skills and employability skills to make you ready for the world of work. *

(तुम्हाला व्यावहारिक जगाचे ज्ञान प्राप्त व्हावे ह्यासाठी सहज कौशल्य, जिवन कौशल्य आणि व्यवहार कौशल्याच्या माध्यमातून संस्था आणि शिक्षक प्रयत्न करतात.)

- 4 - To a great extent (पुर्ण प्रयत्न करतात)
- 3 - Moderate (पुरेसे प्रयत्न करतात)
- 2 - Some what (काही प्रमाणात प्रयत्न करतात)
- 1 - Very little (फार कमी प्रयत्न करतात)
- 0 - Not at all (अजिबात प्रयत्न करीत नाही)

What percentage of teachers use ICT tools such as LCD Projector, Multimedia, etc. while teaching. *

(शिकवितांना LCD, Projector, Multimedia ह्यासारख्या संसाधनांचा वापर कीती टक्के शिक्षक करतात.)

- 4 - Above 90% (90 टक्क्यांच्या वर)
- 3 - 70 - 89% (70 ते 89 टक्के)
- 2 - 50 - 69% (50 ते 69 टक्के)
- 1 - 30 - 49% (30 ते 49 टक्के)
- 0 - Below 29% (29 टक्का पैसा कमी)

The overall quality of Teaching – Learning Process in your Institute is very good. *

(आयल्या महाविद्यालयातील अध्यापनाची आणि अध्ययनाची प्रक्रिया एकंदर फार चांगली आहे.)

B *I* U ☺ ☹

- 4 – Strongly agree (पूर्णपणे सहमत)
- 3 – Agree (सहमत)
- 2 – Neutral (ना सहमत ना असहमत)
- 1 – Disagree (असहमत)
- 0 – Strongly disagree (पूर्णपणे असहमत)

Give three observation/ suggestions to improve the overall Teaching – Learning experience.

(अध्यापनाची आणि अध्ययनाची प्रक्रिया अधिक सक्षम आणि गुणवत्तापूर्ण करण्यासाठी तिन सुचना आणि निरीक्षणे नोंदवा.)

Long answer text

Sample Online form submitted by student

Responses cannot be edited

भिवापूर महाविद्यालय, भिवापूर सत्र: 2022-23 विद्यार्थी
समाधान सर्वेक्षण (Institutional
Student Satisfaction Survey / Exit Feedback)

* Indicates required question

Full Name of the Student *

(विद्यार्थ्याचे पूर्ण नाव)

Abefaj Afroz Khan Pathan

Age (वय) *

22

What Programme are you pursuing now? *

(आता तुम्ही कोणत्या कार्यक्रमाचा पाठपुरावा करत आहात?)

Bachelor's

Master's

What faculty do you belong to? *

(तुम्ही सध्या कोणत्या विद्याशाखेत शिकत आहात?)

Arts

Commerce

Science

Professional

Other

Class *

BSC 3rd Year

Gender *

Male

Female

Other: _____

Aadhar Id number/Student Id number *

666706052273

Mobile Number *

7218786177

E-mail Id *

ahfajpathan1216@gmail.com

How much of the syllabus was covered in the class? *

(बर्गात कीती टक्के अभ्यासक्रम पूर्ण करण्यात आले?)

4 – 85 to 100% (85 ते 100%)

3 – 70 to 84% (70 ते 84%)

2 – 55 to 69% (55 ते 69%)

1 – 30 to 54% (30 ते 54%)

0 – Below 30% (30 % या खाली)

How well were the teachers able to communicate? *

(शिक्षकांची वर्गातील संवाददाची शैली कशी होती?)

- 4 – Always effective (नेहमीच परिणामकारक)
- 3 – Sometimes effective (कधी कधी परिणामकारक)
- 2 – Satisfactorily (परिणामकारक)
- 1 – Generally ineffective (साधारणतः अपरिणामकारक)
- 0 – Very poor in communication (संवादशैलीमध्ये खरेच वाईट)

The teacher's approach to teaching can be best described as- *

(शिक्षकांचा वर्गात शिकविण्याबाबतचा दृष्टीकोन या प्रकारे उत्तम वर्णन करता येईल)

- 4 – Excellent (अति उत्तम)
- 3 – Very good (फार चांगला)
- 2 – Good (चांगला)
- 1 – Fair (ठीक)
- 0 – Poor (वाईट)

Fairness of the internal evaluation process by the teachers. *

(अंतर्गत मूल्यांकनाबाबत शिक्षकांचा प्रामाणिकपणा.)

- 4 – Always fair (नेहमीच प्रामाणिक)
- 3 – Usually fair (साधारणतः प्रामाणिक)
- 2 – Sometimes unfair (कधी कधी अप्रामाणिक)
- 1 – Usually unfair (साधारणतः अप्रामाणिक)
- 0 – Unfair (अप्रामाणिक)

Was your performance in assignments discussed with you? *

(आपण सादर केलेल्या स्वाध्यायासंदर्भात आपणांशी चर्चा झाली का?)

- 4 – Every time (प्रत्येक वेळी)
- 3 – Usually (सदैम)
- 2 – Occasionally/Sometimes (आवृत्त/कधी-कधी)
- 1 – Rarely (आवृत्ताने)
- 0 – Never (कधीपनाही)

The teaching and mentoring process in your institution facilitates you in cognitive, social and emotional growth. *

(महाविद्यालयातील शिक्षण आणि मार्गदर्शन प्रक्रीया आपणांस सामाजिक आणि भावनात्मक विकासासाठी सहाय्यक आहेत.)

- 4 – Significantly (लक्षणीय)
- 3 – Very well (बहुप चांगले)
- 2 – Moderately (माध्यम प्रमाणात)
- 1 – Marginally (किरकोळ)
- 0 – Not at all (अजिबात नाही)

The institution provides multiple opportunities to learn and grow. *

(महाविद्यालयामार्फत शिक्षणासोबतच, आपणांस सर्वांगीन विकासाच्या अनेक संधी उपलब्ध करून दिल्या जातात)

- 4 – Strongly agree (पुर्णपणे सहमत)
- 3 – Agree (सहमत)
- 2 – Neutral (ना सहमत ना असहमत)
- 1 – Disagree (असहमत)
- 0 – Strongly disagree (पुर्णपणे असहमत)

Teachers inform you about your Expected Competencies, Course outcomes and Program outcomes. *

(शिक्षक आपल्यातील अपेक्षित क्षमता, अभ्यासक्रम आणि अभ्यासक्रमानुसार होणारी फलनिष्पत्ती हातूंत संदर्भात आपल्याला सुचना करतात.)

- 4 – Every time (प्रत्येक वेळी)
- 3 – Usually (सदैम)
- 2 – Occasionally/Sometimes (प्रसंगीक/काही-काही)
- 1 – Rarely (अपवादालाक)
- 0 – Never (काधीच नाही)

Teachers are able to identify your weaknesses and help you to overcome them. *

(शिक्षक आपल्यातील कमतरता समजावून घेऊन त्या दूर करण्यासंदर्भात आपली मदत करतात.)

- 4 – Every time (प्रत्येक वेळी)
- 3 – Usually (सदैम)
- 2 – Occasionally/Sometimes (प्रसंगीक/काही-काही)
- 1 – Rarely (अपवादालाक)
- 0 – Never (काधीच नाही)

The institution makes effort to engage students in the monitoring, review and continuous quality improvement of the Teaching Learning Process. *

(शिक्षार्थ्यांना देखरेख, पुनरावलोकन आणि अभ्यापनात स्वतः सुधारणा करण्याच्या प्रक्रियेत संस्था सहभागी करून घेते.)

- 4 – Strongly agree (पूर्णपणे सहमत)
- 3 – Agree (सहमत)
- 2 – Neutral (ना सहमत ना असहमत)
- 1 – Disagree (असहमत)
- 0 – Strongly disagree (पूर्णपणे असहमत)

The Institution/ teachers use Student Centric Methods , such as Experiential Learning , Participative *
Learning and Problem Solving Methodologies for enhancing learning experiences.

(प्रयोगात्मक, सहभाग्यात्मक शिक्षण आणि समस्या सोडविण्यासारख्या, विद्यार्थी केंद्रीत पध्दतींचा उपयोग शिकण्याचा अनुभव
उजळ करण्यामध्ये शिक्षक आणि संस्थेमार्फत केला जातो.)

- 4 – To a great extent (पुर्ण प्रयत्न करतात)
- 3 – Moderate (पुरेसे प्रयत्न करतात)
- 2 – Some what (काही प्रमाणात प्रयत्न करतात)
- 1 – Very little (फार कमी प्रयत्न करतात)
- 0 – Not at all (अजिबात प्रयत्न करीत नाही)

Teachers encourage you to participate in Extracurricular Activities. *

(शिक्षक आपणांस अभ्यासेतर उपक्रमांमध्ये सहभागी होण्यासाठी प्रोत्साहित करतात.)

- 4 – Strongly agree (पुर्णपणे सहमत)
- 3 – Agree (सहमत)
- 2 – Neutral (ना सहमत ना असहमत)
- 1 – Disagree (असहमत)
- 0 – Strongly disagree (पुर्णपणे असहमत)

Efforts are made by the institute /teachers to inculcate soft skills, life skills and employability skills *
to make you ready for the world of work.

(तुम्हाला व्यावहारिक जगाचे ज्ञान प्राप्त व्हावे ह्यासाठी सहज कौशल्य, जिवन कौशल्य आणि व्यवहार कौशल्याच्या माध्यमातून
संस्था आणि शिक्षक प्रयत्न करतात.)

- 4 – To a great extent (पुर्ण प्रयत्न करतात)
- 3 – Moderate (पुरेसे प्रयत्न करतात)
- 2 – Some what (काही प्रमाणात प्रयत्न करतात)
- 1 – Very little (फार कमी प्रयत्न करतात)
- 0 – Not at all (अजिबात प्रयत्न करीत नाही)

What percentage of teachers use ICT tools such as LCD Projector, Multimedia, etc. while teaching. *
(शिक्षिताना LCD, Projector, Multimedia द्वारासखया संसाधनांचा वापर कीती टक्के शिक्षक करतात.)

- 4 – Above 90% (90 टक्क्यांच्या वर)
- 3 – 70 – 89% (70 ते 89 टक्के)
- 2 – 50 – 69% (50 ते 69 टक्के)
- 1 – 30 – 49% (30 ते 49 टक्के)
- 0 – Below 29% (29 टक्का वरून कमी)

The overall quality of Teaching – Learning Process in your institute is very good. *
(आपल्या महाविद्यालयातील अध्यापनाची आणि अभ्यासनाची प्रक्रिया एकंदर फार चांगली आहे.)

- 4 – Strongly agree (पूर्णपणे सहमत)
- 3 – Agree (सहमत)
- 2 – Neutral (ना सहमत ना असहमत)
- 1 – Disagree (असहमत)
- 0 – Strongly disagree (पूर्णपणे असहमत)

Give three observation/ suggestions to improve the overall Teaching – Learning experience.
(अध्यापनाची आणि अभ्यासनाची प्रक्रिया अधिक सक्षम आणि गुणवत्तापूर्ण करण्यासाठी तीन सुचना आणि निरीक्षणे नोंदवा.)

I Am Happy Teacher Is So Good

**JOB
GEORGE**

Digitally signed
by JOBI GEORGE
Date:
2023.09.13
14:45:17 +05'30'