



Backward Class Youth Relief Committee's
BHIWAPUR MAHAVIDYALAYA

Accredited with Grade B (CGPA-2.54) by NAAC
At. Po. Th. Bhiwapur, Dist. Nagpur (MS) -441201
Email: bmv_bhiwapur@yahoo.com, bgm.college1990@gmail.com
Website :www.bmb.ac.in
Ph. No. 07106-232349 : Fax No. 07106-232064

Smt. Sumanmala B. Mulak
President

Hon. Shri Rajendra B. Mulak
Secretary

Dr. Jobi George
Principal

Ref. No. / BMV/2024-25/R.F.A/8699-A

Date 24/01/2025

To
The Hon. Registrar,
Rashtrasant Tukadoji Maharaj Nagpur University,
Jammalal Bajaj Administrative Building,
Mahatma Jotiba Phule Educational Premises,
Campus Square to Ambazari T-Point Road,
Nagpur - 440033

Subject: Submission of Reports on College Feedback Analysis, Student Satisfaction Survey and Action Taken Reports of Bhiwapur Mahavidyalaya for your kind perusal and consideration.

Reference: Recommendation from the Peer Team and SOP of NAAC given in Criterion I- 1.4 Feedback Systems.

Dear Sir/ Madam,

As part of our ongoing efforts to enhance the quality of education and services provided at Bhiwapur Mahavidyalaya, affiliated to Rashtrasant Tukadoji Maharaj Nagpur University, I am submitting the Reports of Feedback Analysis, Student Satisfaction Survey and the corresponding Action Taken Reports for the Academic Session 2023-2024 for your kind perusal and consideration.

The attached Reports provide a comprehensive analysis of the Feedback collected from Students, Parents, Alumni, Faculty, Non-Teaching staff, Employers and Management to elicit responses pertaining to the quality of knowledge imparted in the various aspects governing the Academics of the Institution. It outlines key insights, common concerns and suggestions for improvement. Based on the Feedback received, appropriate steps and improvisations have been initiated to address the issues identified to improve the overall experience of all the stakeholders. We are confident that these initiatives would contribute significantly to the continued growth and development of the Institution in general and the University in particular.

Kindly find the detailed Reports attached for your kind perusal and consideration. We look forward to your insights and recommendations, if any, in this regard. We thank you for your acknowledgement.

Thanking You,

Yours Sincerely

Principal
Bhiwapur Mahavidyalaya
Bhiwapur

24/1/25
कुलसचिवचे कार्यालय
राष्ट्रसंत तुकडोजी महाराज
नागपूर विद्यापीठ



BACKWARD CLASS YOUTH RELIEF COMMITTEE'S
BHIWAPUR MAHAVIDYALAYA

BHIWAPUR DIST. NAGPUR- 441201
ACCREDITED WITH GRADE 'B' (CGPA-2.54) BY NAAC, BENGALURU
ISO-9001:2015

2.7.1. STUDENT SATISFACTION SURVEY (SSS) ON OVERALL INSTITUTIONAL PERFORMANCE AND ACTION TAKEN REPORT

ACADEMIC SESSION- 2023-2024

Introduction

Student Satisfaction Survey, recommended by National Assessment and Accreditation Council includes questions to elicit responses from the students on the various aspects of teaching-learning, infrastructure, knowledge dissemination, use of ICT in Teaching-learning pedagogy, student centric approaches etc. The survey is an inherent part of the mechanisms of the Institution apart from Feedback to correct itself through its exit Feedback given by the outgoing students of the Institution.

The Student Satisfaction Survey has been collected from the outgoing students from the following disciplines: Bachelor of Science, Bachelor of Arts, Bachelor of Commerce, Bachelor of Vocation and Master of Arts.

Bachelor of Science

Analysis

Learners have given their responses on a 5 -point Likert Scale. The mode of collection was Survey Form.

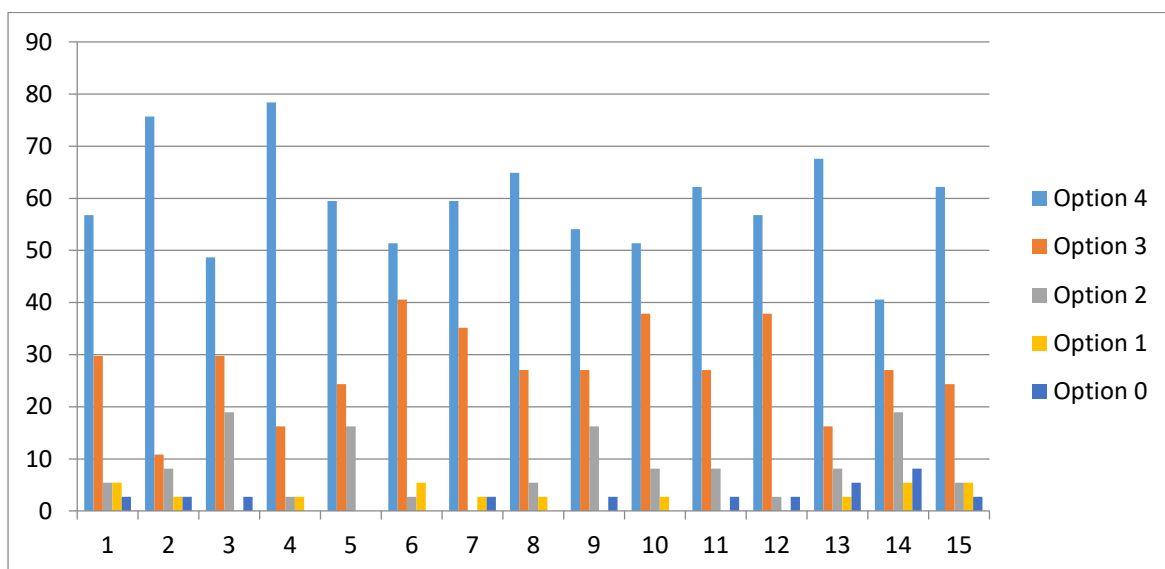
Option 4: 2.963
Option 3: 1.369
Option 2: 0.423
Option 1: 0.126
Option 0: 0.117

Remarks and Suggestions by students

One of the Questions which was as given, 'What percentage of teachers use ICT tools such as LCD, Projector, Multimedia, etc. while teaching' to which the elicited response on the Likert Scale was 8.10% which suggests an introspection in this regard needs to be done.

Action Taken on the Remarks and Suggestions

As mentioned above, the Institution through its Feedback on Teachers by students has analyzed and has taken cognizance of the remarks. The Institution encouraged the faculty to get themselves thoroughly acquainted with ICT enabled Tools, organized "Basic Computer Knowledge Programme", Digital Library is recommended for up gradation and Teachers are advised to use Moodle Site and Google Classroom for teaching.



On X-axis – Question number

On Y-axis- Response in %

1. For question 1-56.75% students responded to 85% to 100%, 29.73% students responded to 70 to 84%, 5.40% to 55 to 69%, 5.40% to 30 to 54% and 2.70% to below 30%.

Interpretation- It is hereby inferred that 56.75% students responded that 85% to 100% syllabus has been covered in the class, 29.73% students responded that 70 to 84%, 5.40% responded 55 to 69%, 5.40% responded 30 to 54% and 2.70% to below 30% syllabus covered in the class.

2. For question 2- 75.67% students responded to always effective, 10.81% responded to sometimes effective, 8.10% responded to satisfactorily, 2.70% responded to generally effective and 2.70% to very poor in communication.

Interpretation-75.67% students responded that teachers were always effectively able to communicate, 10.81% responded sometimes effective, 8.10% responded satisfactorily, 2.70% responded to generally effective and 2.70% to very poor in communication.

3. For question 3-48.65% students responded excellent, 29.72% responded very good, 18.91% responded good and 2.70% students responded poor.

Interpretation- 48.65% students responded excellent, 29.72% responded very good, 18.91% responded good and 2.70% students responded poor for the teachers approach for teaching.

4. For question 4-78.37% students responded to always fair, 16.21% agreed upon usually fair, 2.70% responded sometimes unfair and 2.70% students responded usually unfair.

Interpretation- 78.37% students responded to always fair, 16.21% agreed upon usually fair, 2.70% responded sometimes unfair and 2.70% students responded usually unfair that fairness of the internal evaluation process by the teacher is honest and impartial.

5. For question 5-59.45% students responded to every time, 24.32% agreed to usually, and 16.21% responded to occasionally.

Interpretation-59.45% students responded to every time performance of assignment discussed with them 24.32% agreed to usually, and 16.21% responded to occasionally that students' performance in assignment is discussed with them.

6. For question 6-51.35% students responded to significantly, 40.54% agreed to very well, 2.70% responded to moderately and 5.40% responded to marginally.

Interpretation-51.35% students responded to significantly, 40.54% agreed to very well, 2.70% responded to moderately and 5.40% responded to marginally that the teaching and mentoring process in the Institution facilitates students in cognitive, social and emotional growth.

7. For question 7- 59.45% students strongly agreed, 35.13% agreed, 2.70% disagreed and 2.70% strongly disagreed about provision of Institution's opportunities to learn and grow.

Interpretation- From the above, it is interpreted that 59.45% students strongly agreed that Institution provided multiple opportunities to learn and grow, 35.13% agreed, 2.70% disagreed and 2.70% strongly disagreed.

8. For question 8- 64.86% students strongly agreed on every time, 27.02% agreed upon usually, 5.40% occasionally and 2.70% rarely.

Interpretation- In the above graph, it is interpreted that 64.86% students strongly agreed on every time, 27.02% agreed upon usually, 5.40% occasionally and 2.70% rarely that teachers inform them about expected competencies, course outcomes and programme outcomes.

9. For question 9-54.05% students responded every time, 27.02% responded usually, 16.21% responded occasionally and 2.70% responded never.

Interpretation- In the above graph, it is interpreted that 54.05% students agreed that teachers are able to identify students' weakness and help them to overcome them, 27.02% responded to usually, 16.21% responded occasionally and 2.70% responded never.

10. For question 10-51.35% students strongly agreed, 37.83% agreed, 8.10% were neutral and 2.70% disagreed.

Interpretation- 51.35% students strongly agreed, 37.83% agreed, 8.10% were neutral and 2.70% disagreed that the Institution makes efforts to engage students in the monitoring, review and continuous quality improvement of the teaching-learning process.

11. For question 11- 62.16% students responded to a great extent, 27.02% to moderate, 8.10% to somewhat and 2.7% to very little.

Interpretation- 62.16% students responded to a great extent, 27.02% to moderate, 8.10% to somewhat and 2.7% to very little that teachers use student centric methods such as experiential learning, participative learning and problem-solving methodologies for enhancing learning experiences.

12. For question 12- 62.16% students strongly agreed, 27.02% agreed, 8.10% were neutral and 2.70% strongly disagreed.

Interpretation- 62.16% students strongly agreed, 27.02% agreed, 8.10% were neutral and 2.70% strongly disagreed that teachers encourage them to participate in extra-curricular activities.

13. For question 13-67.56% students strongly agreed, 16.21% agreed, 8.10% were neutral, 2.70% disagreed and 5.40% strongly disagreed.

Interpretation- 67.56% students strongly agreed, 16.21% agreed, 8.10% were neutral, 2.70% disagreed and 5.40% strongly disagreed that efforts were taken by teachers to inculcate soft skills and employability skills to make them ready for the world of work.

14. For question 14-40.54% students responded to more than 90%, 27.02% agreed to 70% to 89%, 18.91% responded to 50 to 69%, 5.40% responded to 30 to 49% and 8.10% responded to below 29%.

Interpretation- 14- 40.54% students responded to more than 90%, 27.02% agreed to 70% to 89%, 18.91% responded to 50 to 69%, 5.40% responded to 30 to 49% and 8.10% responded to below 29% that teachers use ICT tools.

15. For question 15- 62.16% students strongly agreed, 24.32% agreed, 5.40% were neutral, 2.70% disagreed and 2.70% strongly disagreed.

Interpretation: - 62.16% students strongly agreed, 24.32% agreed, 5.40% were neutral, 2.70% disagreed and 2.70% strongly disagreed to the overall quality of teaching-learning process in the College is very good.

Bachelor of Arts

Analysis

Learners have given their responses on a 5 -point Likert Scale. The mode of collection was Survey Form.

Option 4: 3.047

Option 3: 1.714

Option 2: 0.166

Option 1: 0.023

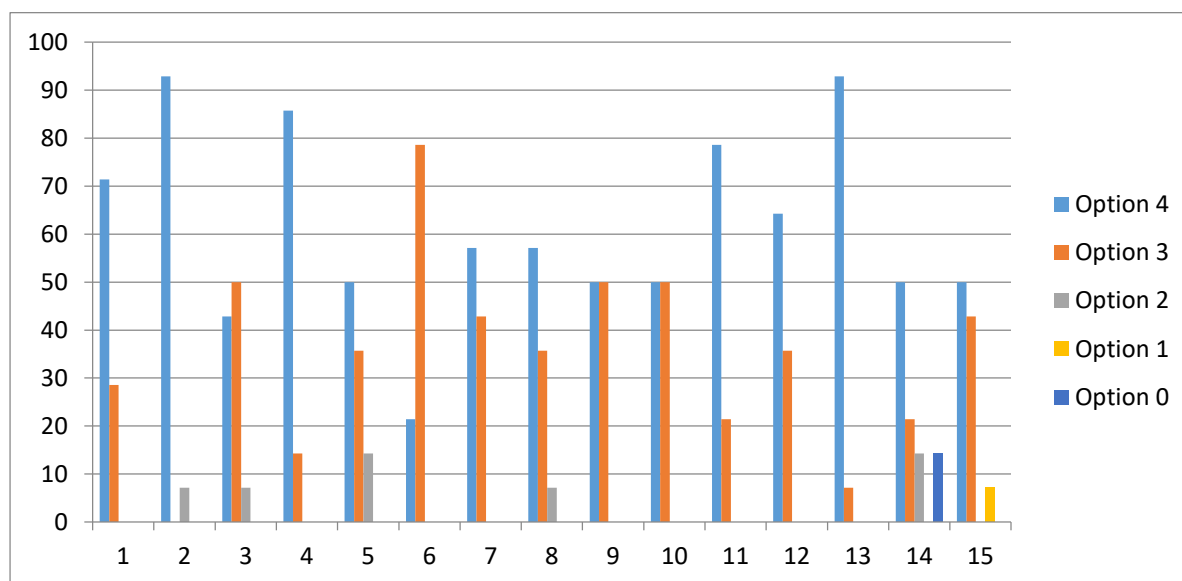
Option 0: 0.047

Remarks and Suggestions by Students

One of the Questions which was as given, 'What percentage of teachers use ICT tools such as LCD Projector, Multi-media, etc. while teaching' to which the elicited response on the Likert Scale was 14% which suggests an introspection in this regard needs to be done.

Action Taken on the Remarks and Suggestions

As mentioned above, the Institution through its Feedback on Teachers by students has analyzed and has taken cognizance of the remarks. The Institution encouraged the faculty to get thoroughly acquainted with ICT enabled Tools. Teachers have also been asked to organize advanced Programmes in "Basic Computer Knowledge Programme". Further, the Digital Library in the Institution is recommended for up gradation.



On X-axis – Question number

On Y-axis- Response in %

- 1. For question 1-71.42% students responded to 85 to 100% and 28.57% responded to 70 to 84%.**

Interpretation-71.42% students responded to 85 to 100% and 28.57% responded to 70 to 84% that syllabus was covered in the class.

- 2. For question 2- 92.85% students responded to always effective and 7.14% responded to satisfactorily.**

Interpretation- 92.85% students responded to always effective and 7.14% responded to satisfactorily in communication.

3. For question 3- 42.85% students responded excellent, 50% responded very good and 7.14% responded good.

Interpretation- 42.85% students responded excellent, 50% responded very good and 7.14% responded good for the teachers' approach to teaching.

4. For question 4- 85.71% students responded to always fair and 14.28% agreed upon usually fair.

Interpretation- 85.71% students responded to always fair and 14.28% agreed upon usually fair that fairness of the internal evaluation process by the teacher was honest and impartial.

5. For question 5-50% students responded to every time, 35.71% agreed to usually and 14.28% responded occasionally.

Interpretation-50% students responded to every time, 35.71% agreed to usually and 14.28% responded occasionally that students' performance in assignment is discussed with them.

6. For question 6-21.42% students responded to significantly and 78.57% agreed to very well.

Interpretation-21.42% students responded to significantly and 78.57% agreed to very well that the teaching and mentoring process in College facilitates students in cognitive, social and emotional growth.

7. For question 7- 57.14% students strongly agreed and 42.85% agreed.

Interpretation- From the above it is interpreted that 57.14% students strongly agreed and 42.85% agreed that the Institution provided multiple opportunities to learn and grow.

8. For question 8- 57.14% students strongly agreed on every time, 35.71% agreed upon usually and 7.14% occasionally.

Interpretation- From the above it is interpreted that 57.14% students strongly agreed on every time, 35.71% agreed upon usually and 7.14% occasionally that teachers informed them about expected competencies, Course Outcomes and Programme Outcomes.

9. For question 9- 50% students strongly agreed on every time and 50% agreed upon usually.

Interpretation- 50% students strongly agreed on every time and 50% agreed upon usually that the teachers are able to identify students' weaknesses and help them to overcome them.

10. For question 10- 50% students strongly agreed and 50% agreed.

Interpretation- 50% students strongly agreed and 50% agreed that the Institution makes efforts to engage students in the monitoring, review and continuous quality improvement of the teaching-learning process.

11. For question 11-78.57% responded to a great extent and 21.42% responded to moderate.

Interpretation- 78.57% responded to a great extent and 21.42% responded to moderate that teachers used student-centric methods such as experiential learning, participative learning and problem -solving methodologies for enhancing learning experiences.

12. For question 12-64.28% students strongly agreed and 35.71% agreed.

Interpretation- 64.28% students strongly agreed and 35.71% agreed that teachers encouraged them to participate in extra-curricular activities.

13. For question 13-92.85% students responded to a great extent and 7.14% to moderate.

Interpretation- 92.85% students responded to a great extent and 7.14% to moderate that the teachers have taken efforts to inculcate soft skills and employability skills to make them ready for the world of work.

14. For question 14- 50% students responded to above 90%, 21.42% agreed to 70% to 89%, 14.28% responded to 50 to 69 % and 14% to less than 29%.

Interpretation- 50% students responded to above 90%, 21.42% agreed to 70% to 89%, 14.28% responded to 50 to 69 % and 14% to less than 29% that teachers used ICT tools.

15. For question 15-50% students strongly agreed, 42.85% agreed and 7.14% disagreed.

Interpretation- 50% students strongly agreed, 42.85% agreed and 7.14% disagreed that the overall quality of teaching-learning process in the College is very good.

Bachelor of Commerce

Analysis

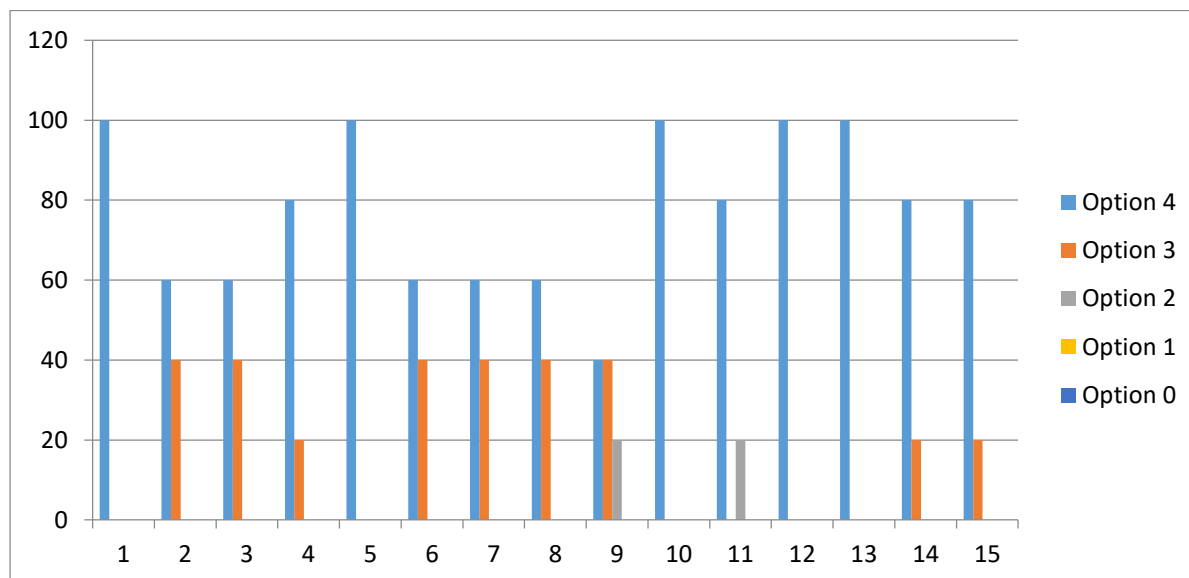
Learners have given their responses on a 5 -point Likert Scale. The mode of collection was Survey Form.

Option 4: 3.866
 Option 3: 1.000
 Option 2: 0.133
 Option 1: 0.000
 Option 0: 0.000

Remarks & Suggestions by Students - Feedback was positive

Action Taken on the Remarks and Suggestions

As mentioned above, the Institution through its Feedback on Teachers by students has analyzed and has taken cognizance of the remarks. The Institution encouraged the faculty to continue their work in the development of the Institution.



On X-axis – Question number

On Y-axis- Response in %

1. For question 1-100% students responded to 85 to 100%.

Interpretation-All responded that 85 to 100 % syllabus was covered in the class.

2. For question 2-60% students responded to always effective to communicate and 40% responded to sometimes effective.

Interpretation-60% students responded that teachers were always able to effectively communicate and 40% responded that they were sometimes effective to communicate with students.

3. For question 3- 60% students responded excellent and 40% responded very good.

Interpretation- 60% students responded excellent and 40% responded very good for the teachers' approach for teaching.

4. For question 4-80% students responded to always fair and 20% agreed upon usually fair.

Interpretation- 80% students responded to always fair and 20% agreed upon usually fair that fairness of the internal evaluation process by the teacher is always honest and impartial.

5. For question 5-100% students responded to every time.

Interpretation- All students responded that students' performance in assignment is usually discussed with them.

6. For question 6-60% students responded to significantly and 40% agreed to very well.

Interpretation- 60% students responded to significantly and 40% agreed to very well that the teaching and mentoring process in College facilitates students in cognitive, social and emotional growth.

7. For question 7- 60% students strongly agreed and 40% agreed.

Interpretation- From the above, it is interpreted that 60% students strongly agreed and 40% agreed that Institution provided multiple opportunities to learn and grow.

8. For question 8-60% students responded to every time and 40% agreed upon usually.

Interpretation- From the above, it is interpreted that 60% students responded to every time and 40% agreed upon usually that teachers informed them about expected competencies, course outcomes and programme outcomes.

9. For question 9-40% students strongly agreed on every time, 40% agreed upon usually and 20% responded to occasionally.

Interpretation- 40% students strongly agreed on every time, 40% agreed upon usually and 20% responded to occasionally that teachers are able to identify students' weakness and help them to overcome their issues.

10. For question 10- 100% students strongly agreed.

Interpretation- All students strongly agreed that the Institution makes efforts to engage students in the monitoring, review and continuous quality improvement of the teaching-learning process.

11. For question 11-80% students responded to a great extent and 20% responded to somewhat moderate.

Interpretation-80% students responded that teachers use student centric methods such as experiential learning, participative learning and problem-solving methodologies for enhancing learning experiences to a great extent, while 20% responded to somewhat moderate.

12. For question 12- 100% students strongly agreed.

Interpretation-All students strongly agreed that teachers encourage them to participate in extra-curricular activities.

13. For question 13-100% students responded to a great extent.

Interpretation- All students responded to a great extent that efforts have been taken by teachers to inculcate soft skills and employability skills to make them ready for the world of work.

14. For question 14-80% students responded to more than 90% and 20% agreed to 70% to 89%.

Interpretation- 80% students responded to more than 90% and 20% agreed to 70% to 89% that teachers use ICT tools.

15. For question 15- 80% students strongly agreed and 20% agreed.

Interpretation-80% students strongly agreed and 20% agreed that the overall quality of teaching-learning process in the College is very good.

Bachelor of Vocation

Analysis

Learners have given their responses on a 5 -point Likert Scale. The mode of collection was Survey Form.

Option 4: 1.800

Option 3: 1.333

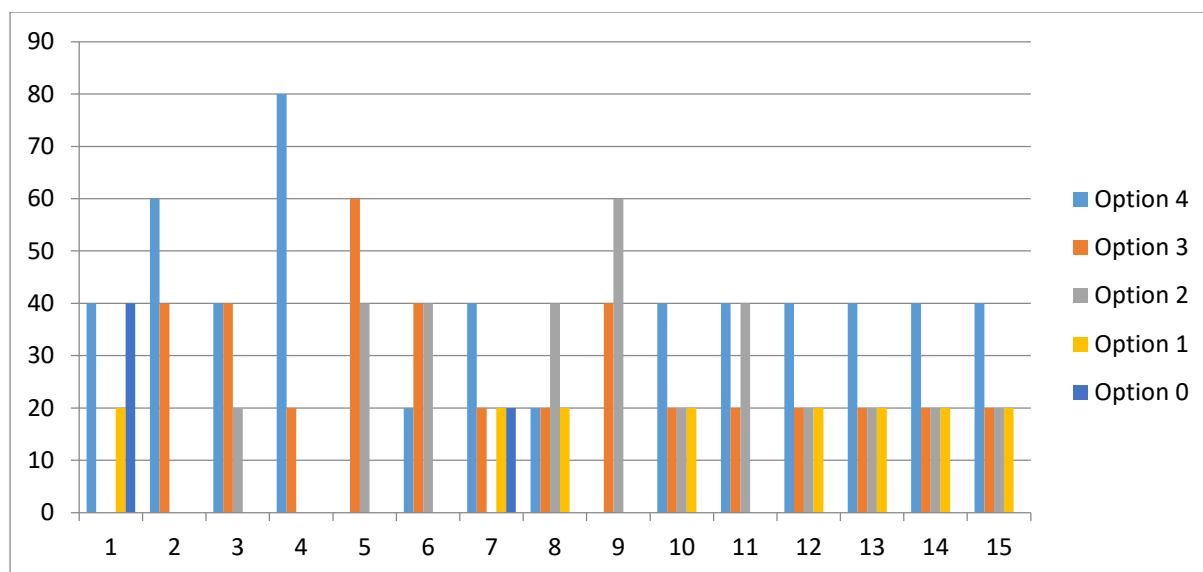
Option 2: 1.133
 Option 1: 0.533
 Option 0: 0.200

Remarks and Suggestions by students

One of the Questions which was as given, “How much of the syllabus was covered in the class?” to which the elicited response on the Likert Scale was 40% which suggests introspection in this regard needs to be done.

Action Taken on the Remarks and Suggestions

As mentioned above, the Institution through its Feedback on Teachers by students has analyzed and has taken cognizance of the remarks. The Institution encouraged the faculty to take extra classes to cover the whole syllabus.



On X-axis – Question number

On Y-axis- Response in %

1. For question 1 – 40% students responded to 85 to 100%, 20% % responded to 30 to 54% and 40% responded to below 30%.

Interpretation- 40% students responded to 85 to 100%, 20% % responded to 30 to 54% and 40% responded to below 30 that syllabus was covered in the class.

2. For question 2- 60% students responded to always effective and 40% responded to sometimes effective.

Interpretation- 60% students responded to always effective and 40% responded to sometimes effective that teachers were able to communicate.

3. For question 3-40% students responded excellent, 40% to very good and 20% to good.

Interpretation- 40% students responded excellent, 40% to very good and 20% to good for the teachers approach to teaching.

4. For question 4- 80% students responded to always fair and 20% to usually fair.

Interpretation- 80% students responded to always fair and 20% to usually fair for the evaluation process by teachers that fairness of the internal evaluation process by the teacher is always honest and impartial.

5. For question 5- 60% agreed to usually and 40% responded to occasionally.

Interpretation- 60% agreed to usually and 40% to occasionally that students' performance in assignment is usually discussed with them.

6. For question 6-20% students responded to significantly, 40% to very well and 40% responded to moderately.

Interpretation- 20% students responded to significantly, 40% to very well and 40% responded to moderately that the teaching and mentoring process in College facilitates students in cognitive, social and emotional growth.

7. For question 7- 40% students strongly agreed, 20% agreed, 20% disagreed and 20% strongly disagreed.

Interpretation- 40% students strongly agreed, 20% agreed, 20% disagreed and 20% strongly disagreed that Institution provided multiple opportunities to learn and grow.

8. For question 8-20% students responded to every time, 20% to usually, 40% to occasionally and 20% to responded to rarely.

Interpretation- 20% students responded to every time, 20% to usually, 40% to occasionally and 20% to responded to rarely that teachers informed them about expected competencies, Course Outcomes and Programme Outcomes.

9. For question 9-40% agreed and 60 % were neutral.

Interpretation- 40% agreed and 60 % were neutral that teachers are able to identify students' weakness and help them to overcome their issues.

10. For question 10- 40% students strongly agreed, 20% agreed, 20% were neutral and 20% disagreed.

Interpretation- 40% students strongly agreed, 20% agreed, 20% were neutral and 20% disagreed that the institution makes efforts to engage students in the monitoring, review and continuous quality improvement of the teaching learning process.

11. For question 11- 40% students responded to a great extent, 20% to moderate, 40% to somewhat.

Interpretation-40% students responded to a great extent, 20% to moderate, 40% to somewhat that teachers use student centric methods such as experiential learning, participative learning and problem- solving methodologies for enhancing learning experiences.

12. For question 12- 40% students strongly agreed, 20% agreed, 20% were neutral and 20% disagreed.

Interpretation- 40% students strongly agreed, 20% agreed, 20% were neutral and 20% disagreed that teachers encourage them to participate in extra-curricular activities.

13. For question 13- 40% students responded to a great extent, 20% responded to moderate, 20% to somewhat and 20% to very little.

Interpretation- 40% students responded to a great extent, 20% responded to moderate, 20% to somewhat and 20% to very little that efforts have been taken by teachers to inculcate soft skills and employability skills to make them ready for the world of work.

14. For question 14- 40% students responded to more than 90%, 20% agreed to 70% to 89%, 20% responded to 50% to 69% and 20% to 30-49%.

Interpretation- 40% students responded to more than 90%, 20% agreed to 70% to 89%, 20% responded to 50% to 69% and 20% to 30-49% that teachers use ICT tools.

15. For question 15- 40% students strongly agreed, 20% agreed, 20% were neutral and 20% disagreed.

Interpretation- 40% students strongly agreed, 20% agreed, 20% were neutral and 20% disagreed that the overall quality of teaching-learning process in the College is very good.

Master of Arts

Analysis

Learners have given their responses on a 5 -point Likert Scale. The mode of collection was Survey Form.

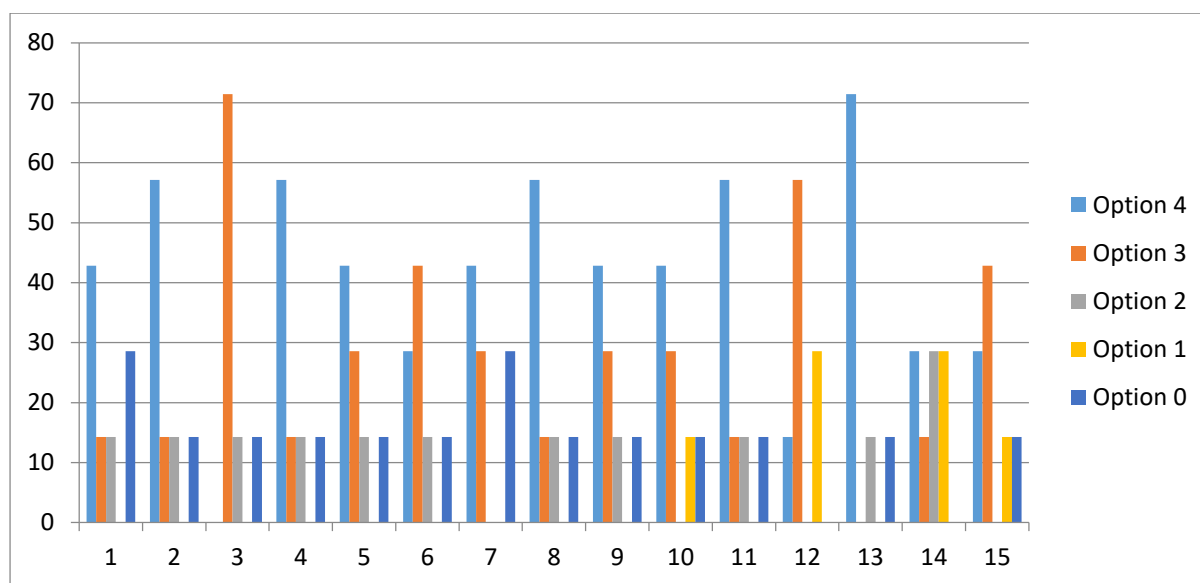
Option 4: 2.047
 Option 3: 1.380
 Option 2: 0.571
 Option 1: 0.285
 Option 0: 0.714

MA Students were not satisfied. The Feedback was negative

Remarks & Suggestions by Students- The overall Feedback was negative.

Action Taken on the Remarks and Suggestions

As mentioned above, the Institution through its Feedback on Teachers by students has analyzed and has taken cognizance of the remarks. The Institution encouraged the faculty to take extra classes using ICT tools.



On X-axis- Question number

On Y-axis- Response in %

1. For question 1-42.85% students responded to 85 to 100% and 14.28% responded to 70 to 84%, 14.28% responded to 55 to 69% and 28.57% responded to below 30%.

Interpretation- 42.85% students responded to 85 to 100% and 14.28% responded to 70 to 84%, 14.28% responded to 55 to 69% and 28.57% responded to below 30% to amount of syllabus was covered in the class.

2. For question 2- 57.14% students responded to always effective, 14.28% responded to sometimes effective, 14.28% responded to satisfactorily and 14.28% responded to very poor.

Interpretation- 57.14% students responded to always effective, 14.28% responded to sometimes effective, 14.28% responded to satisfactorily and 14.28% responded to very poor for teacher's ability to communicate.

3. For question 3-71.42% students responded very good, 14.28% responded good and 14.28% responded poor.

Interpretation- 71.42% students responded very good, 14.28% responded good and 14.28% responded poor for the teachers approach to teaching.

4. For question 4- 57.14% students responded to always fair, 14.28% to usually fair, 14.28% to sometimes unfair and 14.28% to unfair.

Interpretation- 57.14% students responded to always fair, 14.28% to usually fair, 14.28% to sometimes unfair and 14.28% to unfair that fairness of the internal evaluation process by the teacher was honest and impartial.

5. For question 5-42.85% students responded to every time, 28.85% agreed to usually, 14.28% responded to occasionally and 14.28% responded to never.

Interpretation- 42.85% students responded to every time, 28.85% agreed to usually, 14.28% responded to occasionally and 14.28% responded to never that students' performance in assignment is discussed with them.

6. For question 6- 21.42% students responded to significantly and 42.85% agreed to very well, 14.28% to moderately and 14.28% to not at all.

Interpretation- 21.42% students responded to significantly and 42.85% agreed to very well, 14.28% to moderately and 14.28% to not at all that the teaching and mentoring process in college facilitates students in cognitive, social and emotional growth.

7. For question 7-42.85% students strongly agreed, 28.57% agreed and 28.57% strongly agreed.

Interpretation- 42.85% students strongly agreed, 28.57% agreed and 28.57% strongly agreed that Institution provided multiple opportunities to learn and grow.

8. For question 8- 57.14% students strongly agreed on every time, 14.28% agreed upon usually, 14.28% responded to occasionally and 14.28% to never.

Interpretation- 57.14% students strongly agreed on every time, 14.28% agreed upon usually, 14.28% responded to occasionally and 14.28% to never that teachers informed them about expected competencies, Course Outcomes and programme outcomes.

9. For question 9- 42.85% students strongly agreed on every time, 28.57% agreed upon usually, 14.28 to occasionally and 14.28% to never.

Interpretation- 42.85% students strongly agreed on every time, 28.57% agreed upon usually, 14.28 to occasionally and 14.28% to never that teachers are able to identify students' weakness and help them to overcome them.

10. For question 10- 42.85% students strongly agreed, 28.57% agreed, 14.28 disagreed and 14.28 strongly disagreed.

Interpretation- 42.85% students strongly agreed, 28.57% agreed, 14.28 disagreed and 14.28 strongly disagreed that the Institution makes efforts to engage students in the monitoring, review and continuous quality improvement of the teaching-learning process.

11. For question 11-57.14% responded to a great extent, 14.28% responded to moderate, 14.28 to somewhat and 14.28 to not at all.

Interpretation- 57.14% responded to a great extent, 14.28% responded to moderate, 14.28 to somewhat and 14.28 to not at all that teachers used student-centric methods such as experiential learning, participative learning and problem-solving methodologies for enhancing learning experiences.

12. For question 12-14.28% students strongly agreed, 57.14% agreed and 28.57% disagreed.

Interpretation- 14.28% students strongly agreed, 57.14% agreed and 28.57% disagreed that teachers encouraged them to participate in extra-curricular activities.

13. For question 13- 71.42% students responded to a great extent, 14.28% to somewhat and 14.28% to not at all.

Interpretation- 71.42% students responded to a great extent, 14.28% to somewhat and 14.28% to not at all that efforts have been taken by teachers to inculcate soft skills and employability skills to make them ready for the world of work.

14. For question 14- 28.57% students responded to above 90%, 14.28% agreed to 70% to 89%, 28.57% responded to 50 to 69 % and 28.57% to 30-49%.

Interpretation- 28.57% students responded to above 90%, 14.28% agreed to 70% to 89%, 28.57% responded to 50 to 69 % and 28.57% to 30-49% that teachers used ICT tools.

15. For question 15-28.57% students strongly agreed, 42.85% agreed and 14.28% disagreed and 14.28% strongly disagreed.

Interpretation- 28.57% students strongly agreed, 42.85% agreed and 14.28% disagreed and 14.28% strongly disagreed that the overall quality of teaching-learning process in the College is very good.

Appendix-Sample Online Form for Student Satisfaction Survey

भिवापूर महाविद्यालय, भिवापूर सत्र: 2023-24 विद्यार्थी समाधान सर्वेक्षण (Institutional Student Satisfaction Survey / Exit Feedback)

B I U  

Form description

Full Name of the Student *
(विद्यार्थ्याचे पूर्ण नाव)

Short answer text

Age (वय) *

Short answer text

What Programme are you pursuing now? *

(आता तुम्ही कोणत्या कार्यक्रमाचा पाठपुरावा करत आहात?)

B I U  

Bachelor's

Master's

What faculty do you belong to? *

(तुम्ही सध्या कोणत्या विद्याशाखेत शिकत आहात?)

Arts

Commerce

Science

Professional

Other

Class *

Short answer text

Gender *

- Male
- Female
- Other...

Aadhar Id number/Student Id number *

Short answer text

Mobile Number *

Short answer text

Mobile Number of Parents *

Short answer text

Postal Address *

Short answer text

E-mail Id *

Short answer text

01. How much of the syllabus was covered in the class? *

(वर्गात कीती टक्के अभ्यासक्रम पूर्ण करण्यात आले?)

- 4 – 85 to 100% (85 ते 100%)
- 3 – 70 to 84% (70 ते 84%)
- 2 – 55 to 69% (55 ते 69%)
- 1– 30 to 54% (30 ते 54%)
- 0 –Below 30% (30 % च्या खाली)

02. How well were the teachers able to communicate? *

(शिक्षकांची वर्गातील संवादाची शैली कशी होती?)

B *I* U ☰ ✕

- 4 – Always effective (नेहमीच परिणामकारक)
- 3 – Sometimes effective (कधी कधी परिणामकारक)
- 2 – Satisfactorily (परिणामकारक)
- 1– Generally ineffective (साधारणतः अपरिणामकारक)
- 0– Very poor in communication (संवाद्शैलीमध्ये फारच वाईट)

03. The teacher's approach to teaching can be best described as- *

(शिक्षकांचा वर्गात शिकविण्याबाबतचा दृष्टीकोन या प्रकारे उत्तम वर्णन करता येईल)

- 4– Excellent (अति उत्तम)
- 3 – Very good (फार चांगला)
- 2 – Good (चांगला)
- 1 – Fair (ठीक)
- 0– Poor (वाईट)

04. Fairness of the internal evaluation process * by the teachers.

(अंतर्गत मुल्यांकनाबाबत शिक्षकांचा प्रामाणिकपणा.)

B *I* U ↺ ✕

- 4 – Always fair (नेहमीच प्रामाणीक)
- 3 – Usually fair (साधारणतः प्रामाणीक)
- 2 – Sometimes unfair (कधी कधी अप्रामाणीक)
- 1 – Usually unfair (साधारणतः अप्रामाणीक)
- 0 – Unfair (अप्रामाणीक)

05. Was your performance in assignments * discussed with you?

(आपण सादर केलेल्या स्वाध्यायासंदर्भात आपणांशी चर्चा झाली का?)

- 4 – Every time (प्रत्येक वेळी)
- 3 – Usually (सदैव)
- 2 – Occasionally/Sometimes (प्रासंगिक/कधी-कधी)
- 1 – Rarely (अपवादात्मक)
- 0 – Never (कधीच नाही)

06. The teaching and mentoring process in * your institution facilitates you in cognitive, social and emotional growth.

(महाविद्यालयातील शिक्षण आणि मार्गदर्शन प्रक्रीया आपणांस सामाजिक आणि भावनीक विकासासाठी सहाय्यक आहेत.)

B *I* U ↺ ✕

- 4 – Significantly (लक्षणीय)
- 3 – Very well (खूप चांगले)
- 2 – Moderately (माफक प्रमाणात)
- 1 – Marginally (किरकोळ)
- 0 – Not at all (अजिबात नाही)

07. The institution provides multiple opportunities to learn and grow. *

(महाविद्यालयामार्फत शिक्षणासोबतच, आपणांस सर्वांगीन विकासाच्या अनेक संधी उपलब्ध करून दिल्या जातात)

- 4 – Strongly agree (पुर्णपणे सहमत)
- 3 – Agree (सहमत)
- 2 – Neutral (ना सहमत ना असहमत)
- 1 – Disagree (असहमत)
- 0– Strongly disagree (पुर्णपणे असहमत)

08. Teachers inform you about your Expected Competencies, Course outcomes and Program outcomes. *

(शिक्षक आपल्यातील अपेक्षित क्षमता, अभ्यासक्रम आणि अभ्यासक्रमातुन होणारी फलनिष्पत्ती ह्या संदर्भात आपल्याला सुचना करतात.)

- 4 – Every time (प्रत्येक वेळी)
- 3 – Usually (सदैव)
- 2– Occasionally/Sometimes (प्रासंगिक/कधी-कधी)
- 1 – Rarely (अपवादात्मक)
- 0– Never (कधीच नाही)

...

09. Teachers are able to identify your weaknesses and help you to overcome them. *

(शिक्षक आपल्यातील कमतरता समजावून घेऊन त्या दूर करण्यासंदर्भात आपली मदत करतात.)

B *I* U ☰ ✕

- 4 – Every time (प्रत्येक वेळी)
- 3 – Usually (सदैव)
- 2 – Occasionally/Sometimes (प्रासंगिक/कधी-कधी)
- 1 – Rarely (अपवादात्मक)
- 0 – Never (कधीच नाही)

10. The institution makes effort to engage students in the monitoring, review and continuous quality improvement of the Teaching Learning Process. *

(विद्यार्थ्यांना देखरेख, पुनरावलोकन आणि अध्यापनात सतत सुधारणा करण्याच्या प्रक्रियेत संस्था सहभागी करून घेते.)

B *I* U  

- 4 - Strongly agree (पुर्णपणे सहमत)
- 3 - Agree (सहमत)
- 2 - Neutral (ना सहमत ना असहमत)
- 1 - Disagree (असहमत)
- 0 - Strongly disagree (पुर्णपणे असहमत)

11. The Institution/ teachers use Student Centric Methods , such as Experiential Learning , Participative Learning and Problem Solving Methodologies for enhancing learning experiences. *

(प्रयोगात्मक, सहभागात्मक शिक्षण आणि समस्या सोडविण्यासारख्या, विद्यार्थी केंद्रीत पध्दतींचा उपयोग शिकण्याचा अनुभव उन्नत करण्यामध्ये शिक्षक आणि संस्थेमार्फत केला जातो.)

B *I* U  

- 4 - To a great extent (पुर्ण प्रयत्न करतात)
- 3 - Moderate (पुरेसे प्रयत्न करतात)
- 2 - Some what (काही प्रमाणात प्रयत्न करतात)
- 1 - Very little (फार कमी प्रयत्न करतात)
- 0 - Not at all (अजिबात प्रयत्न करीत नाही)

12. Teachers encourage you to participate in Extracurricular Activities. *

(शिक्षक आपणांस अभ्यासेतर उपक्रमांमध्ये सहभागी होण्यासाठी प्रोत्साहित करतात.)

- 4 – Strongly agree (पुर्णपणे सहमत)
- 3 – Agree (सहमत)
- 2 – Neutral (ना सहमत ना असहमत)
- 1 – Disagree (असहमत)
- 0 – Strongly disagree (पुर्णपणे असहमत)

13. Efforts are made by the Institute /teachers to inculcate soft skills, life skills and employability skills to make you ready for the world of work. *

(तुम्हाला व्यावहारीक जगाचे ज्ञान प्राप्त व्हावे ह्यासाठी सहज कौशल्य, जिवन कौशल्य आणि व्यवहार कौशल्याच्या माध्यमातून संस्था आणि शिक्षक प्रयत्न करतात.)

- 4 – To a great extent (पुर्ण प्रयत्न करतात)
- 3 – Moderate (पुरेसे प्रयत्न करतात)
- 2 – Some what (काही प्रमाणात प्रयत्न करतात)
- 1 – Very little (फार कमी प्रयत्न करतात)
- 0 – Not at all (अजिबात प्रयत्न करीत नाही)

14. What percentage of teachers use ICT tools such as LCD Projector, Multimedia, etc. while teaching. *

(शिकवितांना LCD, Projector, Multimedia ह्यासारख्या संसाधनांचा वापर कीती टक्के शिक्षक करतात.)

- 4 – Above 90% (90 टक्क्यांच्या वर)
- 3 – 70 – 89% (70 ते 89 टक्के)
- 2 – 50 – 69% (50 ते 69 टक्के)
- 1 – 30 – 49% (30 ते 49 टक्के)
- 0 – Below 29% (29 टक्का पेक्षा कमी)

15. The overall quality of Teaching – Learning *

Process in your Institute is very good.

(आपल्या महाविद्यालयातील अध्यापनाची आणि अध्ययनाची प्रक्रिया एकंदर फार चांगली आहे.)

- 4 –Strongly agree (पुर्णपणे सहमत)
- 3 – Agree (सहमत)
- 2 – Neutral (ना सहमत ना असहमत)
- 1 – Disagree (असहमत)
- 0 – Strongly disagree (पुर्णपणे असहमत)

Give three observation/ suggestions to improve the overall Teaching – Learning experience.

(अध्यापनाची आणि अध्ययनाची प्रक्रिया अधिक सक्षम आणि गुणवत्तापुर्ण करण्यासाठी तिन सुचना आणि निरिक्षणे नोंदवा.)

Long answer text

Sample online form submitted by student

Responses cannot be edited

भिवापूर महाविद्यालय, भिवापूर सत्र: 2023-24 विद्यार्थी समाधान सर्वेक्षण (Institutional Student Satisfaction Survey / Exit Feedback)

* Indicates required question

Full Name of the Student *

(विद्यार्थ्यांचे पूर्ण नाव)

Aachal Sunil Gedam

Age (वय) *

22

What Programme are you pursuing now? *

(आता तुम्ही कोणत्या कार्यक्रमाचा पाठपुरावा करत आहात?)

Bachelor's

Master's

What faculty do you belong to? *

(तुम्ही सध्या कोणत्या विद्याशाखेत शिकत आहात?)

Arts

Commerce

Science

Professional

Other

Class *

3rd year

Gender *

Male

Female

Other:

Aadhar Id number/Student Id number *

424874013191

Mobile Number *

7350520176

Mobile Number of Parents *

8554972634

Postal Address *

Pardesi mohalla kawrapeth umred

E-mail Id *

aachalgedam02@gmail.com

01. How much of the syllabus was covered in the class? *

(वर्गात कीती टक्के अभ्यासक्रम पूर्ण करण्यात आले?)

- 4 – 85 to 100% (85 ते 100%)
- 3 – 70 to 84% (70 ते 84%)
- 2 – 55 to 69% (55 ते 69%)
- 1– 30 to 54% (30 ते 54%)
- 0 –Below 30% (30 % च्या खाली)

02. How well were the teachers able to communicate? *

(शिक्षकांची वर्गातील संवादाची शैली कशी होती?)

- 4 – Always effective (नेहमीच परिणामकारक)
- 3 – Sometimes effective (कधी कधी परिणामकारक)
- 2 – Satisfactorily (परिणामकारक)
- 1– Generally ineffective (साधारणतः अपरिणामकारक)
- 0– Very poor in communication (संवादशैलीमध्ये फारच वाईट)

03. The teacher's approach to teaching can be best described as- *

(शिक्षकांचा वर्गात शिकविण्याबाबतचा दृष्टीकोन या प्रकारे उत्तम वर्णन करता येईल)

- 4– Excellent (अति उत्तम)
- 3 – Very good (फार चांगला)
- 2 – Good (चांगला)
- 1 – Fair (ठीक)
- 0– Poor (वाईट)

04. Fairness of the internal evaluation process by the teachers. *
(अंतर्गत मुल्यांकनाबाबत शिक्षकांचा प्रामाणिकपणा.)

- 4 – Always fair (नेहमीच प्रामाणीक)
- 3 – Usually fair (साधारणतः प्रामाणीक)
- 2 – Sometimes unfair (कधी कधी अप्रामाणीक)
- 1 – Usually unfair (साधारणतः अप्रामाणीक)
- 0– Unfair (अप्रामाणीक)

05. Was your performance in assignments discussed with you? *
(आपण सादर केलेल्या स्वाध्यायासंदर्भात आपणांशी चर्चा झाली का?)

- 4 – Every time (प्रत्येक वेळी)
- 3 – Usually (सदैव)
- 2 – Occasionally/Sometimes (प्रासंगिक/कधी-कधी)
- 1 – Rarely (अपवादात्मक)
- 0– Never (कधीच नाही)

06. The teaching and mentoring process in your institution facilitates you in cognitive, social and emotional growth. *
(महाविद्यालयातील शिक्षण आणि मार्गदर्शन प्रक्रीया आपणांस सामाजिक आणि भावनीक विकासासाठी सहाय्यक आहेत.)

- 4 – Significantly (लक्षणीय)
- 3 – Very well (खूप चांगले)
- 2 – Moderately (माफक प्रमाणात)
- 1 – Marginally (किरकोळ)
- 0– Not at all (अजिबात नाही)

07. The institution provides multiple opportunities to learn and grow. *

(महाविद्यालयामार्फत शिक्षणासोबतच, आपणांस सर्वांगीन विकासाच्या अनेक संधी उपलब्ध करून दिल्या जातात)

- 4 – Strongly agree (पुर्णपणे सहमत)
- 3 – Agree (सहमत)
- 2 – Neutral (ना सहमत ना असहमत)
- 1 – Disagree (असहमत)
- 0– Strongly disagree (पुर्णपणे असहमत)

08. Teachers inform you about your Expected Competencies, Course outcomes and Program outcomes. *

(शिक्षक आपल्यातील अपेक्षित क्षमता, अभ्यासक्रम आणि अभ्यासक्रमातून होणारी फलनिष्पत्ती ह्या संदर्भात आपल्याला सुचना करतात.)

- 4 – Every time (प्रत्येक वेळी)
- 3 – Usually (सदैव)
- 2– Occasionally/Sometimes (प्रासंगिक/कधी-कधी)
- 1 – Rarely (अपवादात्मक)
- 0– Never (कधीच नाही)

09. Teachers are able to identify your weaknesses and help you to overcome them. *

(शिक्षक आपल्यातील कमतरता समजावून घेऊन त्या दूर करण्यासंदर्भात आपली मदत करतात.)

- 4 – Every time (प्रत्येक वेळी)
- 3 – Usually (सदैव)
- 2 – Occasionally/Sometimes (प्रासंगिक/कधी-कधी)
- 1 – Rarely (अपवादात्मक)
- 0 – Never (कधीच नाही)

10. The institution makes effort to engage students in the monitoring, review and continuous quality *
improvement of the Teaching Learning Process.

(विद्यार्थ्यांना देखरेख, पुनरावलोकन आणि अध्यापनात सतत सुधारणा करण्याच्या प्रक्रियेत संस्था सहभागी करून घेते.)

- 4 – Strongly agree (पुर्णपणे सहमत)
- 3 – Agree (सहमत)
- 2 – Neutral (ना सहमत ना असहमत)
- 1 – Disagree (असहमत)
- 0 – Strongly disagree (पुर्णपणे असहमत)

11. The Institution/ teachers use Student Centric Methods , such as Experiential Learning , *
Participative Learning and Problem Solving Methodologies for enhancing learning experiences.

(प्रयोगात्मक, सहभागात्मक शिक्षण आणि समस्या सोडविण्यासारख्या, विद्यार्थी केंद्रीत पध्दतींचा उपयोग शिकण्याचा अनुभव
उन्नत करण्यामध्ये शिक्षक आणि संस्थेमार्फत केला जातो.)

- 4 – To a great extent (पुर्ण प्रयत्न करतात)
- 3 – Moderate (पुरेसे प्रयत्न करतात)
- 2 – Some what (काही प्रमाणात प्रयत्न करतात)
- 1 – Very little (फार कमी प्रयत्न करतात)
- 0 – Not at all (अजिबात प्रयत्न करीत नाही)

12. Teachers encourage you to participate in Extracurricular Activities. *

(शिक्षक आपणांस अभ्यासेतर उपक्रमांमध्ये सहभागी होण्यासाठी प्रोत्साहित करतात.)

- 4 – Strongly agree (पुर्णपणे सहमत)
- 3 – Agree (सहमत)
- 2 – Neutral (ना सहमत ना असहमत)
- 1 – Disagree (असहमत)
- 0 – Strongly disagree (पुर्णपणे असहमत)

13. Efforts are made by the Institute /teachers to inculcate soft skills, life skills and employability skills to make you ready for the world of work. *

(तुम्हाला व्यावहारीक जगाचे ज्ञान प्राप्त व्हावे ह्यासाठी सहज कौशल्य, जिवन कौशल्य आणि व्यवहार कौशल्याच्या माध्यमातून संस्था आणि शिक्षक प्रयत्न करतात.)

- 4 – To a great extent (पुर्ण प्रयत्न करतात)
- 3 – Moderate (पुरेसे प्रयत्न करतात)
- 2 – Some what (काही प्रमाणात प्रयत्न करतात)
- 1 – Very little (फार कमी प्रयत्न करतात)
- 0 – Not at all (अजिबात प्रयत्न करीत नाही)

14. What percentage of teachers use ICT tools such as LCD Projector, Multimedia, etc. while teaching. *

(शिकवितांना LCD, Projector, Multimedia ह्यासारख्या संसाधनांचा वापर कीती टक्के शिक्षक करतात.)

- 4 – Above 90% (90 टक्क्यांच्या वर)
- 3 – 70 – 89% (70 ते 89 टक्के)
- 2 – 50 – 69% (50 ते 69 टक्के)
- 1 – 30 – 49% (30 ते 49 टक्के)
- 0 – Below 29% (29 टक्का पेक्षा कमी)

15. The overall quality of Teaching – Learning Process in your Institute is very good. *

(आपल्या महाविद्यालयातील अध्यापनाची आणि अध्ययनाची प्रक्रिया एकंदर फार चांगली आहे.)

- 4 – Strongly agree (पुर्णपणे सहमत)
- 3 – Agree (सहमत)
- 2 – Neutral (ना सहमत ना असहमत)
- 1 – Disagree (असहमत)
- 0 – Strongly disagree (पुर्णपणे असहमत)

Give three observation/ suggestions to improve the overall Teaching – Learning experience.

(अध्यापनाची आणि अध्ययनाची प्रक्रिया अधिक सक्षम आणि गुणवत्तापुर्ण करण्यासाठी तिन सुचना आणि निरीक्षणे नोंदवा.)

.....

Submitted 5/1/24, 1:28 PM

Principal
Bhiwapur Mahavidyalaya



Backward Class Youth Relief Committee's
BHIWAPUR MAHAVIDYALAYA

Accredited with Grade B (CGPA-2.54) by NAAC
At. Po. Th. Bhiwapur, Dist. Nagpur (MS) -441201
Email: bmv_bhiwapur@yahoo.com, bgm.college1990@gmail.com
Website :www.bmb.ac.in
Ph. No. 07106-232349 : Fax No. 07106-232064

Smt. Sumanmala B. Mulak
President

Hon. Shri Rajendra B. Mulak
Secretary

Dr. Jobi George
Principal

Ref. No.

Date 21/06/2024

Action Plan on Students' Satisfaction Survey Analysis-2023-2024

Introduction

Taking action based on the Students' Satisfaction Survey is crucial for improving the educational experience. It shows a commitment to addressing students' needs and concerns, fostering a positive learning environment. Forwarding the analysis to Management ensures that informed decisions are made to enhance teaching quality, facilities and overall satisfaction, leading to a more engaging and effective educational experience for all the students.

Action Taken

In response to the recent Students' Satisfaction Survey, Bhiwapur Mahavidyalaya has implemented several measures to enhance teaching quality by integrating Information and Communication Technology (ICT) tools.

Firstly, all teachers have been notified of the necessity to stay updated with the latest ICT tools. This ensures that they can effectively incorporate technology into their teaching methods, making learning more interactive and engaging for students.

The ICT Committee of Bhiwapur Mahavidyalaya has been instructed to make it mandatory for Faculty members to mandatorily engage certain portions of the syllabus using ICT. This will involve the use of Digital Boards and Computer Laboratories, helping students benefit from modern teaching methods and resources.

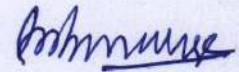
Furthermore, the Seminar and Symposia Committee has been notified through a letter dated 21st June, 2024 to organize Workshops for Faculty on the use of ICT in classrooms. These Workshops will provide training on effectively using Digital tools and resources, ensuring that all the teachers are equipped to utilize these technologies in their teaching practices.



Conclusion

The Internal Quality Assurance Cell of the Institution will closely monitor and through its Syllabus Compliance Committee will ensure that the use of ICT is documented in the daily Work- Book of the Faculty.

These steps are aimed at enhancing the overall learning experience for students and ensuring that Faculty members are well-prepared to meet the demands of modern education.



PRINCIPAL
Bhivapur Mahavidyalaya
Bhivapur, Dist. Nagpur

Introduction

Taking action based on the Students' Satisfaction Survey is a key step in improving the educational experience. It shows a commitment to address students' needs and concerns, fostering a positive learning environment. Forwarding the analysis to Management ensures that informed decisions are made to enhance teaching quality, facilities and overall campus services, leading to a more engaging and effective educational experience for all the students.

Action Taken

In response to the recent Students' Satisfaction Survey, Bhivapur Mahavidyalaya has implemented several measures to enhance teaching quality by integrating Information and Communication Technology (ICT) tools.

Firstly, all teachers have been notified of the necessity to stay updated with the latest ICT tools. This ensures that they can effectively incorporate technology into their teaching methods, making learning more interactive and engaging for students.

The ICT Committee of Bhivapur Mahavidyalaya has been instructed to make it mandatory for Faculty members to mandatorily engage certain portions of the syllabus using ICT. This will involve the use of Digital Boards and Computer Laboratories, helping students benefit from modern teaching methods and resources.

Furthermore, the Seminar and Symposia Committee has been notified through a letter dated 11th June, 2024 to organize Workshops for Faculty on the use of ICT in classrooms. These Workshops will provide training on effectively using Digital tools and resources, ensuring that all the teachers are equipped to utilize these technologies in their teaching practices.





Backward Class Youth Relief Committee's
BHIWAPUR MAHAVIDYALAYA

Accredited with Grade B (CGPA-2.54) by NAAC
At. Po. Th. Bhiwapur, Dist. Nagpur (MS) -441201
Email: bmv_bhiwapur@yahoo.com, bgm.college1990@gmail.com
Website :www.bmb.ac.in
Ph. No. 07106-232349 : Fax No. 07106-232064

Smt. Sumanmala B. Mulak
President

Hon. Shri Rajendra B. Mulak
Secretary

Dr. Jobi George
Principal

Ref. No.

Date 21/06/2024

Action Taken Report on Student Satisfaction Survey: Enhancing ICT in Teaching-Learning Pedagogy

Introduction

The Students' Satisfaction Survey (SSS) conducted this year revealed a critical area of improvement: the integration of Information and Communication Technology (ICT) in our teaching-learning pedagogy. Responding to this Feedback, the Management has made significant recommendations aimed at augmenting the use of technology in the classrooms to enrich the educational experience. This Report details the actions taken, the Annual Report of the Committee for Promoting the Use of Technology in Teaching, and the measures implemented to ensure all committees comply with the set directives.

ICT Integration Initiatives

Following the Students' Satisfaction Survey results, the Committee for Promoting the Use of Technology in Teaching convened to implement a comprehensive draft plan for ICT integration.

Key initiatives which were included are as follows:

1. **Use of ICT enabled Infrastructure:** Classrooms which are ICT enabled with audio-visual aids, including LCD Projectors, Overhead Projectors (OHP), Interactive Boards, and Smart Boards have thoroughly gone through maintenance for wear and tear apart from the regular maintenance service. This ICT infrastructure upgrade was aimed to facilitate a more interactive and engaging learning environment.

2. **Faculty Training:** A series of Training Workshops were conducted to equip Faculty members with the necessary skills to effectively utilize these technological tools. The training focused on the pedagogical integration of ICT to enhance teaching methodologies and student engagement.



3. **Complete Students' Computer Literacy Programme:** To ensure that students can fully get benefit from the ICT tools available, a comprehensive Computer Literacy Programme was introduced. This programme covers basic to advanced ICT skills, ensuring that students can effectively participate in a technology-enhanced learning environment.

Implementation and Compliance

The Seminar and Symposia Committee was instructed to incorporate the use of ICT tools in all the events and presentations. This initiative has been successfully implemented, with all the Seminars and Symposia now utilizing audio-visual aids to enhance the delivery of content.

The Syllabus Compliance Committee was tasked with ensuring the documentation of the use of ICT-based teaching methods and assessments. The committee has completed this task, ensuring that the syllabus now mandates the use of ICT in teaching and learning processes.

Conclusion

The actions taken in response to the Students' Satisfaction Survey have been substantial, with a clear focus on integrating ICT into the teaching-learning process. The measures implemented are expected to significantly enhance the quality of education provided and improve students' satisfaction. The Management will continue to monitor the impact of these initiatives and make further improvements as necessary. Regular Feedback will be sought from students and faculty to ensure that the ICT integration meets the evolving needs of the academic community.

Key initiatives which were included are as follows:

1. **Use of ICT enabled Infrastructure:** Classrooms which are ICT enabled with audio-visual aids, including LCD Projectors, Overhead Projectors, Interactive Boards, and Smart Boards have thoroughly gone through maintenance for wear and tear apart from the regular maintenance. ICT infrastructure upgrade was aimed to facilitate a more engaging learning environment.

2. **Faculty Training:** A series of Training Workshops were conducted to equip faculty members with the necessary skills to effectively utilize these technological tools. The training focused on the pedagogical integration of ICT to enhance teaching methodologies and student engagement.

[Handwritten Signature]

PRINCIPAL
Bhiwapur Mahavidyalaya
Bhiwapur, Dist. Nagpur





Backward Class Youth Relief Committee's
BHIWAPUR MAHAVIDYALAYA

Accredited with Grade B (CGPA-2.54) by NAAC
At. Po. Th. Bhiwapur, Dist. Nagpur (MS) -441201
Email: bmv_bhiwapur@yahoo.com, bgm.college1990@gmail.com
Website :www.bmb.ac.in
Ph. No. 07106-232349 : Fax No. 07106-232064

Smt. Sumanmala B. Mulak
President

Hon. Shri Rajendra B. Mulak
Secretary

Dr. Jobi George
Principal

Ref. No.

Date 25/06/2024

25th June, 2024

To
The Secretary
Backward Class Youth Relief Committee
Khamla, Nagpur

Subject: Analysis of Students' Satisfaction Survey and Implementation of Action Plan for Enhanced Use of ICT in Teaching-Learning Pedagogy during the Session 2023-2024.

Respected Sir,

I am writing to share the insights gained from our recent Students' Satisfaction Survey, which targeted students who have completed their final year of education in various Programmes offered by our esteemed Institution. The survey was aimed to assess the effectiveness of our current Teaching-learning practices and to identify areas for improvement. One of the key findings was a significant demand for increased use of Information and Communication Technology (ICT) in our pedagogical approach.

Based on this Feedback, we have developed an action plan to enhance the use of ICT in our teaching-learning process. Below are the steps we have planned to implement:

1. Instruction to Faculty through ICT Committee:

The ICT Committee has been instructed to emphasize the importance of incorporating various ICT tools in teaching. Faculty members will receive guidance on effectively using Digital platforms, Software applications, and Online resources to enhance the learning experience.



2. Organizing Workshops and Seminars:

The Seminar and Symposia Committee has been tasked with organizing a Workshop focused on ICT in Teaching-Learning Pedagogy. We plan to invite ICT experts who can provide insights and training to our Faculty members on the latest trends and tools in ICT, ensuring they are well-equipped to integrate these technologies into their teaching methods.

3. Ensuring Syllabus Compliance:

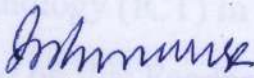
The Syllabus Compliance Committee will play a crucial role in ensuring that the use of ICT by Faculty members is systematically documented. This documentation will not only help in tracking the implementation of ICT in our curriculum but will also serve as a reference for continuous improvement.

We do believe that by taking these proactive steps, we can significantly enhance the quality of education provided by our Institution. Our commitment to integrating ICT into our Teaching-learning processes will not only cater to the evolving needs of our students but also prepare them to thrive in a technologically advanced world.

We look forward to your support and cooperation in implementing this action plan. Should you have any suggestions or require further details, please do convey.

Thank you for your attention to this matter.

Yours sincerely,



Dr. Jobi George

Principal, Bhiwapur Mahavidyalaya

PRINCIPAL
Bhiwapur Mahavidyalaya
Bhiwapur, Dist. Nagpur





Backward Class Youth Relief Committee's
BHIWAPUR MAHAVIDYALAYA

Accredited with Grade B (CGPA-2.54) by NAAC
At. Po. Th. Bhiwapur, Dist. Nagpur (MS) -441201
Email: bmv_bhiwapur@yahoo.com, bgm.college1990@gmail.com
Website :www.bmb.ac.in
Ph. No. 07106-232349 : Fax No. 07106-232064

Smt. Sumanmala B. Mulak
President

Hon. Shri Rajendra B. Mulak
Secretary

Dr. Jobi George
Principal

Ref. No.

Date 21/06/2024

Internal Communication-Bhiwapur Mahavidyalaya

21st June, 2024

To

Dr. Ashwini Kadu
Member Secretary
Seminar and Symposia Committee
Bhiwapur Mahavidyalaya

Subject: Enhanced and Compulsory use of ICT in all the Programmes organized by the Committee.

Dear Madam,

This is with reference to the findings of the Students' Satisfaction Survey analysis for 2023-2024, which states that the Feedback received from the outgoing students has a categorical mention of Faculty not utilizing ICT to the optimum in Teaching-Learning pedagogy.

Through this letter, we direct you to implement ICT in all the future Programmes being organized under your tutelage including students' presentations of Projects, Assignments and Students' Seminars. Ensure to keep a documented proof of the same.

Regards

Dr. Jobi George

Principal,

Bhiwapur Mahavidyalaya

PRINCIPAL
Bhiwapur Mahavidyalaya
Bhiwapur, Dist. Nagpur