



BACKWARD CLASS YOUTH RELIEF COMMITTEE'S
BHIWAPUR MAHAVIDYALAYA

BHIWAPUR DIST. NAGPUR- 441201
ACCREDITED WITH GRADE 'B' (CGPA-2.54) BY NAAC, BENGALURU
ISO-9001:2015

Academic Session – 2022-23
Feedback from students on Teaching Learning and Evaluation

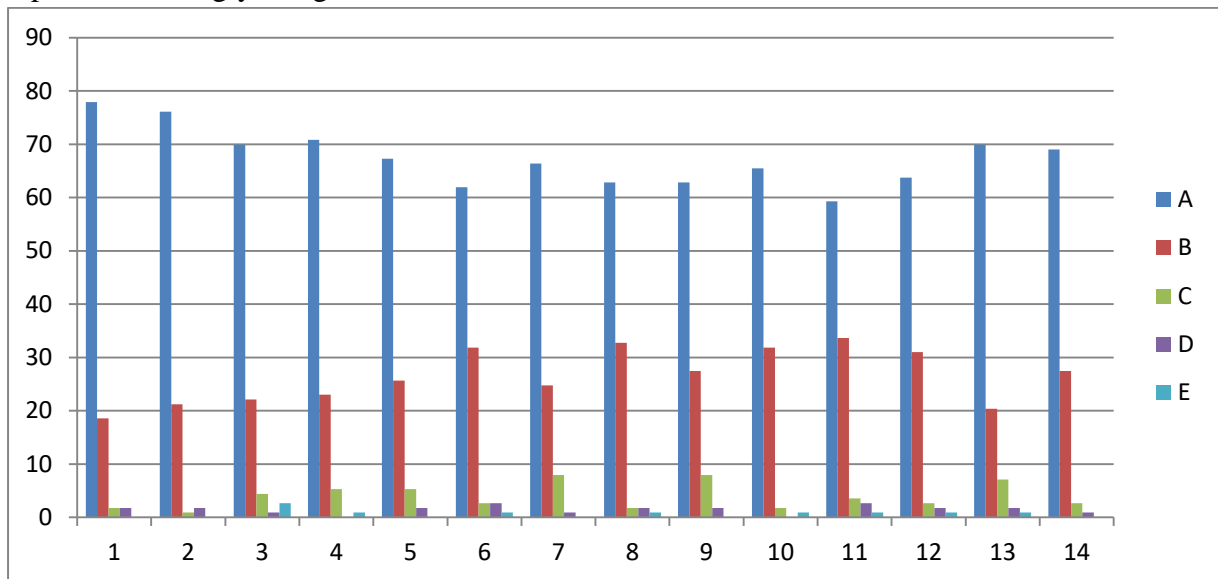
Bachelor of Science

Feedback form link- <https://forms.gle/jbaJmBpcdCJesHgPA>

Feedback Analysis

Learners have given their Responses on a 5 -point Likert Scale for-

Option A- Strongly agree-	3.369
Option B- Agree-	1.327
Option C- Neither agree nor disagree -	0.199
Option D- Disagree-	0.072
Option E- Strongly disagree-	0.031



On X-axis – Question number

On Y-axis- Response in %

- A- Strongly agree
- B- Agree
- C- Neither agree nor disagree
- D- Disagree
- E- Strongly disagree

For question 1- 78% students strongly agreed, 19% agreed, 2% neither agreed nor disagreed and 2% disagreed.

Interpretation- 78% students strongly agreed, 19% agreed, 2% neither agreed nor disagreed and 2% disagreed that they understand the depth of the course.

For question 2- 76% students strongly agreed, 21% agreed, 1% neither agreed nor disagreed and 2% disagreed.

Interpretation- 76% students strongly agreed, 21% agreed, 1% neither agreed nor disagreed and 2% disagreed that extent of coverage of course taught by teacher.

For question 3- 70% students strongly agreed, 22% agreed, 4% neither agreed nor disagreed, 1% disagreed and 3% strongly disagreed.

Interpretation- 70% students strongly agreed, 22% agreed, 4% neither agreed nor disagreed, 1% disagreed and 3% strongly disagreed that the ability of the teacher to relate the topic with current situation.

For question 4- 71% students strongly agreed, 23% agreed, 5% neither agreed nor disagreed and 1% strongly disagreed.

Interpretation- 71% students strongly agreed, 23% agreed, 5% neither agreed nor disagreed and 1% strongly disagreed that the entire syllabus is completed in the stipulated time frame.

For question 5- 67% students strongly agreed, 26% agreed, 5% neither agreed nor disagreed and 2% strongly disagreed.

Interpretation- 67% students strongly agreed, 26% agreed, 5% neither agreed nor disagreed and 2% strongly disagreed that teachers are punctual and regular in taking practical and tutorial classes.

For question 6- 62% students strongly agreed, 32% agreed, 3% neither agreed nor disagreed, 3% disagreed and 1% strongly disagreed.

Interpretation- 62% students strongly agreed, 32% agreed, 3% neither agreed nor disagreed, 3% disagreed and 1% strongly disagreed that the ICT in the form of web sources, power point presentations are a regular feature of the classroom.

For question 7- 66% students strongly agreed, 20% agreed, 10% neither agreed nor disagreed and 1% disagreed.

Interpretation- 66% students strongly agreed, 20% agreed, 10% neither agreed nor disagreed and 1% disagreed that explanation of textual reading material with clarity and relevance.

For question 8- 63% students strongly agreed, 33% agreed, 2% neither agreed nor disagreed, 2% disagreed and 1% strongly agreed.

Interpretation- 63% students strongly agreed, 33% agreed, 2% neither agreed nor disagreed, 2% disagreed and 1% strongly agreed that information regarding additional reading sources is given.

For question 9- 63% students strongly agreed, 27% agreed, 8% neither agreed nor disagreed and 1% disagreed.

Interpretation- 63% students strongly agreed, 27% agreed, 8% neither agreed nor disagreed and 1% disagreed that values are taught from the prescribed syllabus in terms of knowledge, concepts, manual skills, analytical abilities and broadening perspectives.

For question 10- 65% students strongly agreed, 32% agreed, 2% neither agreed nor disagreed and 1% strongly disagreed.

Interpretation- 65% students strongly agreed, 32% agreed, 2% neither agreed nor disagreed and 1% strongly disagreed that periodical assessments are conducted as per the given schedule.

For question 11- 59% students strongly agreed 34% agreed, 4% neither agreed nor disagreed and 3% disagreed.

Interpretation- 59% students strongly agreed 34% agreed, 4% neither agreed nor disagreed and 3% disagreed that evaluation is fair and unbiased.

For question 12- 64% students strongly agreed, 31% agreed and 3% neither agreed nor disagreed, 2% disagreed and 1% strongly disagreed.

Interpretation- 64% students strongly agreed, 31% agreed and 3% neither agreed nor disagreed, 2% disagreed and 1% strongly disagreed that regular and timely feedback is given for further improvement.

For question 13- 70% students strongly agreed, 20% agreed, 7% neither agreed nor disagreed, 2% agreed and 1% strongly disagreed.

Interpretation- 70% students strongly agreed, 20% agreed, 7% neither agreed nor disagreed, 2% agreed and 1% strongly disagreed that teachers are accessible even after lectures.

For question 14- 69% students strongly agreed 27% agreed, 3% neither agreed nor disagreed and 1% disagreed.

Interpretation- 69% students strongly agreed 27% agreed, 3% neither agreed nor disagreed and 1% disagreed that teachers are instrumental in personality development of the students.



BACKWARD CLASS YOUTH RELIEF COMMITTEE'S
BHIWAPUR MAHAVIDYALAYA

BHIWAPUR DIST. NAGPUR- 441201
ACCREDITED WITH GRADE 'B' (CGPA-2.54) BY NAAC, BENGALURU
ISO-9001:2015

Academic Session – 2022-23

Feedback from students on Teaching Learning and Evaluation

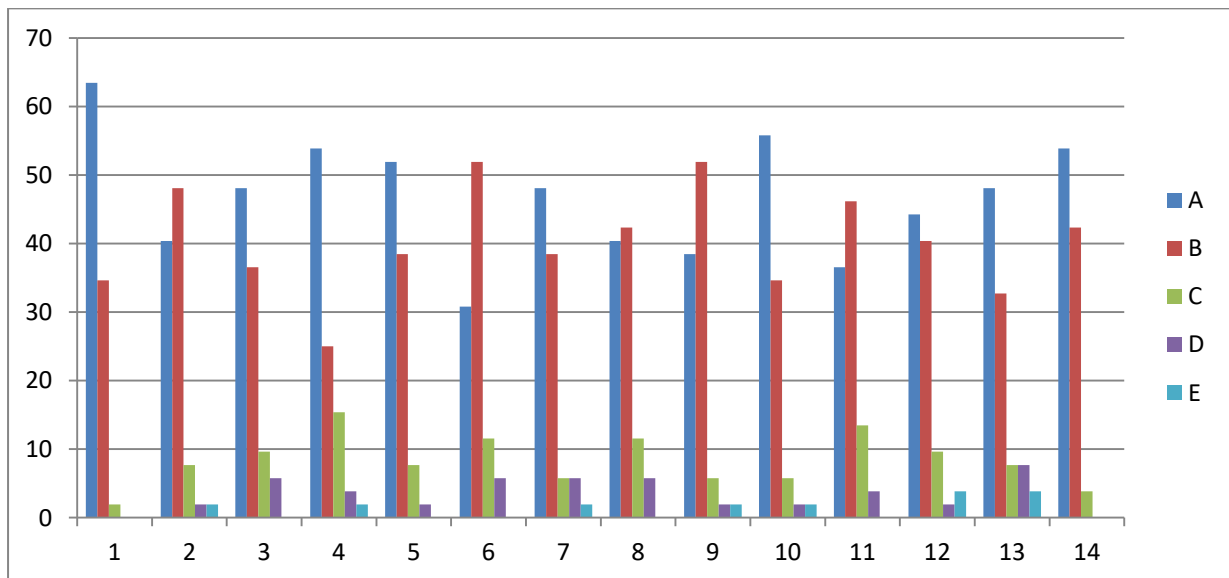
Bachelor of Commerce- I

Feedback form link- <https://forms.gle/iJ1CpqqkZB1r2Jcx39>

Feedback Analysis

Learners have given their Responses on a 5 -point Likert Scale for-

Option A- Strongly agree-	2.335
Option B- Agree-	2.012
Option C- Neither agree nor disagree -	0.418
Option D- Disagree-	0.171
Option E- Strongly disagree-	0.061



On X-axis – Question number

On Y-axis- Response in %

- A- Strongly agree
- B- Agree
- C- Neither agree nor disagree
- D- Disagree
- E- Strongly disagree

For question 1 – 63% students strongly agreed, 35% agreed and 2% neither agreed nor disagreed.

Interpretation- 63% students strongly agreed, 35% agreed and 2% neither agreed nor disagreed that they understand the depth of the course.

For question 2- 40% students strongly agreed, 48% agreed, 8% neither agreed nor disagreed, 2% disagreed and 2% strongly disagreed.

Interpretation- 40% students strongly agreed, 48% agreed, 8% neither agreed nor disagreed, 2% disagreed and 2% strongly disagreed that extent of coverage of course taught by teacher.

For question 3- 48% students strongly agreed, 37% agreed, 10% neither agreed nor disagreed and 6% disagreed.

Interpretation- 48% students strongly agreed, 37% agreed, 10% neither agreed nor disagreed and 6% disagreed that the ability of the teacher to relate the topic with current situation.

For question 4- 54% students strongly agreed, 25% agreed, 15% neither agreed nor disagreed, 4% disagreed and 2% strongly disagreed.

Interpretation- 54% students strongly agreed, 25% agreed, 15% neither agreed nor disagreed, 4% disagreed and 2% strongly disagreed that the entire syllabus is completed in the stipulated time frame.

For question 5- 52% students strongly agreed, 28% agreed, 8% neither agreed nor disagreed and 2% disagreed.

Interpretation- 52% students strongly agreed, 28% agreed, 8% neither agreed nor disagreed and 2% disagreed that teachers are punctual and regular in taking practical and tutorial classes.

For question 6- 31% students strongly agreed, 52% agreed, 11% neither agreed nor disagreed and 6% disagreed.

Interpretation- 31% students strongly agreed, 52% agreed, 11% neither agreed nor disagreed and 6% disagreed that the ICT in the form of web sources, power point presentations are a regular feature of the classroom.

For question 7- 48% students strongly agreed, 38% agreed, 6% neither agreed nor disagreed, 6% disagreed and 2% strongly disagreed.

Interpretation- 48% students strongly agreed, 38% agreed, 6% neither agreed nor disagreed, 6% disagreed and 2% strongly disagreed that explanation of textual reading material with clarity and relevance.

For question 8- 40% students strongly agreed, 42% agreed, 12% neither agreed nor disagreed and 6% disagreed.

Interpretation- 40% students strongly agreed, 42% agreed, 12% neither agreed nor disagreed and 6% disagreed that information regarding additional reading sources is given.

For question 9- 38% students strongly agreed, 52% agreed, 6% neither agreed nor disagreed, 2% disagreed and 2% strongly disagreed.

Interpretation- 38% students strongly agreed, 52% agreed, 6% neither agreed nor disagreed, 2% disagreed and 2% strongly disagreed that values are taught from the prescribed syllabus in terms of knowledge, concepts, manual skills, analytical abilities and broadening perspectives.

For question 10- 56% students strongly agreed, 35% agreed, 6% neither agreed nor disagreed, 2% disagreed and 2% strongly disagreed.

Interpretation- 56% students strongly agreed, 35% agreed, 6% neither agreed nor disagreed, 2% disagreed and 2% strongly disagreed that periodical assessments are conducted as per the given schedule.

For question 11- 37% students strongly agreed, 46% agreed, 13% neither agreed nor disagreed and 4% disagreed.

Interpretation- 37% students strongly agreed, 46% agreed, 13% neither agreed nor disagreed and 4% disagreed that evaluation is fair and unbiased.

For question 12- 44% students strongly agreed, 40% agreed, 10% neither agreed nor disagreed, 2% disagreed and 4% strongly disagreed.

Interpretation- 44% students strongly agreed, 40% agreed, 10% neither agreed nor disagreed, 2% disagreed and 4% strongly disagreed that regular and timely feedback is given for further improvement.

For question 13- 48% students strongly agreed, 33% agreed, 8% neither agreed nor disagreed, 8% disagreed and 4% strongly disagreed.

Interpretation- 48% students strongly agreed, 33% agreed, 8% neither agreed nor disagreed, 8% disagreed and 4% strongly disagreed that teachers are accessible even after lectures.

For question 14- 54% students strongly agreed, 42% agreed and 4% neither agreed nor disagreed.

Interpretation- 54% students strongly agreed, 42% agreed and 4% neither agreed nor disagreed that teachers are instrumental in personality development of the students.



BACKWARD CLASS YOUTH RELIEF COMMITTEE'S
BHIWAPUR MAHAVIDYALAYA

BHIWAPUR DIST. NAGPUR- 441201
ACCREDITED WITH GRADE 'B' (CGPA-2.54) BY NAAC, BENGALURU
ISO-9001:2015

Academic Session – 2022-23

Feedback from students on Teaching Learning and Evaluation

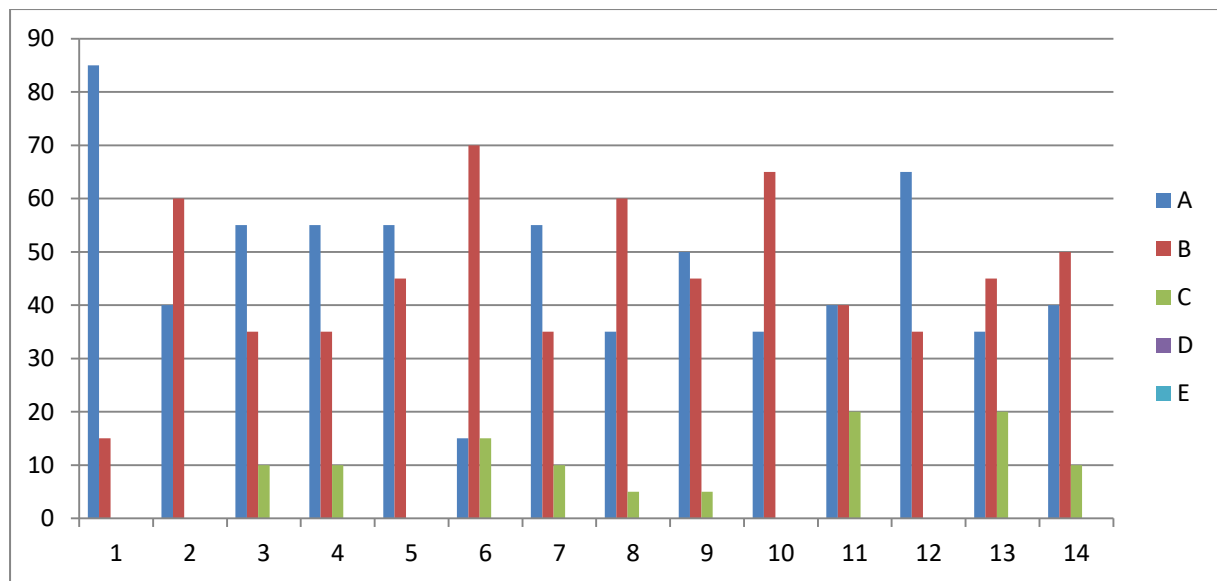
Bachelor of Commerce-II

Feedback form link- <https://forms.gle/8YGxb3aUiGDtx7fQ6>

Feedback Analysis

Learners have given their Responses on a 5 -point Likert Scale for-

Option A- Strongly agree-	2.36
Option B- Agree-	2.27
Option C- Neither agree nor disagree -	0.37
Option D- Disagree-	0.00
Option E- Strongly disagree-	0.00



On X-axis – Question number

On Y-axis- Response in %

- A- Strongly agree
- B- Agree
- C- Neither agree nor disagree
- D- Disagree
- E- Strongly disagree

For question 1 – 85% students strongly agreed and 15% agreed.

Interpretation- 85% students strongly agreed and 15% agreed that they understand the depth of the course.

For question 2- 40% students strongly agreed and 60% agreed.

Interpretation- 40% students strongly agreed and 60% agreed that extent of coverage of course taught by teacher.

For question 3- 55% students strongly agreed, 35% agreed and 10% neither agreed nor disagreed.

Interpretation- 55% students strongly agreed, 35% agreed and 10% neither agreed nor disagreed that the ability of the teacher to relate the topic with current situation.

For question 4- 55% students strongly agreed, 35% agreed and 10% neither agreed nor disagreed.

Interpretation- 55% students strongly agreed, 35% agreed and 10% neither agreed nor disagreed that the entire syllabus is completed in the stipulated time frame.

For question 5- 55% students strongly agreed and 45% agreed.

Interpretation- 55% students strongly agreed and 45% agreed that teachers are punctual and regular in taking practical and tutorial classes.

For question 6- 15% students strongly agreed, 70% agreed and 15% neither agreed nor disagreed.

Interpretation- 15% students strongly agreed, 70% agreed and 15% neither agreed nor disagreed that the ICT in the form of web sources, power point presentations are a regular feature of the classroom.

For question 7- 55% students strongly agreed, 35% agreed and 10% neither agreed nor disagreed.

Interpretation- 55% students strongly agreed, 35% agreed and 10% neither agreed nor disagreed that explanation of textual reading material with clarity and relevance

For question 8- 35% students strongly agreed, 60% agreed and 5% neither agreed nor disagreed.

Interpretation- 35% students strongly agreed, 60% agreed and 5% neither agreed nor disagreed that information regarding additional reading sources is given.

For question 9- 50% students strongly agreed, 45% agreed and 5% neither agreed nor disagreed.

Interpretation- 50% students strongly agreed, 45% agreed and 5% neither agreed nor disagreed that values are taught from the prescribed syllabus in terms of knowledge, concepts, manual skills, analytical abilities and broadening perspectives.

For question 10- 35% students strongly agreed and 65% agreed.

Interpretation- 35% students strongly agreed and 65% agreed that Periodical assessments are conducted as per the given schedule.

For question 11- 40% students strongly agreed, 40% agreed and 20% neither agreed nor disagreed.

Interpretation- 40% students strongly agreed, 40% agreed and 20% neither agreed nor disagreed that evaluation is fair and unbiased.

For question 12- 65% students strongly agreed and 35% agreed.

Interpretation- 65% students strongly agreed and 35% agreed that regular and timely feedback is given for further improvement.

For question 13- 35% students strongly agreed, 45% agreed and 20% neither agreed nor disagreed.

Interpretation- 35% students strongly agreed, 45% agreed and 20% neither agreed nor disagreed that teachers are accessible even after lectures.

For question 14- 40% students strongly agreed 50% agreed and 10% neither agreed nor disagreed.

Interpretation- 40% students strongly agreed 50% agreed and 10% neither agreed nor disagreed that teachers are instrumental in personality development of the students.



BACKWARD CLASS YOUTH RELIEF COMMITTEE'S
BHIWAPUR MAHAVIDYALAYA

BHIWAPUR DIST. NAGPUR- 441201
ACCREDITED WITH GRADE 'B' (CGPA-2.54) BY NAAC, BENGALURU
ISO-9001:2015

Academic Session – 2022-23

Feedback from students on Teaching Learning and Evaluation

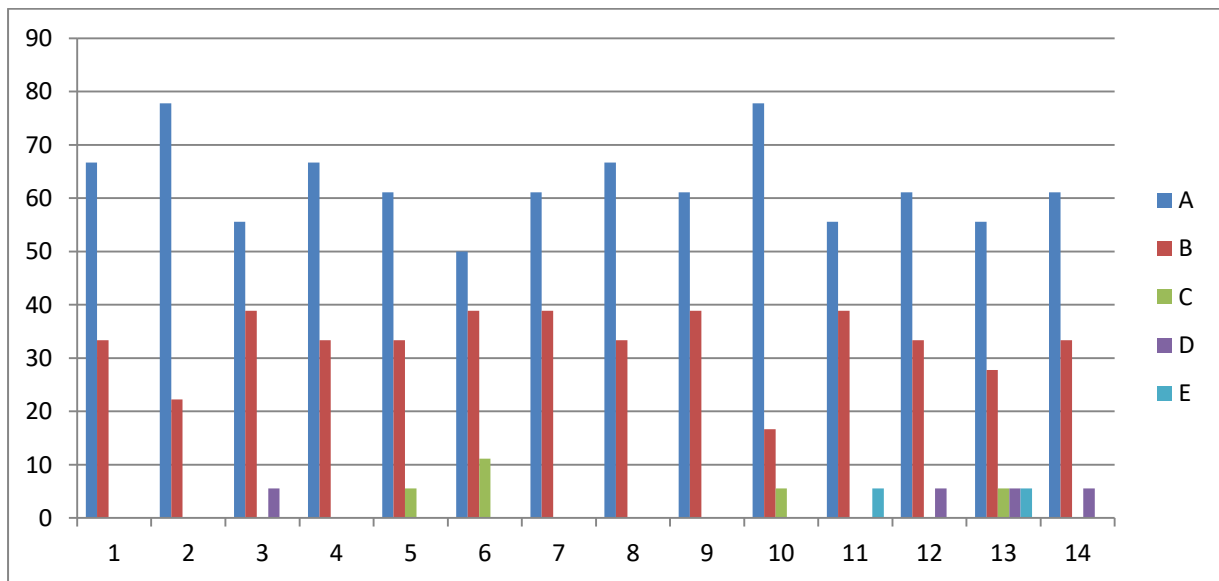
Bachelor of Commerce- III

Feedback form link- <https://forms.gle/XvYqTLd4i3febubG9>

Feedback Analysis

Learners have given their Responses on a 5 -point Likert Scale for-

Option A- Strongly agree-	3.134
Option B- Agree-	1.646
Option C- Neither agree nor disagree -	0.099
Option D- Disagree-	0.079
Option E- Strongly disagree-	0.039



On X-axis – Question number

On Y-axis- Response in %

- A- Strongly agree
- B- Agree
- C- Neither agree nor disagree
- D- Disagree
- E- Strongly disagree

For question 1 – 67% students strongly agreed and 33% agreed.

Interpretation- 67% students strongly agreed and 33% agreed they understand the depth of the course.

For question 2- 78% students strongly agreed and 22% agreed.

Interpretation- 78% students strongly agreed and 22% agreed that extent of coverage of course taught by teacher.

For question 3- 56% students strongly agreed, 39% students strongly agreed and 6% disagreed.

Interpretation- 56% students strongly agreed, 39% students strongly agreed and 6% disagreed that the ability of the teacher to relate the topic with current situation.

For question 4- 67% students strongly agreed and 33% agreed.

Interpretation- 67% students strongly agreed and 33% agreed that the entire syllabus is completed in the stipulated time frame.

For question 5- 61% students strongly agreed, 33% agreed and 6% neither agreed nor disagreed.

Interpretation- 61% students strongly agreed, 33% agreed and 6% neither agreed nor disagreed that teachers are punctual and regular in taking practical and tutorial classes.

For question 6- 50% students strongly agreed, 39% agreed and 11% neither agreed nor disagreed.

Interpretation- 50% students strongly agreed, 39% agreed and 11% neither agreed nor disagreed that the ICT in the form of web sources, power point presentations are a regular feature of the classroom.

For question 7- 61% students strongly agreed and 39% agreed.

Interpretation- 61% students strongly agreed and 39% agreed that explanation of textual reading material with clarity and relevance

For question 8- 67% students strongly agreed and 33% agreed.

Interpretation- 67% students strongly agreed and 33% agreed that information regarding additional reading sources is given.

For question 9- 61% students strongly agreed and 39% agreed.

Interpretation- 61% students strongly agreed and 39% agreed that values are taught from the prescribed syllabus in terms of knowledge, concepts, manual skills, analytical abilities and broadening perspectives.

For question 10- 78% students strongly agreed, 17% agreed and 6% neither agreed nor disagreed.

Interpretation- 78% students strongly agreed, 17% agreed and 6% neither agreed nor disagreed that periodical assessments are conducted as per the given schedule.

For question 11- 56% students strongly agreed, 39% agreed and 5% strongly disagreed.

Interpretation- 56% students strongly agreed, 39% agreed and 5% strongly disagreed that evaluation is fair and unbiased.

For question 12- 61% students strongly agreed, 33% agreed and 6% disagreed.

Interpretation- 61% students strongly agreed, 33% agreed and 6% disagreed that regular and timely feedback is given for further improvement.

For question 13- 55% students strongly agreed, 28% agreed, 6% neither agreed nor disagreed, 6% disagreed and 5% strongly disagreed.

Interpretation- 55% students strongly agreed, 28% agreed, 6% neither agreed nor disagreed, 6% disagreed and 5% strongly disagreed that teachers are accessible even after lectures.

For question 14- 61% students strongly agreed, 33% agreed and 6% disagreed.

Interpretation- 61% students strongly agreed, 33% agreed and 6% disagreed that teachers are instrumental in personality development of the students.



BACKWARD CLASS YOUTH RELIEF COMMITTEE'S
BHIWAPUR MAHAVIDYALAYA

BHIWAPUR DIST. NAGPUR- 441201
ACCREDITED WITH GRADE 'B' (CGPA-2.54) BY NAAC, BENGALURU
ISO-9001:2015

Academic Session – 2022-23

Feedback from students on Teaching Learning and Evaluation

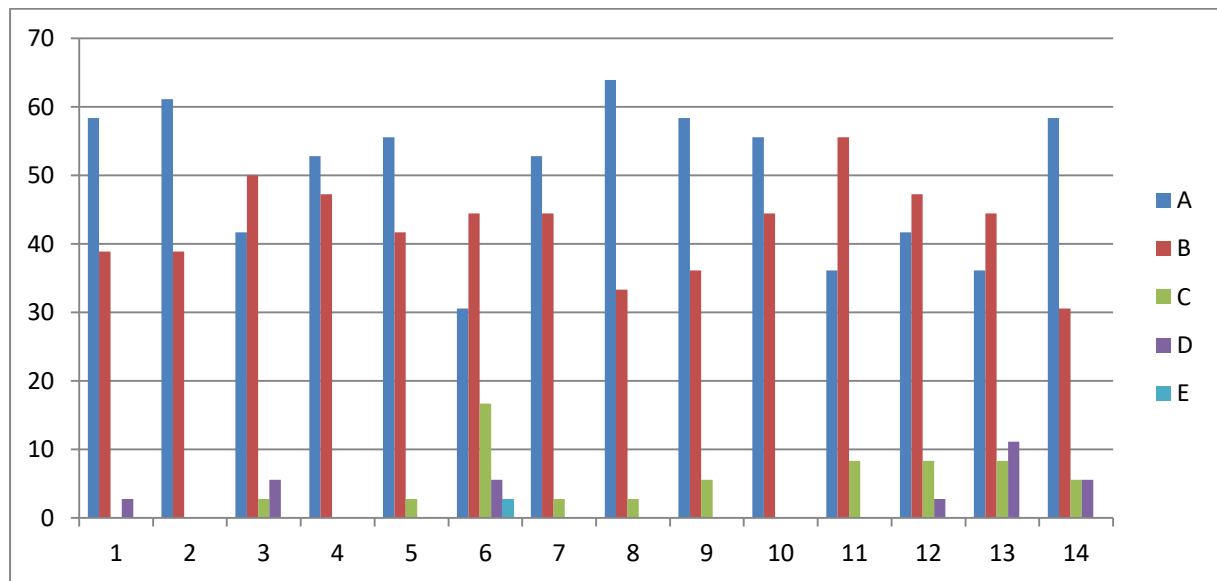
Bachelor of Arts

Feedback Form link- <https://forms.gle/axv9wL2JZVoP2JxG7>

Feedback Analysis

Learners have given their Responses on a 5 -point Likert Scale for-

Option A- Strongly agree-	2.509
Option B- Agree-	2.132
Option C- Neither agree nor disagree -	0.228
Option D- Disagree-	0.119
Option E- Strongly disagree-	0.009



On X-axis – Question number

On Y-axis- Response in %

- A- Strongly agree
- B- Agree
- C- Neither agree nor disagree
- D- Disagree
- E- Strongly disagree

For question 1 – 58% students strongly agreed, 39% agreed and 3% disagreed.

Interpretation- 58% students strongly agreed, 39% agreed and 3% disagreed that they understand the depth of the course.

For question 2- 61% students strongly agreed and 38% agreed.

Interpretation- 61% students strongly agreed and 38% agreed that extent of coverage of course taught by teacher.

For question 3- 42% students strongly agreed, 50% agreed, 3% neither agreed nor disagreed and 5% disagreed.

Interpretation- 42% students strongly agreed, 50% agreed, 3% neither agreed nor disagreed and 5% disagreed that the ability of the teacher to relate the topic with current situation.

For question 4- 53% students strongly agreed and 47% agreed.

Interpretation- 53% students strongly agreed and 47% agreed that the entire syllabus is completed in the stipulated time frame.

For question 5- 56% students strongly agreed, 42% agreed and 3%.

Interpretation- 56% students strongly agreed, 42% agreed and 3% that teachers are punctual and regular in taking practical and tutorial classes.

For question 6- 31% students strongly agreed, 44% agreed, 17% neither agreed nor disagreed, 6% disagreed and 3% strongly disagreed.

Interpretation- 31% students strongly agreed, 44% agreed, 17% neither agreed nor disagreed, 6% disagreed and 3% strongly disagreed that the ICT in the form of web sources, power point presentations are a regular feature of the classroom.

For question 7- 53% students strongly agreed, 44% agreed and 20% neither agreed nor disagreed.

Interpretation- 53% students strongly agreed, 44% agreed and 20% neither agreed nor disagreed that explanation of textual reading material with clarity and relevance

For question 8- 64% students strongly agreed, 33% agreed and 3% neither agreed nor disagreed.

Interpretation- 64% students strongly agreed, 33% agreed and 3% neither agreed nor disagreed that information regarding additional reading sources is given.

For question 9- 58% students strongly agreed, 36% agreed and 6% neither agreed nor disagreed.

Interpretation- 58% students strongly agreed, 36% agreed and 6% neither agreed nor disagreed that values are taught from the prescribed syllabus in terms of knowledge, concepts, manual skills, analytical abilities and broadening perspectives.

For question 10- 56% students strongly agreed and 44% agreed.

Interpretation- 56% students strongly agreed and 44% agreed that periodical assessments are conducted as per the given schedule.

For question 11- 36% students strongly agreed, 56% agreed and 8% neither agreed nor disagreed.

Interpretation- 36% students strongly agreed, 56% agreed and 8% neither agreed nor disagreed that evaluation is fair and unbiased.

For question 12- 42% students strongly agreed, 47% agreed, 8% neither agreed nor disagreed and 3% disagreed.

Interpretation- 42% students strongly agreed, 47% agreed, 8% neither agreed nor disagreed and 3% disagreed that regular and timely feedback is given for further improvement.

For question 13- 36% students strongly agreed, 44% agreed, 8% neither agreed nor disagreed and 11% disagreed.

Interpretation- 36% students strongly agreed, 44% agreed, 8% neither agreed nor disagreed and 11% disagreed that teachers are accessible even after lectures.

For question 14- 58% students strongly agreed, 31% agreed, 6% neither agreed nor disagreed and 5% disagreed.

Interpretation- 58% students strongly agreed, 31% agreed, 6% neither agreed nor disagreed and 5% disagreed that teachers are instrumental in personality development of the students.



BACKWARD CLASS YOUTH RELIEF COMMITTEE'S

BHIWAPUR MAHAVIDYALAYA

BHIWAPUR DIST. NAGPUR- 441201

ACCREDITED WITH GRADE 'B' (CGPA-2.54) BY NAAC, BENGALURU

ISO-9001:2015

Academic Session – 2022-23

Feedback from students on Teaching Learning and Evaluation

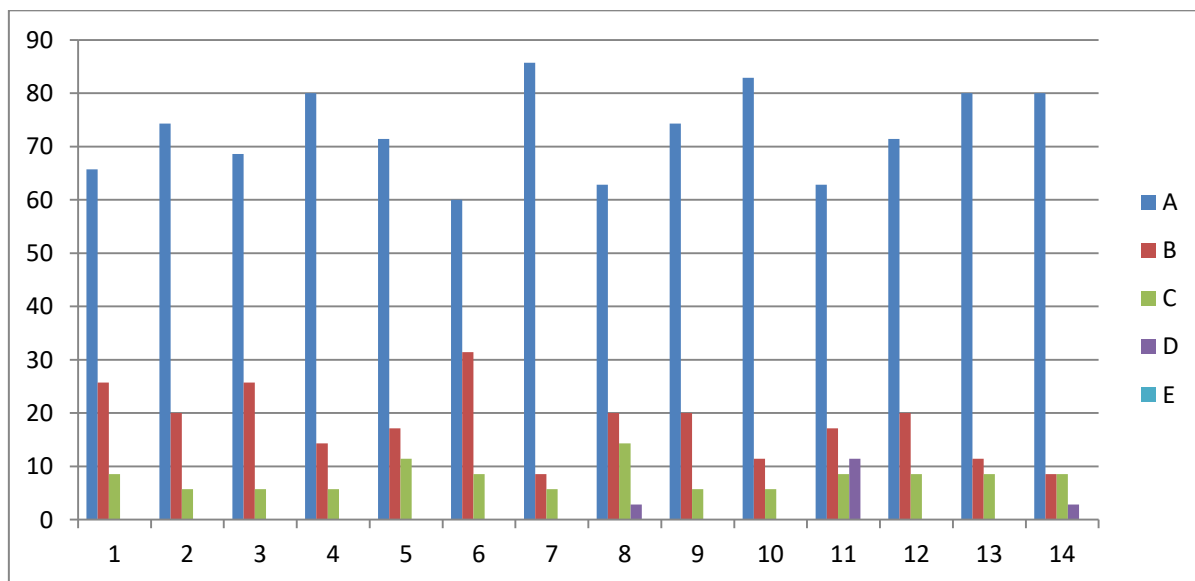
Bachelor of Vocation

Feedback form link- <https://forms.gle/UdpxJb2awQeUiWdUA>

Feedback Analysis

Learners have given their Responses on a 5 -point Likert Scale for-

Option A- Strongly agree-	3.64
Option B- Agree-	1.90
Option C- Neither agree nor disagree -	0.40
Option D- Disagree-	0.06
Option E- Strongly disagree-	0.00



On X-axis – Question number

On Y-axis- Response in %

- A- Strongly agree
- B- Agree
- C- Neither agree nor disagree
- D- Disagree
- E- Strongly disagree

For question 1 – 66% students strongly agreed, 26% agreed and 8% neither agreed nor disagreed.

Interpretation- 66% students strongly agreed, 26% agreed and 8% neither agreed nor disagreed that they understand the depth of the course.

For question 2- 74% students strongly agreed, 20% agreed and 6% neither agreed nor disagreed.

Interpretation- 74% students strongly agreed, 20% agreed and 6% neither agreed nor disagreed that extent of coverage of course taught by teacher.

For question 3- 69% students strongly agreed, 26% agreed and 6% neither agreed nor disagreed.

Interpretation- 69% students strongly agreed, 26% agreed and 6% neither agreed nor disagreed that the ability of the teacher to relate the topic with current situation.

For question 4- 80% students strongly agreed, 14% agreed and 6% neither agreed nor disagreed.

Interpretation- 80% students strongly agreed, 14% agreed and 6% neither agreed nor disagreed that the entire syllabus is completed in the stipulated time frame.

For question 5- 71% students strongly agreed, 17% agreed and 12% neither agreed nor disagreed.

Interpretation- 71% students strongly agreed, 17% agreed and 12% neither agreed nor disagreed that teachers are punctual and regular in taking practical and tutorial classes.

For question 6- 60% students strongly agreed, 31% agreed and 9% neither agreed nor disagreed.

Interpretation- 60% students strongly agreed, 31% agreed and 9% neither agreed nor disagreed that the ICT in the form of web sources, power point presentations are a regular feature of the classroom.

For question 7- 86% students strongly agreed, 8% agreed and 6% neither agreed nor disagreed.

Interpretation- 86% students strongly agreed, 8% agreed and 6% neither agreed nor disagreed that explanation of textual reading material with clarity and relevance

For question 8- 63% students strongly agreed, 20% agreed, 14% neither agreed nor disagreed and 3% disagreed.

Interpretation- 63% students strongly agreed, 20% agreed, 14% neither agreed nor disagreed and 3% disagreed that information regarding additional reading sources is given.

For question 9- 74% students strongly agreed, 20% agreed and 6% neither agreed nor disagreed.

Interpretation- 74% students strongly agreed, 20% agreed and 6% neither agreed nor disagreed that values are taught from the prescribed syllabus in terms of knowledge, concepts, manual skills, analytical abilities and broadening perspectives.

For question 10- 83% students strongly agreed, 11% agreed and 8% neither agreed nor disagreed.

Interpretation- 83% students strongly agreed, 11% agreed and 8% neither agreed nor disagreed that periodical assessments are conducted as per the given schedule.

For question 11- 63% students strongly agreed, 17% agreed, 9% neither agreed nor disagreed and 11% disagreed.

Interpretation- 63% students strongly agreed, 17% agreed, 9% neither agreed nor disagreed and 11% disagreed that evaluation is fair and unbiased.

For question 12- 71% students strongly agreed, 20% agreed and 9% neither agreed nor disagreed.

Interpretation- 71% students strongly agreed, 20% agreed and 9% neither agreed nor disagreed that regular and timely feedback is given for further improvement.

For question 13- 80% students strongly agreed, 11% agreed and 9% neither agreed nor disagreed.

Interpretation- 80% students strongly agreed, 11% agreed and 9% neither agreed nor disagreed that teachers are accessible even after lectures.

For question 14- 80% students strongly agreed, 9% agreed, 8% neither agreed nor disagreed and 3% disagreed.

Interpretation- 80% students strongly agreed, 9% agreed, 8% neither agreed nor disagreed and 3% disagreed that teachers are instrumental in personality development of the students.



BACKWARD CLASS YOUTH RELIEF COMMITTEE'S
BHIWAPUR MAHAVIDYALAYA

BHIWAPUR DIST. NAGPUR- 441201
ACCREDITED WITH GRADE 'B' (CGPA-2.54) BY NAAC, BENGALURU
ISO-9001:2015

Academic Session – 2022-23

Feedback from students on Teaching Learning and Evaluation

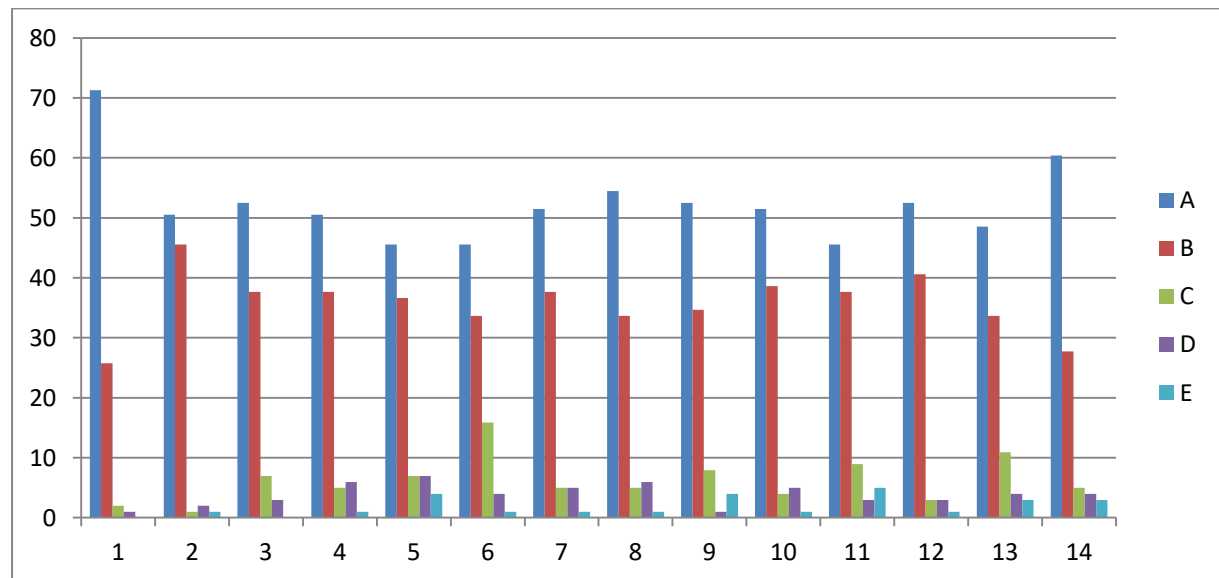
Master of Arts-I

Feedback form link- <https://forms.gle/N2anJNmGX2SZNG6t5>

Feedback Analysis

Learners have given their Responses on a 5 -point Likert Scale for-

Option A- Strongly agree-	2.616
Option B- Agree-	1.789
Option C- Neither agree nor disagree -	0.311
Option D- Disagree-	0.190
Option E- Strongly disagree-	0.091



On X-axis – Question number

On Y-axis- Response in %

- A- Strongly agree
- B- Agree
- C- Neither agree nor disagree
- D- Disagree
- E- Strongly disagree

For question 1 – 71% students strongly agreed, 26% agreed, 1% neither agreed nor disagreed and 26% disagreed.

Interpretation- 71% students strongly agreed, 26% agreed, 1% neither agreed nor disagreed and 26% disagreed that they understand the depth of the course.

For question 2- 50% students strongly agreed, 45% agreed, 1% neither agreed nor disagreed, 2% disagreed and 1% strongly disagreed.

Interpretation- 50% students strongly agreed, 45% agreed, 1% neither agreed nor disagreed, 2% disagreed and 1% strongly disagreed that extent of coverage of course taught by teacher.

For question 3- 52% students strongly agreed, 38% agreed, 7% neither agreed nor disagreed and 3% disagreed.

Interpretation- 52% students strongly agreed, 38% agreed, 7% neither agreed nor disagreed and 3% disagreed that the ability of the teacher to relate the topic with current situation.

For question 4- 50% students strongly agreed, 38% agreed, 5% neither agreed nor disagreed, 6% disagreed and 1% strongly disagreed.

Interpretation- 50% students strongly agreed, 38% agreed, 5% neither agreed nor disagreed, 6% disagreed and 1% strongly disagreed that the entire syllabus is completed in the stipulated time frame.

For question 5- 45% students strongly agreed, 37% agreed, 7% neither agreed nor disagreed, 7% disagreed and 4% strongly disagreed.

Interpretation- 45% students strongly agreed, 37% agreed, 7% neither agreed nor disagreed, 7% disagreed and 4% strongly disagreed that teachers are punctual and regular in taking practical and tutorial classes.

For question 6- 45% students strongly agreed, 34% agreed, 16% neither agreed nor disagreed, 4% disagreed and 1% strongly disagreed.

Interpretation- 45% students strongly agreed, 34% agreed, 16% neither agreed nor disagreed, 4% disagreed and 1% strongly disagreed that the ICT in the form of web sources, power point presentations are a regular feature of the classroom.

For question 7- 51% students strongly agreed, 38% agreed, 5% neither agreed nor disagreed, 5% disagreed and 1% strongly disagreed.

Interpretation- 51% students strongly agreed, 38% agreed, 5% neither agreed nor disagreed, 5% disagreed and 1% strongly disagreed that explanation of textual reading material with clarity and relevance.

For question 8- 54% students strongly agreed, 34% agreed, 5% neither agreed nor disagreed, 6% disagreed and 1% strongly disagreed.

Interpretation- 54% students strongly agreed, 34% agreed, 5% neither agreed nor disagreed, 6% disagreed and 1% strongly disagreed that information regarding additional reading sources is given.

For question 9- 52% students strongly agreed, 35% agreed, 8% neither agreed nor disagreed, 1% disagreed and 4% strongly disagreed.

Interpretation- 52% students strongly agreed, 35% agreed, 8% neither agreed nor disagreed, 1% disagreed and 4% strongly disagreed that values are taught from the prescribed syllabus in terms of knowledge, concepts, manual skills, analytical abilities and broadening perspectives.

For question 10- 51% students strongly agreed, 39% agreed, 4% neither agreed nor disagreed, 5% disagreed and 1% strongly disagreed.

Interpretation- 51% students strongly agreed, 39% agreed, 4% neither agreed nor disagreed, 5% disagreed and 1% strongly disagreed that periodical assessments are conducted as per the given schedule.

For question 11- 45% students strongly agreed, 38% agreed, 9% neither agreed nor disagreed, 3% disagreed and 5% strongly disagreed.

Interpretation- 45% students strongly agreed, 38% agreed, 9% neither agreed nor disagreed, 3% disagreed and 5% strongly disagreed that evaluation is fair and unbiased.

For question 12- 52% students strongly agreed, 41% agreed, 3% neither agreed nor disagreed, 3% disagreed and 1% strongly disagreed.

Interpretation- 52% students strongly agreed, 41% agreed, 3% neither agreed nor disagreed, 3% disagreed and 1% strongly disagreed that regular and timely feedback is given for further improvement.

For question 13- 48% students strongly agreed, 34% agreed, 11% neither agreed nor disagreed, 4% disagreed and 3% strongly disagreed.

Interpretation- 48% students strongly agreed, 34% agreed, 11% neither agreed nor disagreed, 4% disagreed and 3% strongly disagreed that teachers are accessible even after lectures.

For question 14- 60% students strongly agreed, 28% agreed and 5% neither agreed nor disagreed, 4% disagreed and 3% strongly disagreed.

Interpretation- 60% students strongly agreed, 28% agreed and 5% neither agreed nor disagreed, 4% disagreed and 3% strongly disagreed that teachers are instrumental in personality development of the students.

Prepared and submitted by –
Asst. Prof. Amit S. Thakare
Member Secretary, Feedback Committee

Appendix-I

Specimen Feedback Form



BHIWAPUR MAHAVIDYALAYA, BHIWAPUR

('B' Grade with 2.54 CGPA by NAAC Bengaluru)

Feedback of students for Teachers

Based on Self-Regulated Responsibilities

Under

Internal Quality Assurance Mechanism aims at Continuous Improvement for Academic Excellence and Result

Session: 2022 - 2023

Name of the Teacher: _____

Name of the student: _____

Semester: _____

Department: _____

Kindly rate the performance on the following attributes on five point scale

A (5.0)	B (4.0)	C (3.0)	D (2.0)	E (1.0)
Strongly Agree पूर्णपणे सहमत	Agree सहमत	Neither Agree - Nor Disagree ना सहमत - ना सहमत	Disagree असहमत	Strongly Disagree पूर्णपणे असहमत

S. No.	Attributes	Marks				
		A	B	C	D	E
1	Understanding the depth of the course content including project work if any विषयाबाबत शिक्षकाचे आकलन (असल्यास प्रकल्प कार्यासह)					
2	Extent of coverage of course taught by the teacher शिकविल्या जाणाऱ्या विषयाचे शिक्षकाकडून केले जाणारे विस्तारीकरण					
3	Ability of the teacher to relate the topic with current situations अभ्यासक्रमाची वर्तमानातील परिस्थितीशी सांगड घालण्याची शिक्षकाची क्षमता					
4	The entire syllabus is completed in the stipulated time frame अभ्यासक्रम ठरावीक कालावधित पूर्ण केला जातो					
5	Teacher are punctual and regular in taking lectures] practical and tutorial classes नियमित वर्ग, प्रात्याक्षीक आणि प्रशिक्षण वर्ग नियमित घेण्यासंदर्भात शिक्षकांची प्रामाणीकता.					
6	ICT in the form of web sources, power point presentations are a regular feature of the classroom teaching महिती संसुचन तंत्रज्ञान, पॉवर पॉईंट सादरीकरण हे नियमित वर्गात शिकविण्याच्या पध्दतीचे वैशिष्ट्ये आहे.					
7	Explanation of textual reading material with clarity and relevance शिवितांना पाठ्यक्रमावर आधारीत क्रमिक पुस्तकांचे स्पष्टपणे आणि प्रासंगीकतेनुसार स्पष्टीकरण दिले जाते.					
8	Information regarding additional reading sources is given पाठ्यक्रमावर आधारीत क्रमिक पुस्तकांव्यतिरिक्त अभ्यासाच्या इतर स्रोतांची माहिती वर्गात दिली जाते.					
9	Values are taught from the prescribed syllabus in terms of knowledge, concepts, manual skills, analytical abilities and broadening perspectives. नियोजित अभ्यासक्रमातून ज्ञान, संकल्पना, मानवी कौशल्य, विश्लेषणात्मक योग्यता आणि व्यापक दृष्टीकोन ह्यासंदर्भात मुल्ये शिकविली/रुजविली जातात.					

10	Periodical assessment are conducted as per the given schedule ठरवून दिलेल्या वेळापत्रकानुसार मुल्यांकनाचे कार्य केले जाते.					
11	Evaluation is fair and unbiased मुल्यांकन निरपेक्ष आणि निरपवादपणे केले जाते.					
12	Regular and timely feedback is given for further improvement भविष्यात करावयाच्या सुधारणांसाठी नियमित व वेळेवर अभिप्राय दिले जातात					
13	Teachers are accessible even after lectures वर्गाबाहेरही शिक्षक सहज उपलब्ध असतात.					
14	Teachers are instrumental in personality development of the students विद्यार्थ्यांच्या व्यक्तिमत्व विकासाच्या दृष्टीने शिक्षक सतत प्रयत्नशिल असतात.					
15	Suggestions if any सुचना (असल्यास)					

Signature

Appendix –II

Sample

Appreciation Letter

Dear Asst. Prof. / Assoc. Prof. Dr... ..

(B.A. / B.Com./B.Sc./MA Sociology / MA Economics/ MA Political Science)

As a valued member of our team, on behalf of the Management, I, Principal Dr. Jobi George would like to take this opportunity to thank you for your hard work and dedication noticeable to us through the feedback given by the students of Bhiwapur Mahavidyalaya.

You have stood out as an employee who has never wavered in your commitment to excellence. I admire your strong work ethic and personal integrity.

In particular, I would like to thank you for the feedback received from the students on Teaching – Learning pedagogy. Employees like you make work the assigned all the more rewarding and enjoyable. We wish you to continue with the good work for the benefit of the students and nation at large.

Sincerely,

Sample

Advisory Letter

Dear Asst. Prof. / Assoc. Prof. Dr... ..

As a valued member of our team, on behalf of the Management, I, Principal Dr. Jobi George would like to take this opportunity to bring to your notice the results of the feedback given by the students on Teaching – Learning Pedagogy. We appreciate your dedication to work but would want you to introspect in terms of the feedback given.

You have always been sincere and stood out as an employee who has never wavered in commitment to excellence. We hope you extend your support in achieving the Institution's Vision, Mission, Core Values and Quality Policy with a changed methodology in catering to students' needs.

We believe in your commitments towards work and we wish your contribution to the good work for the benefit of the students and nation at large.

Sincerely,



BACKWARD CLASS YOUTH RELIEF COMMITTEE'S
BHIWAPUR MAHAVIDYALAYA

BHIWAPUR DIST. NAGPUR- 441201
ACCREDITED WITH GRADE 'B' (CGPA-2.54) BY NAAC, BENGALURU
ISO-9001:2015

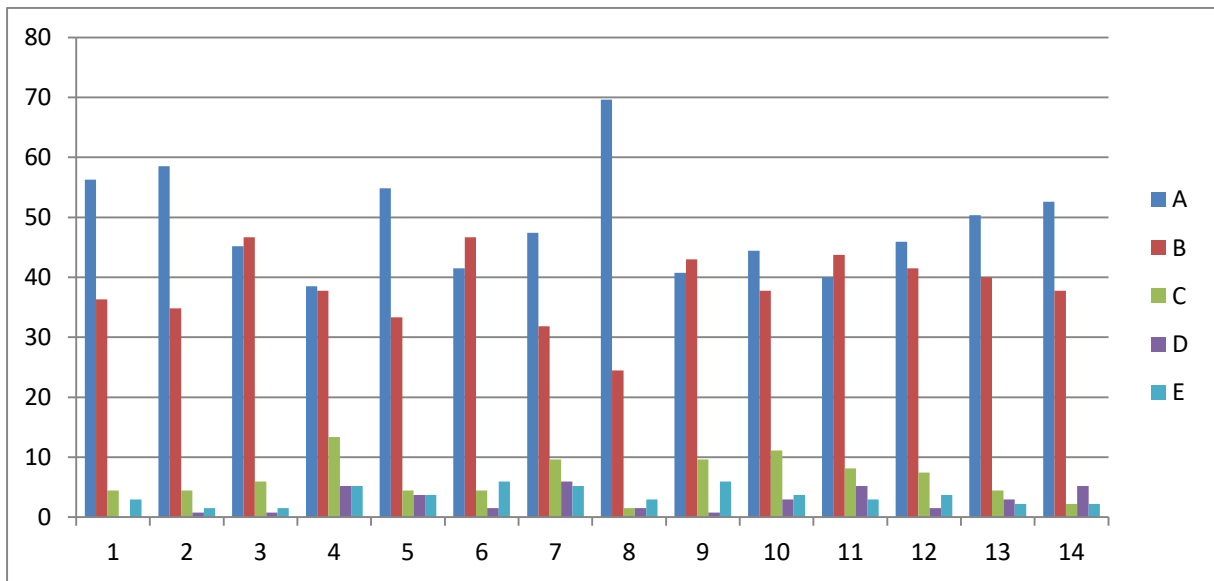
Academic Session – 2022-23
Feedback of Students on College

Feedback form link- <https://forms.gle/gk2UmNGMUcE8KKfS8>

Feedback Analysis

Learners have given their response on a 5 -point Likert scale for-

Option A- Strongly agree-	2.449
Option B- agree-	1.912
Option C- Neither agree nor disagree -	0.325
Option D- Disagree-	0.134
Option E- Strongly disagree-	0.177



On X-axis – Question number

On Y-axis- Response in %

- A- Strongly agree
- B- Agree
- C- Neither agree nor disagree
- D- Disagree
- E- Strongly disagree

For question 1 – 56% students strongly agreed, 36% agreed, 4% neither agreed nor disagreed and 3% strongly disagreed.

Interpretation- 56% students strongly agreed, 36% agreed, 4% neither agreed nor disagreed and 3% strongly disagreed that the office staff of the college is cooperative and helpful.

For question 2- 58% students strongly agreed, 34% agreed, 4% neither agreed nor disagreed, 1% disagreed and 1% strongly disagreed.

Interpretation- 58% students strongly agreed, 34% agreed, 4% neither agreed nor disagreed, 1% disagreed and 1% strongly disagreed that the library staff is cooperative and helpful.

For question 3- 45% students strongly agreed, 47% agreed, 6% neither agreed nor disagreed, 1% disagreed and 1% strongly disagreed.

Interpretation- 45% students strongly agreed, 47% agreed, 6% neither agreed nor disagreed, 1% disagreed and 1% strongly disagreed that Online educational resources/prescribed books/reading materials are available and accessible in the library.

For question 4- 38% students strongly agreed, 38% agreed, 13% neither agreed nor disagreed, 5% disagreed and 5% strongly disagreed.

Interpretation- 38% students strongly agreed, 38% agreed, 13% neither agreed nor disagreed, 5% disagreed and 5% strongly disagreed that Equipment in the lab(s) is/are in good working condition.

For question 5- 55% students strongly agreed, 33% agreed, 4% neither agreed nor disagreed, 4% disagreed and 4% strongly disagreed.

Interpretation- 55% students strongly agreed, 33% agreed, 4% neither agreed nor disagreed, 4% disagreed and 4% strongly disagreed that Separate common rooms for girls and boys are available.

For question 6- 41% students strongly agreed, 47% agreed, 4% neither agreed nor disagreed, 1% disagreed and 6% strongly disagreed.

Interpretation- 41% students strongly agreed, 47% agreed, 4% neither agreed nor disagreed, 1% disagreed and 6% strongly disagreed that Toilet/washrooms are clean and properly maintained.

For question 7- 47% students strongly agreed, 32% agreed, 10% neither agreed nor disagreed, 6% disagreed and 5% strongly disagreed.

Interpretation- 47% students strongly agreed, 32% agreed, 10% neither agreed nor disagreed, 6% disagreed and 5% strongly disagreed that The classrooms are clean and well maintained.

For question 8- 70% students strongly agreed, 24% agreed, 1% neither agreed nor disagreed, 1% disagreed and 3% strongly disagreed.

Interpretation- 70% students strongly agreed, 24% agreed, 1% neither agreed nor disagreed, 1% disagreed and 3% strongly disagreed that The campus is green and eco-friendly.

For question 9- 41% students strongly agreed, 43% agreed, 10% neither agreed nor disagreed, 1% disagreed and 6% strongly disagreed.

Interpretation- 41% students strongly agreed, 43% agreed, 10% neither agreed nor disagreed, 1% disagreed and 6% strongly disagreed that Students grievances are redressed/problems are solved well in time.

For question 10- 44% students strongly agreed, 38% agreed, 11% neither agreed nor disagreed, 3% disagreed and 4% strongly disagreed.

Interpretation- 44% students strongly agreed, 38% agreed, 11% neither agreed nor disagreed, 3% disagreed and 4% strongly disagreed that Entrepreneurship Development Cell and placement cell is functional in the college.

For question 11- 40% students strongly agreed, 44% agreed, 8% neither agreed nor disagreed, 5% disagreed and 3% strongly disagreed.

Interpretation- 40% students strongly agreed, 44% agreed, 8% neither agreed nor disagreed, 5% disagreed and 3% strongly disagreed that Authorities ensure strict discipline on and off the campus.

For question 12- 46% students strongly agreed, 41% agreed, 7% neither agreed nor disagreed, 1% disagreed and 4% disagreed.

Interpretation- 46% students strongly agreed, 41% agreed, 7% neither agreed nor disagreed, 1% disagreed and 4% disagreed that Girl students' security is given utmost priority.

For question 13- 50% students strongly agreed, 40% agreed, 4% neither agreed nor disagreed, 3% disagreed and 2% strongly disagreed.

Interpretation- 50% students strongly agreed, 40% agreed, 4% neither agreed nor disagreed, 3% disagreed and 2% strongly disagreed that the institution strives for academic excellence.

For question 14- 53% students strongly agreed, 38% agreed, 2% neither agreed nor disagreed, 5% disagreed and 2% strongly disagreed.

Interpretation- 53% students strongly agreed, 38% agreed, 2% neither agreed nor disagreed, 5% disagreed and 2% strongly disagreed that The institution promotes participation of students in co-curricular, extra-curricular, sports and other events at all levels.

Prepared and submitted by –
Asst. Prof. Amit S. Thakare
Member Secretary, Feedback Committee

Appendix Specimen Feedback Form



BHIWAPUR MAHAVIDYALAYA, BHIWAPUR

(‘B’ Grade with 2.54 CGPA by NAAC Bengaluru)

Feedback from Students for College
Based on Self-Regulated Responsibilities

Under

Internal Quality Assurance Mechanism which aims at Continuous Improvement for Academic Excellence

Session: 2022- 2023

Name of the student: _____

Semester: _____

Department: _____

Kindly rate the performance on the following attributes on five point scale

A (5.0)	B (4.0)	C (3.0)	D (2.0)	E (1.0)
Strongly Agree पुर्णपणे सहमत	Agree सहमत	Neither Agree - Nor Disagree ना सहमत – ना सहमत	Disagree असहमत	Strongly Disagree पुर्णपणे असहमत

S. No.	Attributes	Marks				
		A	B	C	D	E
1	The office staff of the college is cooperative and helpful महाविद्यालयातील कार्यालयीन कर्मचारी वर्ग सहकारी भावनेचे व मदत करणारे आहेत.					
2	The library staff is cooperative and helpful ग्रंथालयातील कर्मचारी वर्ग सहकारी भावनेचे व मदत करणारे आहेत.					
3	Online educational resources/prescribed books/reading materials are available and accessible in the library ग्रंथालयामध्ये ऑनलाईन शैक्षणिक स्रोत/क्रमिक पाठ्यपुस्तके/वाचन सामग्री उपलब्ध असून सहज प्राप्त आहे.					
4	Equipment in the lab(s) is/are in good working condition प्रयोगशाळेत असलेली साधने चांगल्या कार्यस्थितीत आहेत.					
5	Separate common rooms for girls and boys are available मुले आणि मुलींकरिता स्वतंत्र सामूहिक खोल्या महाविद्यालयात उपलब्ध आहेत.					
6	Toilet/washrooms are clean and properly maintained महाविद्यालयातील स्वच्छतागृहे स्वच्छ आणि व्यवस्थित आहेत.					
7	The classrooms are clean and well maintained वर्गखोल्या स्वच्छ आणि व्यवस्थित आहेत.					
8	The campus is green and eco-friendly महाविद्यालयाचा परिसर निसर्गरम्य आणि पर्यावरणपुरक आहे.					
9	Students grievances are redressed/problems are solved well in time विद्यार्थ्यांच्या समस्यांचे/प्रश्नांची सोडवणूक वेळेतच केली जाते.					
10	Entrepreneurship Development Cell and placement cell is functional in the college महाविद्यालयात औद्योगिकता विकास कक्ष आणि प्रशिक्षण व रोजगार कक्ष कार्यरत आहे.					
11	Authorities ensure strict discipline on and off the campus महाविद्यालय प्रशासन महाविद्यालय परिसरात आणि परिसराबाहेर शिस्तीसंदर्भात कार्यरत असते.					
12	Girl students’ security is given utmost priority					

	विद्यार्थिनींच्या सुरक्षेला महाविद्यालयातर्फे अति-प्राधान्य दिले जाते.					
13	The institution strives for academic excellence शैक्षणिक विकासासाठी महाविद्यालय सतत प्रयत्नशील आहे.					
14	The institution promotes participation of students in co-curricular, extra-curricular, sports and other events at all levels महाविद्यालयातर्फे विद्यार्थ्यांना सर्व स्तरांवरील सहअभ्यासककार्यक्रमांत, अभ्यासे-तर कार्यक्रमात आणि खेळातसहभागी होण्यासाठी सतत प्रोत्साहन दिले जाते.					
	Suggestions if any					
	Signature					



BACKWARD CLASS YOUTH RELIEF COMMITTEE'S
BHIWAPUR MAHAVIDYALAYA

BHIWAPUR DIST. NAGPUR- 441201
ACCREDITED WITH GRADE 'B' (CGPA-2.54) BY NAAC, BENGALURU
ISO-9001:2015

Academic Session – 2022-23

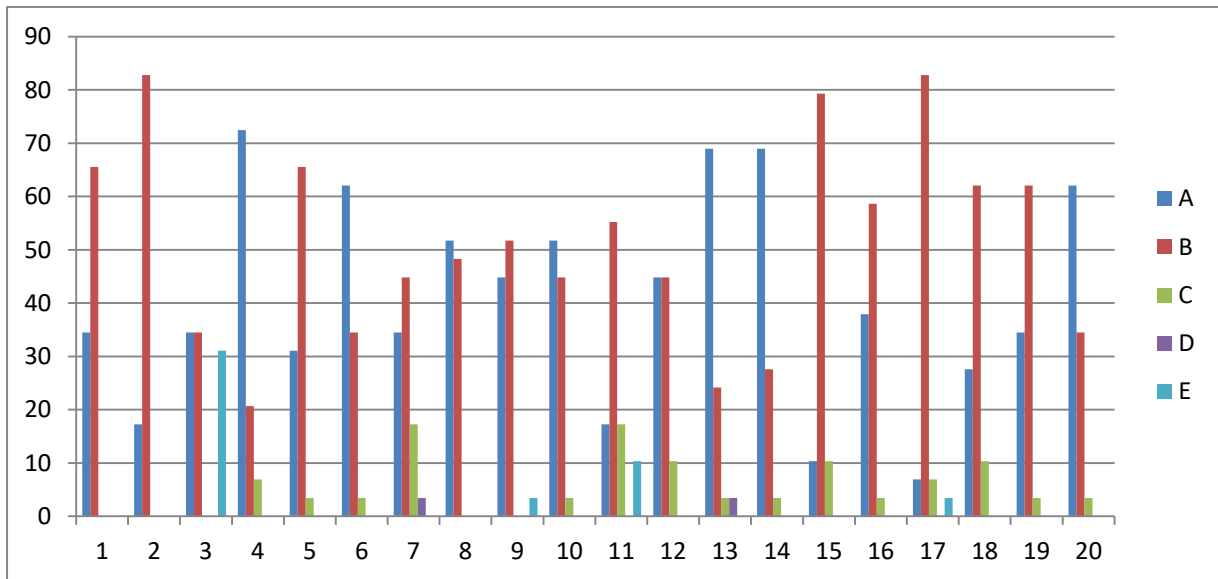
Feedback from Parents on College

Feedback form link- <https://forms.gle/ciDousCdjT7wH4nt5>

Feedback Analysis

Parents have given their response on a 5 -point Likert scale for-

- Option A- Strongly agree- 2.21
- Option B- agree- 2.41
- Option C- Strongly agree- 0.30
- Option D- Disagree- 0.04
- Option E- Strongly disagree- 0.02



On X-axis – Question number

On Y-axis- Response in %

- A- Strongly agree
- B- Agree
- C- Neither agree nor disagree
- D- Disagree
- E- Strongly disagree

For question 1 - 34% parents strongly agreed and 66% agreed.

Interpretation- 34% parents strongly agreed and 66% agreed that their ward is regular in the college

For question 2 - 17% parents strongly agreed, 83% agreed.

Interpretation- 17% parents strongly agreed, 83% agreed that they make regular enquiries of their ward's progress in study

For question 03 - 35% parents strongly agreed, 34% agreed and 31% strongly disagreed.

Interpretation-35% parents strongly agreed, 34% agreed and 31% strongly disagreed that they get information about their ward's educational progress through the Progress Card and also by visiting the college

For question 04 - 72% parents strongly agreed, about 21% agreed and 7% neither agreed nor disagreed.

Interpretation- 72% parents strongly agreed, about 21% agreed and 7% neither agreed nor disagreed that 'Parent-Teacher Association' functions are conducted in their ward's college

For question 05 - 31% parents strongly agreed, about 66% agreed and 3% neither agreed nor disagreed.

Interpretation- 31% parents strongly agreed, about 66% agreed and 3% neither agreed nor disagreed that 'The College has contributed to the overall development of their ward'.

For question 06 - 62% parents strongly agreed, about 35% agreed and 3% neither agreed nor disagreed.

Interpretation- 62% parents strongly agreed, about 35% agreed and 3% neither agreed nor disagreed that their ward should participate in extra-curricular activities other than from curricular activities.

For question 07- 34% parents strongly agreed, about 45% agreed, 17% neither agreed nor disagreed and 4% disagreed.

Interpretation- 34% parents strongly agreed, about 45% agreed, 17% neither agreed nor disagreed and 4% disagreed that they are ready to contribute in the development of the college

For question 08 - 52% parents strongly agreed and 48% agreed.

Interpretation- 52% parents strongly agreed and 48% agreed that they are satisfied with the facilities provided by the college

For question 09 - 45% parents strongly agreed, 52% agreed and 3% strongly disagreed.

Interpretation- 45% parents strongly agreed, 52% agreed and 3% strongly disagreed that teacher has pivotal role in the development of parents' educational progress.

For question 10 - 52% parents strongly agreed, 45% agreed and 3% neither agreed nor disagreed.

Interpretation- 52% parents strongly agreed, 45% agreed and 3% neither agreed nor disagreed that significant contribution of the college in the development of bhiwapur.

For question 11 - 17% parents strongly agreed, 55% agreed, 17% neither agreed nor disagreed and 10% strongly disagreed.

Interpretation- 17% parents strongly agreed, 55% agreed, 17% neither agreed nor disagreed and 10% strongly disagreed that they were satisfied with the placement and employment opportunities provided by the college

For question 12 - 45% parents strongly agreed, 45% agreed and 10% neither agreed nor disagreed.

Interpretation- 45% parents strongly agreed, 45% agreed and 10% neither agreed nor disagreed that they are satisfied with the functioning of Competitive exam. Preparation cell (UPSC/MPSC)

For question 13 - 69% parents strongly agreed, 24% agreed, 3% neither agreed nor disagreed and 3% disagreed.

Interpretation- 69% parents strongly agreed, 24% agreed, 3% neither agreed nor disagreed and 3% disagreed that they were satisfied with the safety and security of their ward in the college

For question 14 - 69% parents strongly agreed, 27% agreed and 3% neither agreed nor disagreed.

Interpretation- 69% parents strongly agreed, 27% agreed and 3% neither agreed nor disagreed that they were satisfied with the cleanliness and natural environment in the college campus

For question 15 - 10% parents strongly agreed, 79% agreed and 10% neither agreed nor disagreed.

Interpretation- 10% parents strongly agreed, 79% agreed and 10% neither agreed nor disagreed that they were satisfied with the functioning of "Parents' Consumer Society" in the college

For question 16 - 38% parents strongly agreed, 59% agreed and 3% neither agreed nor disagreed.

Interpretation- 38% parents strongly agreed, 59% agreed and 3% neither agreed nor disagreed that their level of satisfaction with the quality of education being imparted by the college.

For question 17 - 7% parents strongly agreed, 83% agreed, 7% neither agreed nor disagreed and 3% strongly disagreed.

Interpretation- 7% parents strongly agreed, 83% agreed, 7% neither agreed nor disagreed and 3% strongly disagreed that the administration of the college strives for

the wellbeing of wards and their parents in terms of imparting quality education.

For question 18 - 28% parents strongly agreed, 62% agreed and 10% neither agreed nor disagreed.

Interpretation- 28% parents strongly agreed, 62% agreed and 10% neither agreed nor disagreed that they were satisfied with the performance of non-teaching staff of the college

For question 19 - 34% parents strongly agreed, 62% agreed and 4% neither agreed nor disagreed.

Interpretation- 34% parents strongly agreed, 62% agreed and 4% neither agreed nor disagreed that the management has key role in the progress of college and its parents

For question 20 - 62% parents strongly agreed, 34% agreed and 3% neither agreed nor disagreed.

Interpretation- 62% parents strongly agreed, 34% agreed and 3% neither agreed nor disagreed that they were satisfied with the free and paid consultancy services in the college.

Compiled and submitted by –
Asst. Prof. Amit S. Thakare
Member Secretary, Feedback Committee

Specimen Feedback Form



BHIWAPUR MAHAVIDYALAYA, BHIWAPUR

(B Grade with 2.54 CGPA by NAAC Bengaluru)

Feedback of Parents on College

Internal Quality Assurance Mechanism aims at Continuous Improvement for Academic

Excellence and Results

Session – 2022 -2023

Name: _____

Profession: _____

Kindly rate the performance on the following attributes on four point scale.

A (5.0)	B (4.0)	C (3.0)	D (2.0)	E (1.0)
Strongly Agree पुर्णपणे सहमत	Agree सहमत	Neither Agree – Nor Disagree ना सहमत – ना सहमत	Disagree असहमत	Strongly Disagree पुर्णपणे असहमत

Sr. No	Attributes	Marks				
		A	B	C	E	D
01	तुमचा पाल्य महाविद्यालयात नियमित जातो. Your ward is regular in the college					
02	आपण आपल्या पाल्याच्या अभ्यासाची चौकशी करता You make regular enquiries of your ward's progress in study					
03	आपल्या पाल्याच्या शैक्षणिक प्रगतिची माहिती प्रगतीपुस्तकांवरून व महाविद्यालयात जावून घेता You get information about your ward's educational progress through the Progress Card and also by visiting the college					
04	तुमचा पाल्य ज्या महाविद्यालयात अध्ययन करतो. तेथे पालक – शिक्षक संघ कार्यप्रवण आहे 'Parent-Teacher Association' functions in your ward's college					
05	तुमच्या पाल्याच्या सर्वांगीण विकासात महाविद्यालयाचे योगदान आहे असे वाटते The college has contributed to the overall development of your ward.					
06	तुमचा पाल्य अभ्यासक्रमाव्यतिरिक्त इतर शैक्षणिक उपक्रमांमध्ये सहभागी व्हायला पाहिजे. Your ward should participate in extra-curricular activities other than from curricular activities					
07	महाविद्यालयाच्या विकासात आपण सहकार्य करायला तयार आहात You are ready to contribute in the development of the					

	college					
08	महाविद्यालयाच्या सोयी, सवलती व उपकरणांविषयी आपण समाधानी आहात You are satisfied with the facilities provided by the college					
09	विद्यार्थ्यांच्या शैक्षणिक विकासात शिक्षकांची भूमिका महत्त्वपूर्ण आहे Teacher has pivotal role in the development of students' educational progress					
10	भिवापूर शहराच्या विकासात महाविद्यालयाचे योगदान महत्त्वपूर्ण आहे Significant contribution of the college in the development of Bhiwapur.					
11	महाविद्यालयाच्या माध्यमातून तुमच्या पाल्याला पुरविण्यात येणाऱ्या रोजगाराच्या संधिबाबत आपण समाधानी आहात Satisfied with the Placement and employment opportunities provided by the college					
12	स्पर्धा परीक्षा मार्गदर्शन केंद्राच्या (UPSC/MPSC) सुविधेबाबत आपण समाधानी आहात. You are satisfied with the functioning of Competitive exam. preparation cell (UPSC/MPSC)					
13	महाविद्यालयातर्फे तुमच्या पाल्याची घेण्यात येणाऱ्या सुरक्षा व संरक्षणाबाबत आपण समाधानी आहात Satisfied with the safety and security of your ward in the college					
14	महाविद्यालयातील स्वच्छता व नैसर्गिक पर्यावरणाबाबत आपण किती समाधानी आहात The extent to which you are satisfied with the cleanliness and natural environment in the college campus					
15	महाविद्यालयातील विद्यार्थी ग्राहक भंडाराच्या सुविधेबाबत आपण समाधानी आहात Satisfied with the functioning of "Students' Consumer Society" in the college					
16	आपल्या पाल्याला महाविद्यालयात शिक्षकांकडून दिल्या जाणाऱ्या शिक्षणाच्या दर्जाबाबत आपण समाधानी आहात Your level of satisfaction with the quality of education being imparted by the college					
17	महाविद्यालयातील प्रशासकीय व्यवस्था विद्यार्थी व पालकांच्या गुणात्मक शिक्षणाच्या दृष्टिने हितवह आहे The administration of the college strives for the well being of wards and their parents in terms of imparting quality education.					
18	शिक्षकेतर कर्मचाऱ्यांच्या कामकाजाविषयी आपण समाधानी आहात Satisfied with the performance of non-teaching staff of the college					
19	संस्थाचालकांची विद्यार्थ्यांच्या व महाविद्यालयाच्या विकासात महत्त्वाची भूमिका आहे.					

	The management has key role in the progress of college and its students					
20	महाविद्यालयातर्फे मोफत व विकत पुरविल्या जाणाऱ्या सेवांबाबत आपण समाधानी आहात Satisfied with the free and paid consultancy services in the college					
21	पुढिल काळात आणखी काही सोयी पुरविण्याबाबत तुमच्या काही सुचना . Any suggestions for further improvements-					
		Signature				



BACKWARD CLASS YOUTH RELIEF COMMITTEE'S
BHIWAPUR MAHAVIDYALAYA

BHIWAPUR DIST. NAGPUR- 441201
ACCREDITED WITH GRADE 'B' (CGPA-2.54) BY NAAC, BENGALURU
ISO-9001:2015

Academic Session – 2022-23

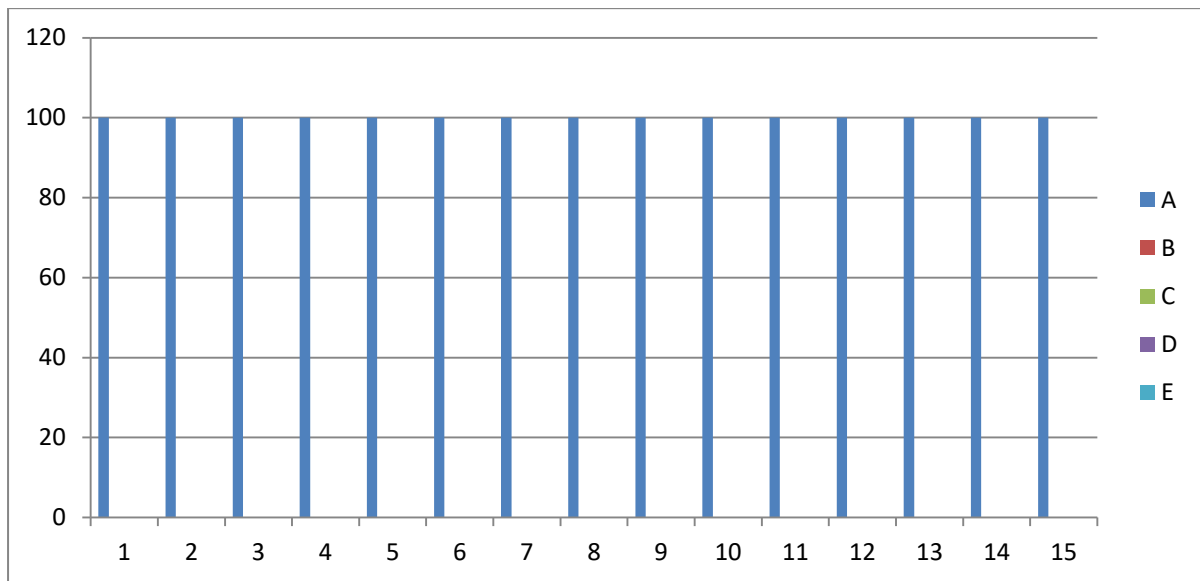
Feedback of Teachers on College

Feedback form link- <https://forms.gle/L8N6czP9DchXsuVGA>

Feedback Analysis

Teachers have given their response on a 5 -point Likert scale for-

Option A- Strongly agree-	5.00
Option B- Agree-	0.00
Option C- Neither agree nor disagree-	0.00
Option D- Disagree-	0.00
Option E- Strongly disagree-	0.00



On X-axis – Question number

On Y-axis- Response in %

- A- Strongly agree
- B- Agree
- C- Neither agree nor disagree
- D- Disagree
- E- Strongly disagree

For question 1 – 100% teaching staff strongly agreed.

Interpretation- 100% teaching staff strongly agreed that syllabus is suitable to the course.

For question 2 - 100% teaching staff strongly agreed.

Interpretation- 100% teaching staff strongly agreed that aims and objectives of the syllabi are well defined and clear to teachers and students.

For question 3 - 100% teaching staff strongly agreed.

Interpretation- 100% teaching staff strongly agreed that course content is followed by corresponding reference materials.

For question 4 - 100% teaching staff strongly agreed.

Interpretation- 100% teaching staff strongly agreed that sufficient numbers of prescribed books are available in the library

For question 5 - 100% teaching staff strongly agreed.

Interpretation- 100% teaching staff strongly agreed that the course/syllabus has good balance between theory and Application

For question 6 - 100% teaching staff strongly agreed.

Interpretation- 100% teaching staff strongly agreed that the books prescribed/listed as reference materials are relevant, easily available in the library.

For question 7 - 100% teaching staff strongly agreed.

Interpretation- 100% teaching staff strongly agreed that infrastructural facilities, such as teacher's rooms, class rooms, reading rooms and toilets are available in the Institution

For question 8 - 100% teaching staff strongly agreed.

Interpretation- 100% teaching staff strongly agreed that separate facility is available for the faculty in the canteen.

For question 9 - 100% teaching staff strongly agreed.

Interpretation- 100% teaching staff strongly agreed that tests and examinations are conducted well in time with proper coverage of all units in the syllabus.

For question 10 - 100% teaching staff strongly agreed.

Interpretation- 100% teaching staff strongly agreed that I have the freedom to adopt new techniques/strategies of teaching such as seminar presentations, group discussions and learners' participations.

For question 11 - 100% teaching staff strongly agreed.

Interpretation- 100% teaching staff strongly agreed that I have the freedom to adopt/adapt new techniques/strategies of testing and assessment of students

For question 12 - 100% teaching staff strongly agreed.

Interpretation- 100% teaching staff strongly agreed that the environment in the institution is conducive for teaching and research.

For question 13 - 100% teaching staff strongly agreed.

Interpretation- 100% teaching staff strongly agreed that the administration is teacher friendly.

For question 14 - 100% teaching staff strongly agreed.

Interpretation- 100% teaching staff strongly agreed that the institution provides adequate and smooth support for projects and research facilities.

For question 15 - 100% teaching staff strongly agreed.

Interpretation- 100% teaching staff strongly agreed that provisions for professional development are non-discriminatory and fair

Compiled and submitted by –

Asst. Prof. Amit S. Thakare
Member Secretary, Feedback Committee



Specimen Feedback Form

BHIWAPUR MAHAVIDYALAYA, BHIWAPUR
(B Grade with 2.54 CGPA by NAAC Bengaluru)

Feedback of Teacher on College

**Internal Quality Assurance Mechanism aimed at Continuous Improvement for
Academic Excellence and Result**

Session – 2022 -2023

Name: _____

Department: _____

Kindly rate the performance on the following attributes on five point scale

Strongly agree- 5.00	Agree- 4.00	Neither agree nor disagree- 3.00	Disagree- 2.00	Strongly disagree- 1.0
A	B	C	D	E

Sr. No	Attributes	Marks				
		A	B	C	D	E
1	Syllabus is suitable to the course.					
2	Aims and objectives of the syllabi are well defined and clear to teachers and students.					
3	Course content is followed by corresponding reference materials.					
4	Sufficient numbers of prescribed books are available in the Library					
5	The course/syllabus has good balance between theory and application					
6	The books prescribed/listed as reference materials are relevant, easily available in the Library.					
7	Infrastructural facilities, such as teacher's rooms, class rooms, reading rooms and toilets are available in the Institution					
8	Separate facility is available for the faculty in the canteen.					
9	Tests and examinations are conducted well in time with proper coverage of all units in the syllabus.					

10	I have the freedom to adopt new techniques/strategies of teaching such as seminar presentations, group discussions and learners' participations.					
11	I have the freedom to adopt/adapt new techniques/strategies of testing and assessment of students					
12	The environment in the institution is conducive for teaching and research.					
13	The administration is teacher friendly.					
14	The Institution provides adequate and smooth support for projects and research facilities.					
15	Provisions for professional development are non-discriminatory and fair					
16	Suggestions for future improvements :					
	Signature					



BACKWARD CLASS YOUTH RELIEF COMMITTEE'S
BHIWAPUR MAHAVIDYALAYA

BHIWAPUR DIST. NAGPUR- 441201
ACCREDITED WITH GRADE 'B' (CGPA-2.54) BY NAAC, BENGALURU
ISO-9001:2015

Academic Session – 2022-23

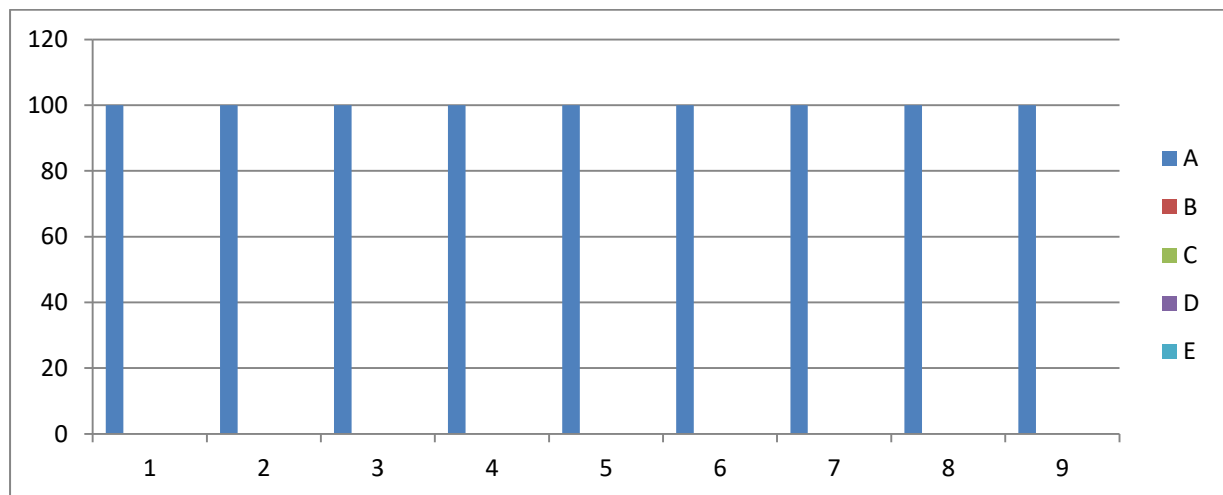
Feedback of Non-Teaching Staff on College

Feedback form link- <https://forms.gle/BtDpucuRn2Zgg4CC8>

Feedback Analysis

Non-Teaching Staff have given their response on a 5 -point Likert scale for-

Option A- Strongly agree-	5.00
Option B- Agree-	0.00
Option C- Neither agree nor disagree -	0.00
Option D- Disagree-	0.00
Option E- Strongly disagree-	0.00



On X-axis – Question number

On Y-axis- Response in %

- A- Strongly agree
- B- Agree
- C- Neither agree nor disagree
- D- Disagree
- E- Strongly disagree

For question 1 - 100% non-teaching staff strongly agreed.

Interpretation- All non-teaching staff strongly agreed that modern technology is used in the day-to day functioning of the college.

For question 2 - 100% non-teaching staff strongly agreed.

Interpretation- All non-teaching staff strongly agreed that ICT is made mandatory for all the employees of the college.

For question 3 - 100% Non-Teaching Staff strongly agreed.

Interpretation- All non-teaching staff strongly agreed that workshops and training sessions are organized to increase the efficiency of non –teaching staff.

For question 4 - 100% non-teaching staff strongly agreed.

Interpretation- All non-teaching staff strongly agreed that they are aware of their accountability towards work.

For question 5 - 100% non-teaching staff strongly agreed.

Interpretation- All Non-Teaching Staff strongly agreed that they are ready to help students during their academic sojourn

For question 6 - 100% non-teaching staff strongly agreed.

Interpretation- All non-teaching staff strongly agreed that their work is done without any partiality or discrimination towards others

For question 7 - 100% non-teaching staff strongly agreed.

Interpretation- All non-teaching staff strongly agreed that they are aware of their Sense of responsibility for college

For question 8 - 100% non-teaching staff strongly agreed.

Interpretation- All non-teaching staff strongly agreed that they are satisfied with the work culture of the principal and the environment of the college.

For question 9 - 100% non-teaching staff strongly agreed.

Interpretation- All non-teaching staff strongly agreed that they ensure active participation in all activities of the college.

Compiled and submitted by –

Asst. Prof. Amit S. Thakare
Member Secretary, Feedback Committee



Specimen Feedback Form

BHIWAPUR MAHAVIDYALAYA, BHIWAPUR
(B Grade with 2.54 CGPA by NAAC Bengaluru)
Feedback of Non-Teaching Staff on College

Internal Quality Assurance Mechanism aims at Continuous Improvement for Academic
Excellence and Results
Session – 2022- 2023

Name: _____

Kindly rate the performance on the following attributes the five point scale

Strongly agree- 5.00	Agree- 4.00	Neither agree nor disagree- 3.00	Disagree- 2.00	Strongly disagree- 1.0
A	B	C	D	E

Sr. No	Attributes	Marks				
		A	B	C	D	E
01	महाविद्यालयाचे कार्यालयीन कामकाजात आधुनिक पध्दतीचा अवलंब केला जातो Modern Technology is used in the day-to day functioning of the college.					
02	महाविद्यालयातील सर्व शिक्षकेत्तर कर्मचाऱ्यांसाठी माहिती व संवाद तंत्र आवश्यक करण्यात आलेले आहे. ICT is made mandatory for all the employees of the college.					
03	शिक्षकेत्तर कर्मचाऱ्यामध्ये कार्यकुशलता वाढावी यासाठी कार्यशाळा किंवा प्रशिक्षणाचे आयोजन केले जाते Workshops and Training Sessions are organized to increase the efficiency of non-teaching Staff.					
04	आपल्या कार्याप्रती आपण जागरूक आहोत. Aware of our accountability towards work.					
05	आपण विद्यार्थ्यांच्या शैक्षणिक अडचणी दुर करण्यास तत्पर असता Ready to help students during their academic sojourn					
06	महाविद्यालयातील इतर कर्मचाऱ्यांशी कोणताही भेदभाव न					



BACKWARD CLASS YOUTH RELIEF COMMITTEE'S
BHIWAPUR MAHAVIDYALAYA

BHIWAPUR DIST. NAGPUR- 441201
ACCREDITED WITH GRADE 'B' (CGPA-2.54) BY NAAC, BENGALURU
ISO-9001:2015

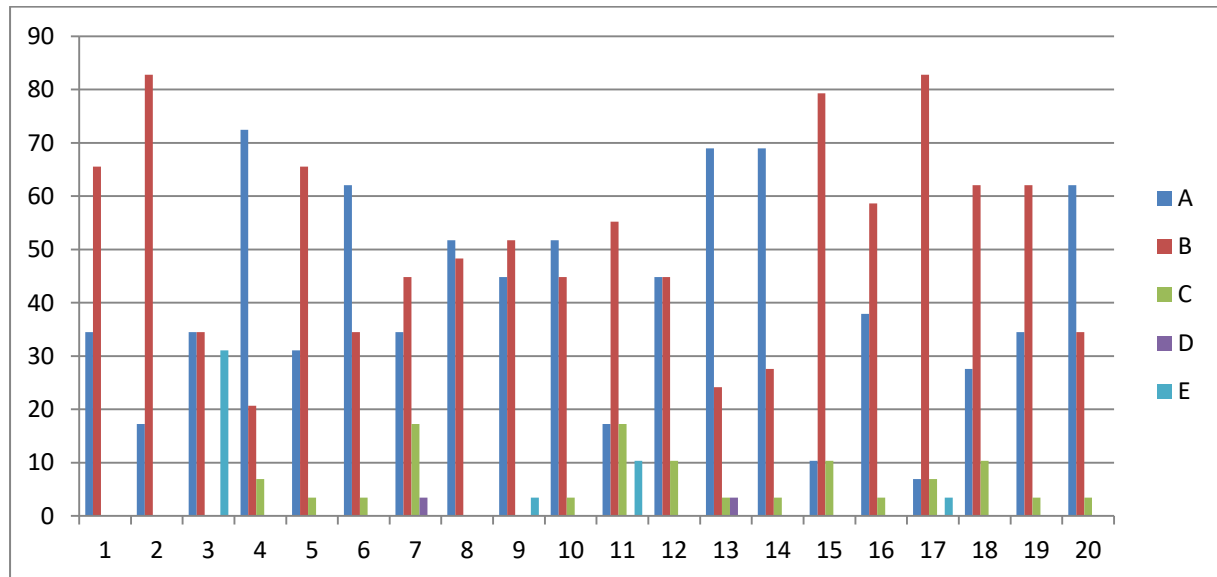
Academic Session – 2022-23
Feedback from Alumni on College

Feedback form link- <https://forms.gle/c3RRjWzvoAtTweS57>

Feedback Analysis

Alumni have given their response on a 5 -point Likert scale for-

Option A- Strongly agree-	2.22
Option B- agree-	2.41
Option C- Neither agree nor disagree -	0.30
Option D- Disagree-	0.04
Option E- Strongly disagree-	0.02



On X-axis – Question number

On Y-axis- Response in %

- A- Strongly agree
- B- Agree
- C- Neither agree nor disagree
- D- Disagree
- E- Strongly disagree

For question 1 - 34% alumni strongly agreed and 66% agreed.

Interpretation- 34% alumni strongly agreed and 66% agreed ``that the college is keeping up with the changing times.

For question 2 - 17% alumni strongly agreed and 83% agreed.

Interpretation- 17% alumni strongly agreed and 83% agreed that the college is empowered to help students achieve their goals.

For question 3 - 35% alumni strongly agreed, 34% agreed and 31% strongly disagreed.

Interpretation- 35% alumni strongly agreed, 34% agreed and 31% strongly disagreed that students are acquainted with the information and communication technologies used in the classrooms.

For question 04 - 72% alumni strongly agreed, 21% agreed and 7% neither agreed nor disagreed.

Interpretation- 72% alumni strongly agreed, 21% agreed and 7% neither agreed nor disagreed that the administration of the college is vibrant in nature.

For question 05 - 31% alumni strongly agreed, 66% agreed and 3% neither agreed nor disagreed.

Interpretation- 31% alumni strongly agreed, 66% agreed and 3% neither agreed nor disagreed that the college is equipped with sufficient number of computers.

For question 06 - 62% alumni strongly agreed, 35% agreed and 3% neither agreed nor disagreed.

Interpretation- 62% alumni strongly agreed, 35% agreed and 3% neither agreed nor disagreed that college library is updated from time to time.

For question 07- 34% alumni strongly agreed, 45% agreed, 17% neither agreed nor disagreed and 3% disagreed.

Interpretation- 34% alumni strongly agreed, 45% agreed, 17% neither agreed nor disagreed and 3% disagreed that college has long term policies for the bright future of the students.

For question 08 - 52% alumni strongly agreed and 48% agreed.

Interpretation- 52% alumni strongly agreed and 48% agreed that satisfied with the sports and other facilities available in the college.

For question 09 - 45% alumni strongly agreed, 52% agreed and 3% strongly disagreed.

Interpretation- 45% alumni strongly agreed, 52% agreed and 3% strongly disagreed that they see the enhancement in the quality of teachers over a period of time.

For question 10 - 52% alumni strongly agreed, 45% agreed and 3% neither agreed nor disagreed.

Interpretation- 52% alumni strongly agreed, 45% agreed and 3% neither agreed nor disagreed that visible and marked benefits in students' personalities from the enhanced quality of teachers.

For question 11 - 17% alumni strongly agreed, 55% agreed, 18% neither agreed nor disagreed and 10% strongly disagreed.

Interpretation- 17% alumni strongly agreed, 55% agreed, 18% neither agreed nor disagreed and 10% strongly disagreed that college actively involves in community development programmes.

For question 12 - 45% alumni strongly agreed, 45% agreed and 10% neither agreed nor disagreed.

Interpretation- 45% alumni strongly agreed, 45% agreed and 10% neither agreed nor disagreed that Timely aid is provided to the needy and poor students.

For question 13 - 69% alumni strongly agreed, 24% agreed, 4% neither agreed nor disagreed and 3% disagreed.

Interpretation- 69% alumni strongly agreed, 24% agreed, 4% neither agreed nor disagreed and 3% disagreed that their contribution in the development of the college is ensured.

For question 14 - 69% alumni strongly agreed, 28% agreed and 3% neither agreed nor disagreed.

Interpretation- 69% alumni strongly agreed, 28% agreed and 3% neither agreed nor disagreed that alumni are motivated by valuing their efforts through periodic motivation in the form of prizes.

For question 15 - 10% alumni strongly agreed, 79% agreed and 10% neither agreed nor disagreed.

Interpretation- 10% alumni strongly agreed, 79% agreed and 10% neither agreed nor disagreed that alumni are trained to participate in the cultural programmes (Dance, Drama etc.).

For question 16 - 38% alumni strongly agreed, 59% agreed and 3% neither agreed nor disagreed.

Interpretation- 38% alumni strongly agreed, 59% agreed and 3% neither agreed nor disagreed that that they are satisfied with the facilities made available in the competitive guidance centre.

For question 17 - 7% alumni strongly agreed, 83% agreed, 7% neither agreed nor disagreed and 3% strongly disagreed.

Interpretation- 7% alumni strongly agreed, 83% agreed, 7% neither agreed nor disagreed and 3% strongly disagreed that they are satisfied with the employment opportunities made available in the college for the students.

For question 18 - 28% alumni strongly agreed, 62% agreed and 10% neither agreed nor disagreed.

Interpretation- 28% alumni strongly agreed, 62% agreed and 10% neither agreed nor disagreed that they are satisfied with the free and paid consultancy services offered in the college.

For question 19 - 35% alumni strongly agreed, 62% agreed and 4% neither agreed nor disagreed.

Interpretation- 34% alumni strongly agreed, 62% agreed and 4% neither agreed nor disagreed that they are satisfied with the social activities taken up by the college.

For question 20 - 62% alumni strongly agreed, 34% agreed and 4% neither agreed nor disagreed.

Interpretation- 62% alumni strongly agreed, 34% agreed and 4% neither agreed nor disagreed that full contribution for the overall development of the college is ensured.

Compiled and submitted by –

Asst. Prof. Amit S. Thakare

Member Secretary, Feedback Committee

Specimen Feedback Form



BHIWAPUR MAHAVIDYALAYA, BHIWAPUR

(B Grade with 2.54 CGPA by NAAC Bengaluru)

Feedback of Alumni on College

Internal Quality Assurance Mechanism aims at Continuous Improvement for Academic Excellence and Results

Session – 2022 -2023

प्रिय विद्यार्थ्यांनो,

बॅकवर्ड क्लास युथ रिलीफ कमिटीच्या अंतर्गत भिवापूर महाविद्यालय, भिवापूर जि. नागपूर येथून आपण स्नातक, स्नातकोत्तर पदवी, डॉक्टरल अभ्यासक्रम पूर्ण केला त्याबद्दल आपले आभार. हा अर्ज आपल्याकडून काही सुचना, नविन अपेक्षा इ.बद्दल माहिती मिळण्यासाठी तयार केलेला आहे. करिता आपण ते सुचवावे.

Dear Alumnus,

Thanks for considering Backward Class Youth Relief Committee's Bhiwapur Mahavidyalaya as a source of your Graduate / Post Graduate/ Doctoral Studies. This form has been designed to seek your suggestions or comments about the college.

Name: _____

Profession: _____

E- mail -

Contact no -

Kindly rate the performance on the following attributes on five point scale

A (5.0)	B (4.0)	C (3.0)	D (2.0)	E (1.0)
Strongly Agree पुर्णपणे सहमत	Agree सहमत	Neither Agree – Nor Disagree ना सहमत – ना सहमत	Disagree असहमत	Strongly Disagree पुर्णपणे असहमत

Sr. No	Attributes	Marks				
		A	B	C	D	E
01	महाविद्यालय काळानुसार बदलत आहे. The college is keeping up with the changing times.					
02	महाविद्यालय विद्यार्थ्यांचे ध्येय गाठण्यासाठी सक्षम आहे. The college is empowered to help students achieve their goals.					

03	महाविद्यालयात विद्यार्थी माहिती व संचारच्या माध्यमातून वर्गामध्ये दिल्या जाण्याच्या शिक्षणाबद्दल परिचित आहे. Students are acquainted with the Information and Communication Technologies used in the classrooms.					
04	महाविद्यालयातील प्रशासन व्यवस्था गतीषिल आहे. The Administration of the college is vibrant in nature.					
05	महाविद्यालय संपूर्ण संगणकीकृत करण्यात आले आहे. The college is equipped with sufficient number of computers.					
06	महाविद्यालयाचे ग्रंथालय अध्यावत आहे. College Library is updated from time to time					
07	महाविद्यालय विद्यार्थ्यांच्या उज्वल भविष्यासाठी काही दिर्घकालीन योजना राबविते College has long term policies for the bright future of the students.					
08	महाविद्यालयातील खेळ व उपलब्ध सुविधेविषयी आपण समाधानी आहात Satisfied with the Sports and other facilities available in the college.					
09	महाविद्यालयातील शिक्षकांच्या गुणवत्तामध्ये वाढ झाली आहे. Enhancement in the quality of teachers over a period of time.					
10	शिक्षकांच्या गुणवत्तावाढीचा फायदा विद्यार्थ्यांना होतो आहे. Visible and marked benefits in students' personalities from the enhanced quality of teachers.					
11	महाविद्यालय गावातील सामाजिक कार्यामध्ये सहभागी होत असते. College actively involves in Community Development programmes					
12	महाविद्यालय गरजू व गरिब विद्यार्थ्यांना मदत करते. Timely aid is provided to the needy and poor students.					
13	तुम्ही महाविद्यालयाच्या विकासासाठी काही योगदान करता Your contribution in the development of the college is ensured					
14	गुणवत्ताधारक विद्यार्थ्यांना आपण बक्षिसे देवून प्रोत्साहित करता					



BACKWARD CLASS YOUTH RELIEF COMMITTEE'S
BHIWAPUR MAHAVIDYALAYA

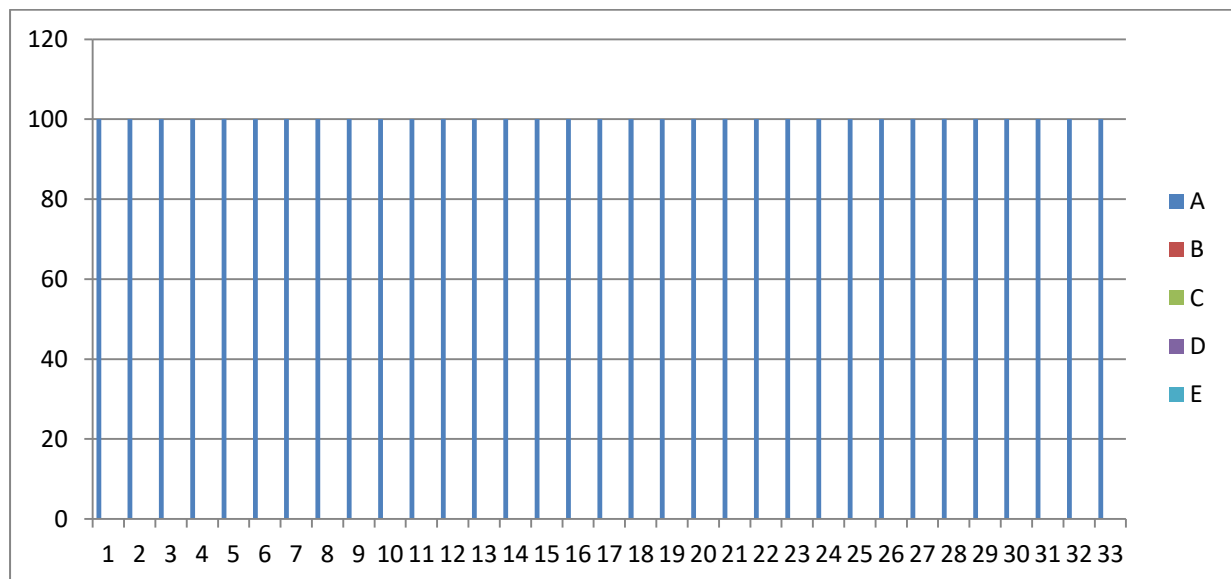
BHIWAPUR DIST. NAGPUR- 441201
ACCREDITED WITH GRADE 'B' (CGPA-2.54) BY NAAC, BENGALURU
ISO-9001:2015

Academic Session – 2022-23
Feedback of Management on college

Feedback Analysis

Management have given their Responses on a 5 -point Likert Scale for-

Option A- Strongly agree-	5.00
Option B- Agree-	0.00
Option C- Neither agree nor disagree -	0.00
Option D- Disagree-	0.00
Option E- Strongly disagree-	0.00



On X-axis – Question number

On Y-axis- Response in %

- A- Strongly agree
- B- Agree
- C- Neither agree nor disagree
- D- Disagree
- E- Strongly disagree

For question 1 – 100% management members strongly agreed.

Interpretation- 100% management member strongly agreed that the college strives to fulfill the objectives for which it has been started.

For question 2 – 100% management members strongly agreed.

Interpretation- 100% management members strongly agreed that students of the college pursue intellectual, social and cultural programmes apart from being part of teaching-learning & evaluation processes.

For question 3 – 100% management members agreed.

Interpretation- 100% management members agreed that the administration of the college encourages ICT in imparting quality education.

For question 4 – 100% management members strongly agreed.

Interpretation- 100% management members strongly agreed that apart from regular academic guidance students are sensitized towards intellectual, social and cultural heritage of India as well as the entire world from time to time.

For question 5 – 100% management members strongly agreed.

Interpretation- 100% management members strongly agreed that the administration is committed in its outlook

For question 6 – 100% management members strongly agreed.

Interpretation- 100% management members strongly agreed that faculty is inclined towards research work and up-gradation of knowledge from time to time

For question 7 – 100% management members strongly agreed.

Interpretation- 100% management members strongly agreed that ample sports infrastructural facilities and opportunities are available for the students and staff of the college.

For question 8 – 100% management members strongly agreed.

Interpretation- 100% management members strongly agreed that scholarship facilities are provided to the students through various government schemes.

For question 9 – 100% management members strongly agreed.

Interpretation- 100% management members strongly agreed that separate washrooms are available for women faculty and girl students of the college.

For question 10 – 100% management members strongly agreed.

Interpretation- 100% management members strongly agreed that management is made aware of the day to day activities of the college.

For question 11– 100% management members strongly agreed.

Interpretation- 100% management members strongly agreed that dress code is implemented for the faculty as well as for the students.

For question 12 – 100% management members strongly agreed.

Interpretation- 100% management members strongly agreed that staff of the college is well versed with ICT.

For question 13– 100% management members strongly agreed.

Interpretation- 100% management members strongly agreed that the college indulges in its readiness in all areas to provide employment through quality education.

For question 14 – 100% management members strongly agreed.

Interpretation- 100% management members strongly agreed that implementation of various government schemes for the poor and needy students.

For question 15– 100% management members strongly agreed.

Interpretation- 100% management members strongly agreed that apart from imparting education, the college is active in its Institutional Social Responsibilities (ISR) towards the poor and the needy through its various outreach programmes.

For question 16– 100% management members agreed.

Interpretation- 100% management members agreed that contribution of alumni in promoting and shaping the future citizens of India.

For question 17 – 100% management members strongly agreed.

Interpretation- 100% management members strongly agreed that mutual trust, coordination and understanding among the teachers, students, parents and the alumni.

For question 18– 100% management members strongly agreed.

Interpretation- 100% management members strongly agreed that de-addiction programmes are organized in its letter and spirit.

For question 19– 100% management members strongly agreed.

Interpretation- 100% management members strongly agreed that striving hard to keep the campus eco- friendly and green.

For question 20– 100% management members strongly agreed.

Interpretation- 100% management members strongly agreed that self-financed courses are implemented.

For question 21– 100% management members strongly agreed.

Interpretation- 100% management members strongly agreed that students are benefited by various schemes/projects of the University Grants Commission.

For question 22 – 100% management members strongly agreed.

Interpretation- 100% management members strongly agreed that students are continuously motivated to carry research work with the faculty.

For question 23– 100% management members agreed.

Interpretation- 100% management members agreed that use of ICT in imparting quality education.

For question 24– 100% management members strongly agreed.

Interpretation- 100% management members strongly agreed that the institution is striving for getting the status of college with potential for excellence.

For question 25– 100% management members strongly agreed.

Interpretation- 100% management members strongly agreed that the college always bears in mind the mission and vision of the institute.

For question 26– 100% management members strongly agreed.

Interpretation- 100% management members strongly agreed that library and administration departments are computerized.

For question 27– 100% management members strongly agreed.

Interpretation- 100% management members strongly agreed that gym facility is available in the campus.

For question 28– 100% management members strongly agreed.

Interpretation- 100% management members strongly agreed that the college runs fully/partially on solar/renewable energy

For question 29– 100% management members strongly agreed.

Interpretation- 100% management members strongly agreed that the college ensures water harvesting in the entire campus.

For question 30 – 100% management members strongly agreed.

Interpretation- 100% management members strongly agreed that the canteen services are in tandem with requirements and health of the students.

For question 31– 100% management members strongly agreed.

Interpretation- 100% management members strongly agreed that grievances' of the employees are addressed from time to time.

For question 32 – 100% management members strongly agreed.

Interpretation- 100% management members strongly agreed that faculties are provided computers with updated technology.

For question 33– 100% management members strongly agreed.

Interpretation- 100% management members strongly agreed that women's grievance cell functions in tandem with the rules laid down by the university.

Prepared and submitted by –

Asst. Prof. Amit S. Thakare
Member Secretary, Feedback Committee



Specimen Feedback Form

BHIWAPUR MAHAVIDYALAYA, BHIWAPUR
(B Grade with 2.54 CGPA by NAAC Bengaluru)

Feedback of Management on College

(BACKWARD CLASS YOUTH RELIEF COMMITTEE, KHAMLA, NAGPUR)

Internal Quality Assurance Mechanism aimed at Continuous Improvement for Academic
Excellence and Results
Session – 2022-2023

Name: _____

Designation: _____

Kindly rate the performance on the following attributes on five point scale

Strongly agree- 5.00	Agree- 4.00	Neither agree nor disagree- 3.00	Disagree- 2.00	Strongly disagree- 1.0
A	B	C	D	E

Sr. No	Attributes	Marks				
		A	B	C	D	E
01	महाविद्यालय ज्या उद्दिष्टांसाठी सुरु केल्या गेले त्याची पूर्ती करते The college strives to fulfill the objectives for which it has been started.					
02	शैक्षणिक प्रक्रियेव्यतिरिक्त महाविद्यालयीन विद्यार्थी, बौद्धिक सामाजिक व सांस्कृतिक कार्यक्रमात सहभागी होतात. Students of the college pursue intellectual, social and cultural programmes apart from being part of teaching-learning & evaluation processes.					
03	महाविद्यालय प्रशासन आधुनिक पध्दतीने गुणात्मक शिक्षण (आय. सी.टी.) देण्यासाठी प्रोत्साहित करते. The Administration of the college encourages ICT in imparting quality education.					
04	महाविद्यालयातील विद्यार्थ्यांना शिक्षणाव्यतिरिक्त, भारतातील तसेच जगातील बौद्धिक, सामाजिक व सांस्कृतिक वारसा जपण्यासाठी वेळोवेळी जागृत केल्या जाते. Apart from regular academic guidance students are sensitized towards intellectual, social and cultural heritage of India as well as the entire world from time to time .					
05	महाविद्यालयातील प्रशासन व्यवस्था दृष्टीकोनात वचनबद्ध आहे The Administration is committed in its outlook					
06	महाविद्यालयातील शिक्षक हे संशोधन व अद्यावत ज्ञान ग्रहणाकरीता					

	कार्यान्वीत आहे. Faculty is inclined towards Research work and up-gradation of knowledge from time to time					
07	महाविद्यालय विद्यार्थ्यांना तसेच कर्मचाऱ्यांना खेळाषी निगडीत पुरेष्ण सौयीसुविधल व संधी उपलब्ध करून देते Ample Sports infrastructural facilities and opportunities are available for the students and staff of the college.					
08	विद्यार्थ्यांना शलसनाच्या मरुतत विविध षिष्यवृत्ती महाविद्यालय उपलब्ध करून देते Scholarship facilities are provided to the students through various Government schemes					
09	महाविद्यालयातील महिलांसाठी व विद्यार्थीनीसाठी वेगवेगळे प्रसाधनगृह आहे Separate washrooms are available for women faculty and girl students of the college					
10	महाविद्यालयातील होणल्या विविध उपकृमललबत व्यवस्थापन समितीला माहिती दिली जात असते. Management is made aware of the day to day activities of the college.					
11	महाविद्यालयातील षिक्षकांना व विद्यार्थ्यांना ड्रेसकोड लागू केले आहे Dress code is implemented for the faculty as well as for the students					
12	महाविद्यालयीन कर्मचारी माहिती व संवाद तंत्रज्ञान(आय.सी.टी.) च्या ज्ञानललबत उत्तम व निपूण आहे. Staff of the college is well versed with ICT					
13	महाविद्यालयातील विद्यार्थ्यांना गुणलत्मक षिक्षणलद्वारे रोजगार प्राप्त करण्यास महाविद्यालय तत्पर आहे The College indulges in its readiness in all areas to provide employment through quality education.					
14	महाविद्यालय गरीब व गरजू विद्यार्थ्यांकरीता विविध सरकारी योजना कार्यान्वित करते Implementation of various Government schemes for the poor and needy students					
15	षिक्षणलव्यतिरिक्त गावलमध्ये व झोपडपट्यामधील गरीब व गरजू लोकांकरीता सामाजीक उत्तरदलयात्वलनुसार संस्थलत्मक सामाजीक जलबलदारी (आय. एस.आर.) च्या माध्यमलतून महाविद्यालय विविध कल्याणलत्मक कार्यक्रम रलबलविते Apart from imparting education, the college is active in its Institutional Social Responsibilities (ISR) towards the poor and the needy through its various outreach programmes.					

16	महाविद्यालयातील माजी विद्यार्थी भारतातील भविष्यातील सुजान नागरिकांना आकार देण्यास कार्य करतात Contribution of Alumni in promoting and shaping the future citizens of India					
17	महाविद्यालयातील शिक्षक, विद्यार्थी व पालक महाविद्यालयाबाबत विष्वास संपादन करतात. Mutual trust, coordination and understanding among the teachers, students, parents and the alumni					
18	विद्यार्थी व कर्मचाऱ्यांसाठी नषाबंदी कार्यक्रम महाविद्यालय राबवित आहे. De-addiction programmes are organized in its letter and spirit					
19	महाविद्यालयीन परिसराचे हिरवळीकरण व सौंदर्यीकरण करण्यासाठी महाविद्यालय प्रयत्नरत आहे. Striving hard to keep the campus eco- friendly and green					
20	महाविद्यालयांनी स्व-अर्थसहाय्य अभ्यासक्रम (सेल्फ फायनन्सील कोर्स) चालु केले आहे Self-financed courses are implemented					
21	विद्यापीठ अनुदान आयोगाच्या विविध योजनांचा फायदा विद्यार्थ्यांना पोहचत आहे Students are benefited by various schemes/projects of the University Grants Commission					
22	विद्यार्थ्यांना शिक्षकांसोबतच संसोधन करण्यास प्रोत्साहित केल्या जाते. Students are continuously motivated to carry Research work with the faculty.					
23	महाविद्यालयामध्ये विद्यार्थ्यांच्या शैक्षणिक कार्यमध्ये अत्याधुनिक तंत्रज्ञानाचा(आय.सी.टी.) वापर करण्यात येते Use of ICT in imparting quality education.					
24	महाविद्यालय प्रोटेष्पियल एक्सलेन्स मिळविण्याकरीता प्रयत्न करत आहे. The Institution is striving for getting the status of College with Potential for Excellence.					
25	महाविद्यालय सदैव महाविद्यालयाचे कार्यक्षेत्र व दृष्टीकोन लक्षात ठेवून कार्य करते. The college always bears in mind the mission and vision of the Institute.					
26	ग्रंथालय व कार्यालय विभाग संगणकीकृत करण्यात आले आहे. Library and Administration departments are computerized.					

27	महाविद्यालयात अद्यावत जिमनेषियमची व्यवस्था आहे Gym facility is available in the campus .					
28	महाविद्यालय पूर्णता किंवा अंशता सौरउर्जावर किंवा अक्षय उर्जेवर चालते The College runs fully/ partially on Solar / Renewable energy					
29	महाविद्यालयात सगळीकडे पाण्याची साठवण केल्या जाते. The College ensures water harvesting in the entire campus.					
30	महाविद्यालयातील उपहारगृह सेवा विद्यार्थ्यांच्या आवश्यकतेनुसार व आरोग्याच्या दृष्टीने योग्य आहे. The canteen services are in tandem with requirements and health of the students.					
31	कर्मचाऱ्यांच्या तक्रारी वेळोवेळी सोडविल्या जातात. Grievances' of the employees are addressed from time to time.					
32	शिक्षकांना अद्यावत तंत्रज्ञानासह संगणक पुरविण्यात आलेले आहे. Faculties are provided computers with updated technology.					
33	विद्यापीठाने दिलेल्या नियमावलीनुसार महिला तक्रार केंद्र कार्य करते. Women's grievance cell functions in tandem with the rules laid down by the University.					
34	भविष्यातील सुधारणांसाठी काही सुचना. Suggestions for future improvements : <hr/> <hr/> <hr/> <hr/> <hr/>					
Signature						

Principal
Bhiwapur Mahavidyalaya