



Backward Class Youth relief Committee's

# **BHIWAPUR MAHAVIDYALAYA, BHIWAPUR**

Dist. Nagpur, Maharashtra 441201

Accredited with Grade 'B' (CGPA-2.54) by NAAC, Bengaluru  
ISO-9001:2015

## **2.7.1. STUDENT SATISFACTION SURVEY (SSS) ON OVERALL INSTITUTIONAL PERFORMANCE AND ACTION TAKEN REPORT**

**ACADEMIC SESSION- 2018-2019**

### **Introduction**

Student Satisfaction Survey, recommended by National Assessment and Accreditation Council, includes questions to elicit responses from the students on the various aspects of teaching- learning, infrastructure, knowledge dissemination, use of ICT in Teaching-learning pedagogy, student-centric approaches etc. The Survey is an inherent part of the mechanisms of the Institution apart from Feedback to correct itself through its Exit Feedback given by the outgoing students of the Institution.

The Student Satisfaction Survey has been collected from the outgoing students from the following disciplines: Bachelor of Science, Bachelor of Arts, Bachelor of Commerce and Master of Arts.

### **Bachelor of Science**

#### **Analysis**

Learners have given their responses on a 5 -point Likert Scale. The mode of collection was Survey Form.

- Option 4: 0.78
- Option 3: 2.92
- Option 2: 0.92
- Option 1: 0.21
- Option 0: 0.142

PRINCIPAL

Bhiwapur Mahavidyalaya  
Bhiwapur, Dist. Nagpur

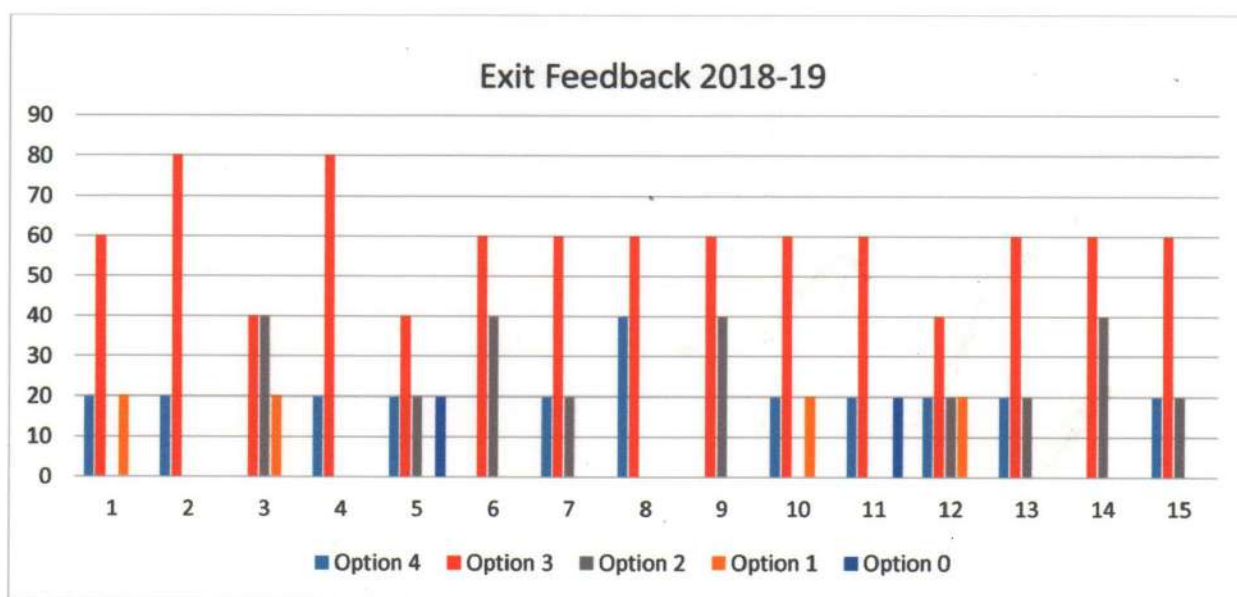


## Remarks and Suggestions by Students

One of the Questions, which was given, 'Teachers' approach to teaching can be described as to which the elicited response on the Likert scale was low, which suggests an introspection in this regard needs to be done.

## Action Taken on the Remarks and Suggestions

As mentioned above, the Institution through its Feedback on Teachers by students has analyzed and has taken cognizance of the remarks. All the representation given to the students on various Bodies and Committees has been displayed on the Notice Board and through oral communication in the class rooms. Students' awareness in this regard has been ensured and the Institution abides by its review of quality policy through Feedbacks.



On X-axis – Question number

On Y-axis- Response in %

**For question 1: 20% students strongly agreed that 85-100% syllabus had been covered in the class and 60% students agreed that 70-84% syllabus had been covered in the class.**



**Interpretation:** Based on the responses it is evident that minimum students have responded on the completion of syllabus. The Syllabus Compliance Committee notified the particulars of syllabus completion to the Office of the Principal with documentation. Thus, it is verified.

**For question 2: 20% students responded that teachers were always able to communicate and 80% students responded that teachers were sometimes able to communicate.**

**Interpretation:** From the above Graph it is interpreted that teachers were always able to communicate.

**For question 3: 40% students responded that teachers' approach to teaching was very good, 40% good and 20% students responded fair.**

**Interpretation:** The Institution would work towards eliciting excellent responses from the remaining students.

**For question 4: 20% students responded that internal evaluation process by teachers was usually honest and impartial and 80% students responded that internal evaluation was usually fair.**

**Interpretation:** From the above Graph, it is interpreted that fairness of the internal evaluation process by the teacher is usually honest and impartial.

**For question 5: 20% students responded that their performance in assignment was always discussed with them. 40 % agreed to usually, 20% responded occasionally and 20% responded rarely.**

**Interpretation:** From the above Graph it is interpreted that students' performance in assignment was always discussed with them.



**For question 6: 60% students responded that teaching and mentoring process in the Institute was very well and 40% students agreed to moderately.**

**Interpretation:** From the above Graph, it is interpreted that the teaching and mentoring process in the Institution facilitates the cognitive, social and emotional growth of students.

**For question 7: 20% students strongly agreed, 60% agreed about provision of Institutions opportunities to learn and grow.**

**Interpretation:** From the above Graph, it is interpreted that the Institution provided multiple opportunities to learn and grow.

**For question 8: 40% students strongly agreed that every time teachers inform them about expected competencies, course outcomes and programme outcomes and 60% students agreed as usually.**

**Interpretation-** In the above graph, it is interpreted that teachers inform them about expected competencies, course outcomes and program outcomes.

**For question 9: 60% students responded that teachers were usually able to identify students' weaknesses and help them to overcome them, 40% students responded that teachers were occasionally able to identify students' weaknesses and help them to overcome them.**

**Interpretation:** In the above Graph, it is interpreted that teachers are able to identify students' weaknesses and help them to overcome them.

**For question 10: 20% students strongly agreed, 60% students agreed that the Institution makes efforts to engage students in the monitoring, review and continuous quality improvement of the teaching-learning process.**



**Interpretation:** From the above Graph it is interpreted that the Institution makes efforts to engage students in the monitoring, review and continuous quality improvement of the teaching- learning process.

**For question 11: 20% students responded to a great extent, 60% moderate, 20% responded not at all.**

**Interpretation:** From the above Graph it is interpreted that some teachers use student-centric methods such as experiential learning, participative learning and problem-solving methodologies for enhancing learning experiences.

**For question 12: 20% students strongly agreed that the teachers encourage them to participate in the extra-curricular activities, 40% students agreed with this.**

**Interpretation:** From the above graph it is interpreted that teachers encourage them to participate in extra-curricular activities but this need to be introspects.

**For question 13: 20% students strongly agreed, 60% students agreed and 20% students neutral.**

**Interpretation:** From the above Graph it is interpreted that efforts have been taken by teachers to inculcate soft skills and employability skills to make them ready for the world of work.

**For question 14: 60% students responded that 70% to 89% teachers use ICT tools and 40% students responded that 50 to 69% teachers use ICT tools while teaching.**

**Interpretation:** From the above Graph, it is interpreted that teachers use ICT tools such as LCD Projector, Multimedia etc. while teaching. The Institution needs to introspect in this regards. The IQAC and Office of the Principal have to take cognizance of this same.



**For question 15: 20% students strongly agreed and 60% students agreed that the overall quality of teaching-learning process in the College is very good.**

**Interpretation:** From the above Graph it is interpreted that the overall quality of teaching-learning process in the College is very good.

### **Bachelor of Arts**

#### **Analysis**

Learners have given their responses on a 5 -point Likert Scale. The mode of collection was Survey Form.

Option 4: 1.363

Option 3: 1.996

Option 2: 1.073

Option 1: 0.483

Option 0: 0.073

#### **Remarks and Suggestions by Students**

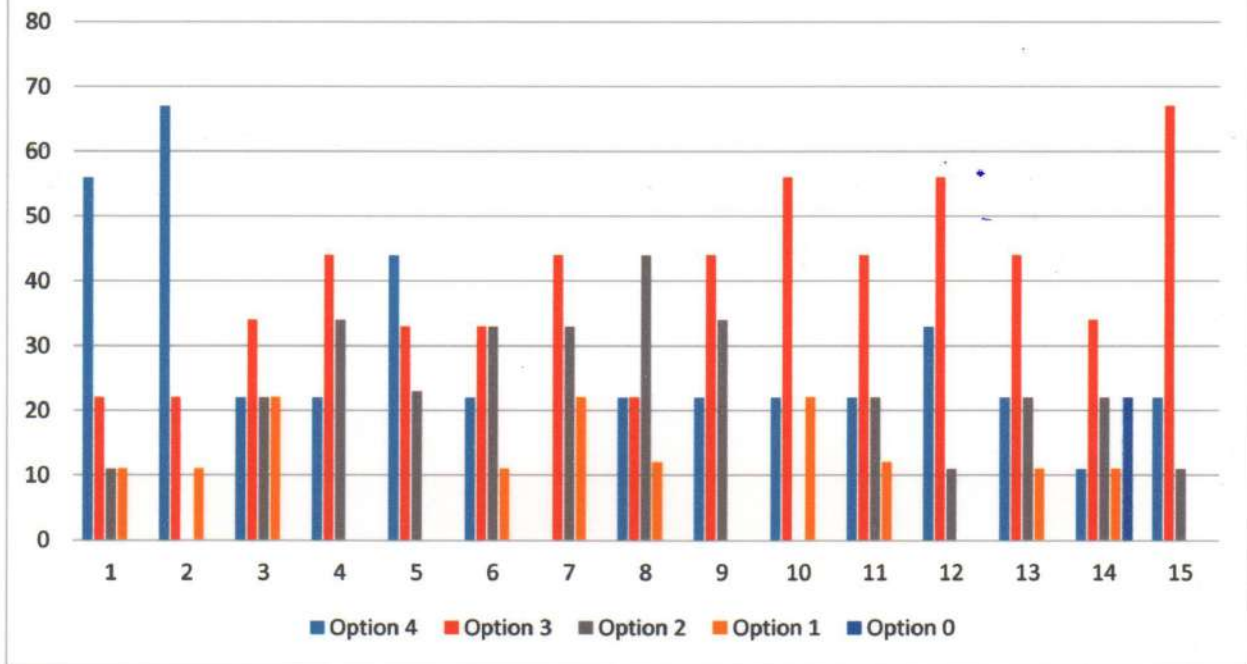
One of the Questions, which was as given, 'What percentage of teachers use ICT tools such as LCD Projector, Multi-media, etc. while teaching?' to which the elicited response on the Likert scale was 11%, which suggests an introspection in this regard needs to be done.

#### **Action Taken on the Remarks and Suggestions**

As mentioned above, the Institution through its Feedback on Teachers by Students has analyzed and has taken cognizance of the remarks. The Institution encouraged the faculty to get themselves thoroughly acquainted with ICT enabled Tools and Internal Quality Assurance Cell organized a Workshop titled, 'All about Google Tools'.



### Institutional Student Satisfaction Survey



On X-axis – Question number

On Y-axis- Response in %

**For question 1: 56% students responded to 85 to 100%, 12% responded to 70 to 84% and 11% students responded to 55 to 69%.**

**Interpretation:** From the above Graph it is interpreted that 56% students responded that 85% to 100% syllabus was covered in the class. The Syllabus Compliance Committee notified the information regarding completion of syllabus to the Office of the Principal with adequate documentation. Thus, it is verified.

**For question 2: 67% students responded that teachers were always effective, 22% responded that teachers were sometimes effective to communicate.**

**Interpretation:** From the above Graph it is interpreted that teachers were effective to communicate.

**For question 3: 22% students responded excellent, 34% responded very good, 22% good and 22% students responded fair.**



**Interpretation:** The Institution would work towards eliciting excellent responses from the remaining students.

**For question 4: 22% students responded to always fair, 44% agreed upon usually fair and 34% students responded that internal evaluation process initiated by the teacher was honest and impartial.**

**Interpretation:** From the above Graph it is interpreted that fairness of the internal evaluation process by the teacher was honest and impartial.

**For question 5: 44 % students' performance in assignment was always discussed with them, 33 % agreed to usually and 23 % responded occasionally.**

**Interpretation:** From the above Graph it is interpreted that students' performance in assignment was always discussed with them.

**For question 6: 22% students responded to significantly, 33% agreed to very well, 33% students responded to moderately and 11% students responded to marginally that teaching and mentoring process in the College facilitates students in their cognitive, social and emotional growth**

**Interpretation:** From the above Graph it is interpreted that the teaching and mentoring process in the College facilitates students in their cognitive, social and emotional growth. The Institution needs to introspect in this regard.

**For question 7: 44% students agreed, 33% students neutral, 22% students responded that the Institution provided multiple opportunities to learn and grow.**

**Interpretation:** From the above Graph it is interpreted that 44% students strongly agreed that Institution provided multiple opportunities to learn and grow. The Institution would work towards eliciting excellent responses from the remaining students.





**For question 8: 22% students strongly agreed on every time, 42% agreed upon usually, 44% occasionally and 12% students responded that teachers rarely informed them about expected competencies, course outcomes and programme outcomes.**

**Interpretation:** In the above Graph, it is interpreted that only 22% students agreed that teachers informed them about expected competencies, course outcomes and programme outcomes. The Institution needs to introspect in this regard. The IQAC and the Office of the Principal have to take cognizance of the same.

**For question 9: 22% students strongly agreed on every time, 44% agreed upon usually, 34% students responded that teachers were occasionally able to identify students' weaknesses and help them to overcome them.**

**Interpretation:** The above Graph it is interpreted that 22% students strongly agreed that teachers are able to identify students' weaknesses and help them to overcome them. The Institution needs to introspect in this regard. The IQAC and the Office of the Principal have to take cognizance of the same.

**For question 10: 22% students strongly agreed, 56% students agreed and 22% students responded neutral that the Institution makes efforts to engage students in the monitoring, review and continuous quality improvement of the teaching-learning process.**

**Interpretation:** From the above Graph it is interpreted that the Institution has to make efforts to engage students in the monitoring, review and continuous quality improvement of the teaching-learning process.

**For question 11: 22% responded to a great extent, 44% responded to moderate, 22% responded to somewhat and 12% students responded that teachers used**



**student-centric methods such as experiential learning, participative learning and problem-solving methodologies for enhancing learning experiences.**

**Interpretation:** The Institution needs to introspect in this regard. The IQAC and the Office of the Principal have to take cognizance of the same..

**For question 12: 33% students strongly agreed, 56% students agreed and 11% students responded that teachers encouraged them to participate in extra-curricular activities.**

**Interpretation:** From the above graph it is interpreted that teachers encouraged students to participate in extra-curricular activities. It is the practice of the Institution to send Notice to respective classes informing them about various activities that are being held. It depends on students' willingness to participate in the extra-curricular activities.

**For question 13: 22% students responded to a great extent, 44% students responded moderate, 22% students responded to somewhat and 11% students responded that efforts are being taken by teachers to inculcate soft skills and employability skills to make them ready for the world of work was very little.**

**Interpretation:** From the above Graph it is interpreted that efforts were taken by teachers to inculcate soft skills and employability skills to make them ready for the world of work. But the Institution needs to introspect in this regard. The IQAC and the Office of the Principal have to take cognizance of the same.

**For question 14: 11% students responded to more than 90%, 34% agreed to 70% to 89%, 22% responded to 50 to 69 %, 11% responded to 30% to 49 % and 22% students responded that less than 29% teachers used ICT tools.**

**Interpretation:** From the above Graph, it is interpreted that only 11% students responded that more than 90% of teachers use ICT tools such as LCD Projector,



Multimedia etc. while teaching. The Institution needs to introspect in this regard. The IQAC and the Office of the Principal have to take cognizance of the same.

**For question 15: 22% students strongly agreed, 37% students agreed that the overall quality of teaching-learning process in the College is very good.**

**Interpretation:** From the above Graph it is interpreted that the overall quality of teaching-learning process in the College is very good.

### **Bachelor of Commerce**

#### **Analysis**

Learners have given their responses on a 5 -point Likert Scale. The mode of collection was Survey Form.

Option 4: 1.230

Option 3: 2.039

Option 2: 1.225

Option 1: 0.440

Option 0: 0.099

#### **Remarks and Suggestions by Students**

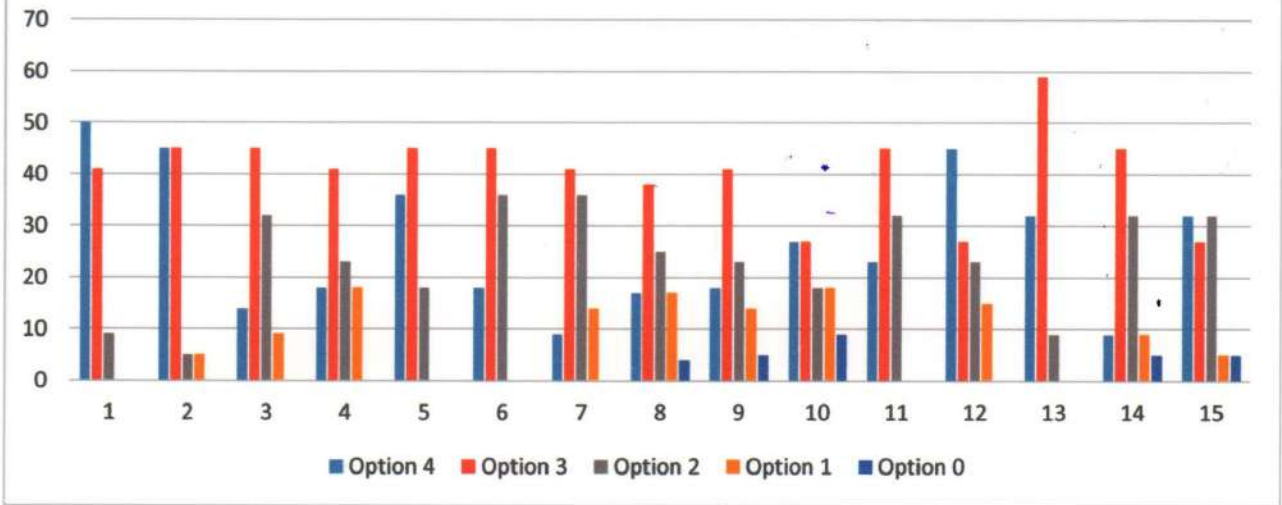
One of the Questions, which was given, 'What percentage of teachers use ICT tools such as LCD Projector, Multi-media, etc. while teaching?' to which the elicited response on the Likert scale was 9%, which suggests an introspection in this regard needs to be done.

#### **Action Taken on the Remarks and Suggestions**

As mentioned above, the Institution through its Feedback on Teachers by students has analyzed and has taken cognizance of the remarks. The Institution needs to introspect in this regard. The IQAC and the Office of the Principal have to take cognizance of the same.



Exit Feedback 2018-19



On X-axis – Question number

On Y-axis- Response in %

**For question 1: 50% students responded that 85% to 100% syllabus was covered in the class, 41% students responded that 70 to 84% syllabus was covered in the class and 9% responded that 55% to 69% syllabus was covered whereas 0% responded that 30% to 54% syllabus was covered.**

**Interpretation:** 50% students responded that 85% to 100% syllabus was covered in the class, 41% students responded that 70 to 84% syllabus was covered in the class 9% responded to 55 to 69% and 0% respond to 30 to 54%.

**For question 2: 45% students responded that teachers were always effective to communicate and 45% students responded that teachers were sometimes effective to communicate, 5% students responded that teachers were just satisfactory to communicate and 5% students responded that teachers were generally ineffective to communicate with students.**

**Interpretation:** 45% students responded that teachers were always effective to communicate and 45% students responded that teachers were sometimes effective to



communicate, 5% students responded that teachers were just satisfactory to communicate and 5% students responded that teachers were generally ineffective to communicate with students.

**For question 3: 14% students responded excellent, 45% responded very good, 32% good and 9% responded fair.**

**Interpretation:** 14% students responded excellent, 45% responded very good, 32% good and 9% fair for the teachers' approach to teaching.

**For question 4: 18% students responded to always fair, 41% students responded usually fair, 23% students responded sometimes fair regarding the evaluation process by teachers.**

**Interpretation:** From the above Graph, it is interpreted that fairness of the internal evaluation process by the teacher is always honest and impartial. But, the Institution needs to introspect in this regard. The IQAC and the Office of the Principal have to take cognizance of the same.

**For question 5: 36% students' performance in assignment was always discussed with them.**

**45 % agreed to usually and 18% responded occasionally.**

**Interpretation:** From the above Graph it is interpreted that students' performance in assignment was always discussed with them.

**For question 6: 18% students responded to significantly, 45% agreed to very well and 36% students responded moderately that the teaching and mentoring process in the College facilitates students in their cognitive, social and emotional growth.**

**Interpretation-** From the above graph, it is interpreted that the teaching and mentoring process in college facilitates students in cognitive, social and emotional growth.



**For question 7: 9% students strongly agreed, 41% agreed, 36% neither agreed nor disagreed, 14% disagreed.**

**Interpretation:** From the above Graph, it is interpreted that only 9% students strongly agreed that the Institution provided multiple opportunities to learn and grow. The Institution needs to introspect in this regard. The IQAC and the Office of the Principal have to take cognizance of the same.

**For question 8: 17% students strongly agreed on every time, 38% agreed upon usually, 25% occasionally, 17% students responded that teachers rarely informed them about expected competencies, course outcomes and programme outcomes and 4% students responded that the teachers never informed them about expected competencies, course outcomes and programme outcomes.**

**Interpretation:** The Institution plans to organize teachers' Orientation Programme to overcome this issue raised in the Feedback.

**For question 9: 18% students strongly agreed on every time, 41% agreed upon usually, 23% occasionally, 14% students responded that teachers were rarely able to identify student's weakness and help them to overcome their issues and 5% students responded that teachers were never able to identify student's weaknesses and help them to overcome their issues**

**Interpretation:** From the above Graph it is interpreted that 18% students agreed that teachers are able to identify students' weaknesses and help them to overcome them. Teachers have been appraised with the responses given in the Feedback. The Institution plans to organize teachers' Orientation Programme to overcome this issue raised in the feedback.

**For question 10: 27% students strongly agreed, 27% agreed, 18% neither agreed nor disagreed, 18% disagreed that the Institution makes efforts to engage**



students in the monitoring, review and continuous quality improvement of the teaching-learning process and 9% students strongly disagreed that the Institution makes efforts to engage students in the monitoring, review and continuous quality improvement of the teaching-learning process.

**Interpretation:**5 From the above Graph, it is interpreted that the institution makes efforts to engage students in the monitoring, review and continuous quality improvement of the teaching learning process. The Institution needs to introspect in this regards.

**For question 11-** 23% students responded to a great extent, 45% responded to moderate, 32% responded to somewhat moderate.

**Interpretation-** From the above graph it is interpreted that teachers use student-centric methods such as experiential learning, participative learning and problem-solving methodologies for enhancing learning experiences.

**For question 12:** 45% students strongly agreed that teachers encourage them to participate in extra-curricular activities, 27% agreed that teachers encourage them to participate in extra-curricular activities, 23% strongly disagreed that teachers encourage them to participate in extra-curricular activities and 15% disagreed that teachers encourage them to participate in extra-curricular activities.

**Interpretation:** From the above Graph, it is interpreted that teachers encourage them to participate in extra-curricular activities. It is the practice of the Institution to send Notice to respective classes informing them about various activities that are being held. It depends on students' willingness to participate in extra-curricular activities.

**For question 13:** 32% students responded to a great extent, 39% responded to moderate, 9% responded to somewhat moderate.



**Interpretation:** From the above Graph, it is interpreted that efforts have been taken by teachers to inculcate soft skills and employability skills to make them ready for the world of work. The Institution needs to introspect in this regard.

**For question 14:** 9% students responded to more than 90%, 45% agreed to 70% to 89% ,32% responded to 50% to 69 %, 9% responded to 30% to 49 % and 5% to less than 29%.

**Interpretation-** From the above Graph, it is interpreted that only 9% students responded that more than 90% of the teachers use ICT tools such as LCD Projector, Multimedia etc. while teaching. The Institution needs to introspect in this regard. The IQAC and the Office of the Principal have to take cognizance of the same.

**For question 15:** 32% students strongly agreed that the overall quality of teaching-learning process in the College is very good, 27% agreed that the overall quality of teaching-learning process in the College is good, 32% neither agreed nor disagreed that the overall quality of teaching-learning process in the College is very good, 5% students disagreed that that the overall quality of teaching-learning process in the College is very good.

**Interpretation-** From the above Graph it is interpreted that that the overall quality of teaching-learning process in the College is very good.

### **Master of Arts (Political Science)**

#### **Analysis**

Learners have given their responses on a 5 -point Likert Scale. The mode of collection was survey form.

Option 4: 3.166

Option 3: 1.666

Option 2: 0.166





Option 1: 00

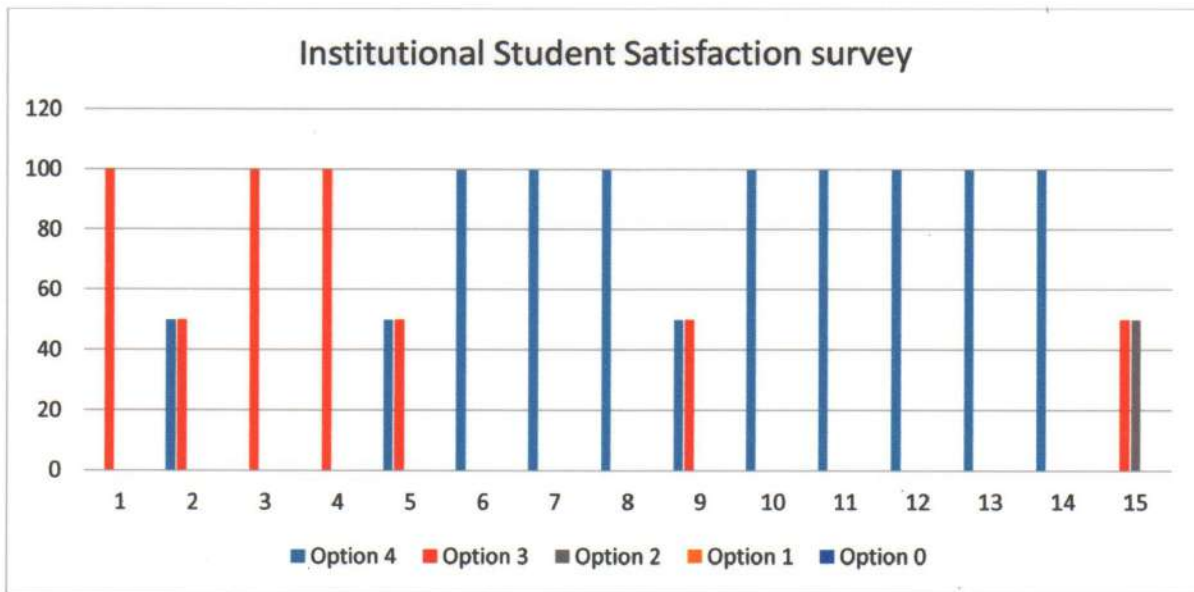
Option 0: 00

### Remarks and Suggestions by Students

One of the Questions, which was given, 'How much of the syllabus was covered in the class?' to which the elicited response on the Likert scale was less, which suggests an introspection in this regard needs to be done.

### Action Taken on the Remarks and Suggestions

As mentioned above, the Institution through its Feedback on Teachers by students has analyzed and has taken cognizance of the remarks. Teachers have been appraised with the responses given in the Feedback. The Syllabus Compliance Committee notified the information regarding the completion of syllabus to the Office of the Principal with adequate documentation.



On X-axis – Question number

On Y-axis- Response in %

**For question 1: 100% students responded to 70 to 84% syllabus was covered in the class.**



**Interpretation:** Teachers have been appraised with the responses given in the Feedback. The Syllabus Compliance Committee notified the information regarding the completion of syllabus to the office of the Principal with adequate documentation.

**For question 2: 50% students responded that teachers were always able to communicate and 50% responded that teachers were sometimes effectively able to communicate.**

**Interpretation:** From the above Graph it is interpreted that teachers communicate effectively.

**For question 3: 100% students responded that teachers' approach to teaching was very good.**

**Interpretation:** From the above Graph it is interpreted that teachers' approach to teaching was very good.

**For question 4: 100% students responded that evaluation process by teachers was usually fair.**

**Interpretation:** From the above Graph, it is interpreted that fairness of the internal evaluation process by the teacher is usually honest and impartial.

**For question 5: 50% students' performance in assignment was always discussed with them and 50 % students agreed to usually.**

**Interpretation:** From the above Graph, it is interpreted that students' performance in assignment was always discussed with them.

**For question 6: 100% students responded that teaching and mentoring process in the College facilitates students in their cognitive, social and emotional growth.**

**Interpretation:** From the above Graph, it is interpreted that the teaching and mentoring process in the College facilitates students in their cognitive, social and emotional growth.



**For question 7: 100% students strongly agreed that the Institution provided multiple opportunities to learn and grow.**

**Interpretation:** From the above Graph, it is interpreted that the Institution provided multiple opportunities to learn and grow.

**For question 8: 100% students agreed that teachers informed them about expected competencies, course outcomes and programme outcomes usually.**

**Interpretation:** In the above Graph, it is interpreted that 100% students agreed that teachers informed them about expected competencies, course outcomes and programme outcomes usually.

**For question 9: 50% students strongly agreed that every time teachers are able to identify students' weaknesses and help them to overcome their issues and 50% students agreed upon always.**

**Interpretation:** In the above graph, it is interpreted that partially students agreed that teachers are able to identify students' weaknesses and help them to overcome their issues.

**For question 10: 100% students strongly agreed that the Institution makes efforts to engage students in the monitoring, review and continuous quality improvement of the teaching-learning process.**

**Interpretation-** From the above Graph, it is interpreted that the Institution makes efforts to engage students in the monitoring, review and continuous quality improvement of the teaching- learning process.

**For question 11: 100% students strongly agreed that teachers use student-centric methods such as experiential learning, participative learning and problem-solving methodologies for enhancing learning experiences to a great extent.**

**Interpretation:** From the above Graph, it is interpreted that teachers use student-centric methods such as experiential learning, participative learning and problem-solving methodologies for enhancing learning experiences.



**For question 12: 100% students strongly agreed that teachers encouraged them to participate in extra-curricular activities.**

**Interpretation:** From the above graph it is interpreted that teachers encouraged them to participate in extra-curricular activities.

**For question 13: 100% students responded that efforts have been taken by teachers to inculcate soft skills and employability skills to make them ready for the world of work.**

**Interpretation-** From the above graph, it is interpreted that efforts have been taken by teachers to inculcate soft skills and employability skills to make them ready for the world of work.

**For question 14: 100% students responded to more than 90% teachers use ICT tools.**

**Interpretation-** From the above Graph, it is interpreted that teachers use ICT tools.

**For question 15: 50% students strongly agreed that the overall quality of teaching-learning process in the College is very good and 50% students agreed.**

**Interpretation:** From the above Graph, it is interpreted that the overall quality of teaching-learning process in the college is very good.

### **Master of Arts (Economics)**

#### **Analysis**

Learners have given their responses on a 5 -point Likert Scale. The mode of collection was Survey form.

Option 4: 1.66

Option 3: 2.66

Option 2: 0.66

Option 1: 00

Option 0: 00

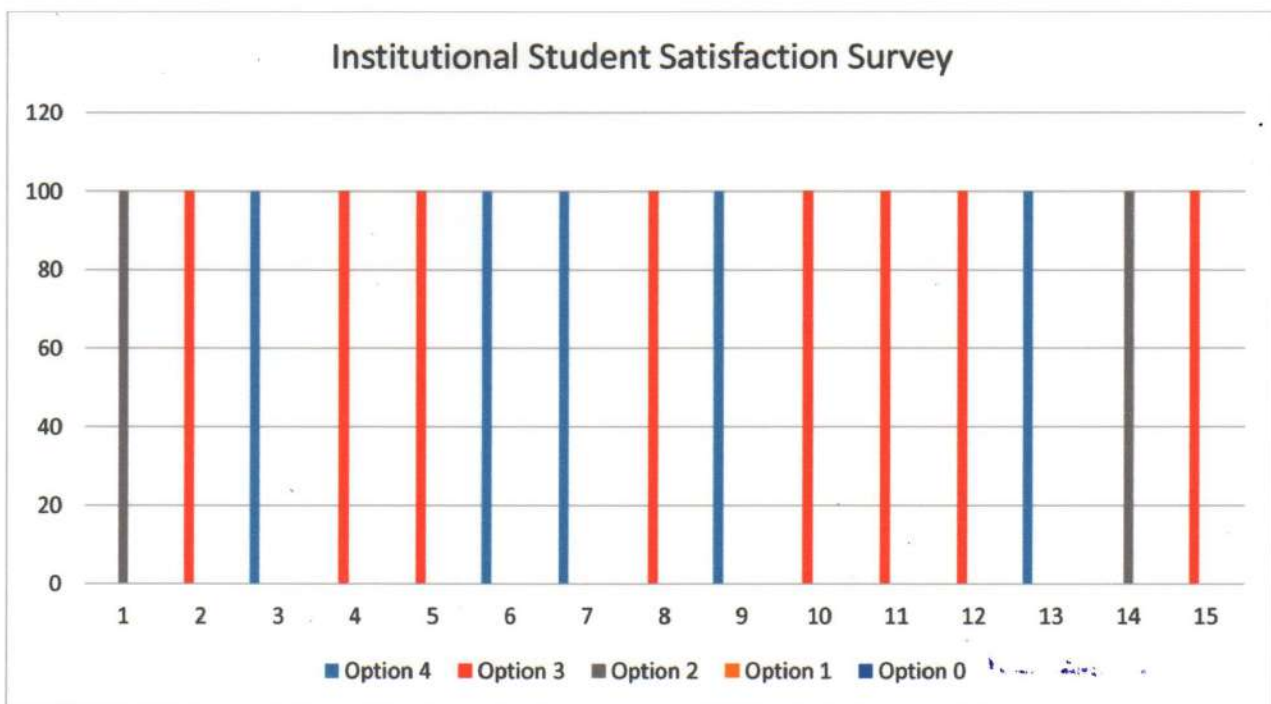


## Remarks and Suggestions by Students

One of the Questions, which was given, 'The teachers inform you about your expected competencies, course outcomes and programme outcomes' to which the elicited response on the Likert scale was less, which suggests an introspection in this regard needs to be done.

## Action Taken on the Remarks and Suggestions

As mentioned above, the Institution through its Feedback on Teachers by Students has analyzed and has taken cognizance of the remarks. Faculty has been given feedback by Principal. During the Induction Programme held in 2020-2021 it was ensured that all the students were apprised of the expected competencies, course outcomes and programme outcomes.



On X-axis – Question number

On Y-axis- Response in %

**For question 1: 100% students responded that 55-69% syllabus was covered in the class.**



**Interpretation:** From the above Graph, it is interpreted that syllabus covered in the class was partially satisfactory.

**For question 2: 100% students responded that teachers were sometimes able to communicate effectively.**

**Interpretation:** From the above Graph, it is interpreted that teachers were able to communicate effectively.

**For question 3: 100% students responded that teachers' approach to teaching was excellent.**

**Interpretation:** From the above Graph, it is interpreted that teachers' approach to teaching was excellent.

**For question 4: 100% students agreed that the internal evaluation process by the teacher is usually fair, honest and impartial.**

**Interpretation:** From the above Graph, it is interpreted that fairness of the internal evaluation process by the teacher is usually honest and impartial.

**For question 5- 100% students responded that performance of assignment usually discussed with them.**

**Interpretation-** From the above graph, it is interpreted that student's performance in assignment is always discussed with them.

**For question 5: 100% students' performance in assignment was always discussed with them.**

**Interpretation:** From the above Graph it is interpreted that students' performance in assignment was always discussed with them.

**For question 6: 100% students responded that the teaching and mentoring process in the College significantly facilitates students in their cognitive, social and emotional growth.**



**Interpretation:** From the above Graph, it is interpreted that the teaching and mentoring process in the College significantly facilitates students in their cognitive, social and emotional growth.

**For question 7: 100% students strongly agreed that the Institution provides multiple opportunities to learn and grow.**

**Interpretation:** From the above graph, it is interpreted that the Institution provided multiple opportunities to learn and grow.

**For question 8: 100% students agreed that teachers usually informed them about expected competencies, course outcomes and programme outcomes usually.**

**Interpretation-** In the above graph, it is interpreted that teachers usually informed them about expected competencies, course outcomes and programme outcomes usually.

**For question 9- 100% students strongly agreed that every times teachers are able to identify students' weakness and help them to overcome their issues.**

**Interpretation:** In the above Graph, it is interpreted that teachers are able to identify students' weaknesses and help them to overcome their issues.

**For question 10: 100% students agreed that the Institution makes efforts to engage students in the monitoring, review and continuous quality improvement of the teaching- learning process.**

**Interpretation:** From the above Graph, it is interpreted that the Institution makes efforts to engage students in the monitoring, review and continuous quality improvement of the teaching- learning process.

**For question 11: 100% students responded that teachers use student-centric methods such as experiential learning, participative learning and problem-solving methodologies for enhancing learning experiences.**



**Interpretation:** From the above Graph, it is interpreted that teachers use student-centric methods such as experiential learning, participative learning and problem-solving methodologies for enhancing learning experiences.

**For question 12: 100% students agreed that teachers encouraged students to participate in extra-curricular activities.**

**Interpretation:** From the above Graph, it is interpreted that teachers encouraged students to participate in extra-curricular activities.

**For question 13: 100% students accepted that efforts have been taken by teachers to inculcate soft skills and employability skills to make them ready for the world of work.**

**Interpretation:** From the above Graph, it is interpreted that efforts have been taken by teachers to inculcate soft skills and employability skills to make them ready for the world of work.

**For question 14: 100% students responded that only 50-69% teachers use ICT tools while teaching.**

**Interpretation:** From the above Graph, it is interpreted that the Institution needs to introspect in this regard. The IQAC and the Office of the Principal have to take cognizance of the same.

**For question 15: 100% students agreed that the overall quality of teaching-learning process in the College is very good.**

**Interpretation:** From the above Graph, it is interpreted that the overall quality of teaching-learning process in the College is very good.





**Appendix – Student Satisfaction Survey Sample Form**

**Bhiwapur Mahavidyalaya**

भिवापूर महाविद्यालय भिवापूर

सत्र: 2018-19

विद्यार्थी समाधान सर्वेक्षण

(Institutional Student Satisfaction Survey / Exit Feedback)

1. Name of the Student-

.....

2. Age - .....Gender -  Female  Male  Transgender

3. What Programme are you pursuing now?

a) Bachelor's  b) Master's

4. What subject are you currently pursuing?

a) Arts  b) Commerce  c) Science  d) Professional   
e) Other

**Note - Please tick  the responses you think are true to the best of your knowledge.**

• How much of the syllabus was covered in the class?

वर्गात कीती टक्के अभ्यासक्रम पूर्ण करण्यात येतो.

4 – 85 ते 100%

3 – 70 ते 84%

2 – 55 ते 69%

1 – 30 ते 54%

0 – Below 30%



- **How well were the teachers able to communicate?**  
शिक्षकांची वर्गातील संवादाची भौली कशी आहे  
4 – नेहमीच परिणामकारक  
3 – कधी कधी परिणामकारक  
2 – फक्त परिणामकारक  
1 – साधारणतः अपरिणामकारक  
0 – फार वाईट संवादशैली
- **The teachers' approach to teaching can be best described as-**  
शिक्षकांचा वर्गात शिकविण्याबाबतचा दृष्टिकोन कसा आहे.  
4 – अति उत्तम  
3 – फार चांगला  
2 – चांगला  
1 – ठीक  
0 – वाईट
- **Fairness of the internal evaluation process by the teachers.**  
अंतर्गत मुल्यांकनाबाबत शिक्षकांचा प्रमाणिकपणा.  
4 – नेहमीच प्रामाणीक  
3 – साधारणतः प्रामाणीक  
2 – कधी कधी अप्रामाणीक  
1 – साधारणतः अप्रामाणीक  
0 – अप्रामाणीक
- **Was your performance in assignments discussed with you?**  
आपण सादर केलेल्या स्वाध्यायासंदर्भात आपणांशी शिक्षक चर्चा करतात काय.  
4 – प्रत्येक वेळी  
3 – सदैव  
2 – प्रासंगिक / कधी-कधी  
1 – अपवादात्मक  
0 – कधीच नाही



- The teaching and mentoring process in your Institution facilitates you in cognitive, social and emotional growth.**  
 महाविद्यालयातील शिक्षण आणि मार्गदर्शन प्रक्रीया आपणांस सामाजिक आणि भावनीक विकासासाठी सहाय्यक आहेत काय.

4 – Significantly  
 3 – Very well  
 2 – Moderately  
 1 – Marginally  
 0 – Not at all
- The Institution provides multiple opportunities to learn and grow.**  
 महाविद्यालयामार्फत शिक्षणासोबतच, आपणांस सर्वांगीन विकासाच्या अनेक संधी उपलब्ध करून दिल्या जातात

4 – पुर्णपणे सहमत  
 3 – सहमत  
 2 – ना सहमत ना असहमत  
 1 – असहमत  
 0 – पुर्णपणे असहमत
- Teachers inform you about your expected competencies, course outcomes and programme outcomes.**  
 आपल्यातील अपेक्षित क्षमता, अभ्यासक्रम आणि अभ्यासक्रमातुन होणारी फलनिश्पत्ती ह्या संदर्भात आपल्याला सुचना करतात काय.

4 – प्रत्येक वेळी  
 3 – सदैव  
 2 – प्रासंगिक / कधी-कधी  
 1 – अपवादात्मक  
 0 – कधीच नाही
- Teachers are able to identify your weaknesses and help you to overcome them.**  
 शिक्षक आपल्यातील कमतरता समजावून घेऊन त्या दूर करण्यासंदर्भात आपली मदत करतात.

4 – प्रत्येक वेळी  
 3 – सदैव  
 2 – प्रासंगिक / कधी-कधी  
 1 – अपवादात्मक  
 0 – कधीच नाही



- The Institution makes effort to engage students in the monitoring, review and continuous quality improvement of the teaching-learning process.  
 विद्यार्थ्यांना देखरेख, पुनरावलोकन आणि अध्यापनात सतत सुधारणा करण्याच्या प्रक्रियेत संस्था सहभागी करून घेते.

4 – पूर्णपणे सहमत  
 3 – सहमत  
 2 – ना सहमत ना असहमत  
 1 – असहमत  
 0 – पूर्णपणे असहमत
- The Institution/ teachers use student-centric methods, such as experiential learning, participative learning and problem solving methodologies for enhancing learning experiences  
 प्रयोगात्मक, सहभागात्मक शिक्षण आणि समस्या सोडविण्यासारख्या, विद्यार्थी केंद्रीत पध्दतींचा उपयोग शिकण्याचा अनुभव उन्नत करण्यामध्ये शिक्षक आणि संस्थेमार्फत केला जातो काय?

4 – पूर्ण प्रयत्न करतात  
 3 – पुरेसे प्रयत्न करतात  
 2 – काही प्रमाणात प्रयत्न करतात  
 1 – फार कमी प्रयत्न करतात  
 0 – अजिबात प्रयत्न करीत नाही
- Teachers encourage you to participate in extra-curricular activities.  
 शिक्षक आपणांस अभ्यासेन्तर उपक्रमांमध्ये सहभागी होण्यासाठी प्रोत्साहित करतात.

4 – पूर्णपणे सहमत  
 3 – सहमत  
 2 – ना सहमत ना असहमत  
 1 – असहमत  
 0 – पूर्णपणे असहमत
- Efforts are made by the Institute /teachers to inculcate soft skills, life skills and employability skills to make you ready for the world of work.  
 तुम्हाला व्यावहारीक जगाचे ज्ञान प्राप्त व्हावे ह्यासाठी सहज कौशल्य, जिवन कौशल्य आणि व्यवहार कौशल्याच्या माध्यमातून संस्था आणि शिक्षक प्रयत्न करतात.

4 – पूर्ण प्रयत्न करतात  
 3 – पुरेसे प्रयत्न करतात



- 2 – काही प्रमाणात प्रयत्न करतात  
1 – फार कमी प्रयत्न करतात  
0 – अजिबात प्रयत्न करीत नाही

- What percentage of teachers use ICT tools such as LCD projector, Multi-media, etc. while teaching.

शिकवितांना LCD Projector, Multi-media ह्यासारख्या संसाधनांचा वापर कीती टक्के शिक्षक करतात

- 90 टक्क्यांच्या वर  
70 ते 89 टक्के  
50 ते 69 टक्के  
30 ते 49 टक्के  
29 टक्का पेक्षा कमी

- The overall quality of teaching-learning process in your Institute is very good.

आपल्या महाविद्यालयातील अध्यापनाची आणि अध्ययनाची प्रक्रिया एकंदर फार चांगली आहे

- 4 – पुर्णपणे सहमत  
3 – सहमत  
2 – ना सहमत ना असहमत  
1 – असहमत  
0 – पुर्णपणे असहमत

- Give three observations/ suggestions to improve the overall teaching-learning experience.

अध्यापनाची आणि अध्ययनाची प्रक्रिया अधिक सक्षम आणि गुणवत्तापुर्ण करण्यासाठी तिन सुचना आणि निरिक्षणे नोंदवा

1. ....  
.....  
.....
2. ....  
.....  
.....
3. ....  
.....



*Johnmuse*  
PRINCIPAL  
Bhiwapur Mahavidyalaya  
Bhiwapur, Dist. Nagpur