



Backward Class Youth relief Committee's

BHIWAPUR MAHAVIDYALAYA, BHIWAPUR

Dist. Nagpur, Maharashtra 441201

Accredited with Grade 'B' (CGPA-2.54) by NAAC, Bengaluru
ISO-9001:2015

29 August 2022

DECLARATION

I, Dr. Jobi George, Principal of Bhiwapur Mahavidyalaya, Bhiwapur humbly apprise the Authorities concerned that the Feedback has been collected in dual mode; Offline and Online.

The reasons for the above are as follows;

- All the students do not possess Android mobile handsets.
- The handsets available with some of the students are being shared by their siblings for educational purposes.
- As the students enrolled in the Institution hail from far of places, the Network connectivity stands to be a prominent issue.
- To overcome all these obstacles and giving due reverence to all those stakeholders who by volition came forward to fill in the Feedback Forms, on demand, were given hardcopies to be filled.
- Thus, the analysis and Action Taken Report has been generated for the perusal of the Authorities concerned and improvisations to be initiated by the Institution.

The above information is true to the best of my knowledge.

Dr. Jobi George
Principal
Bhiwapur Mahavidyalaya

Place – Bhiwapur
Date- 29 August 2022





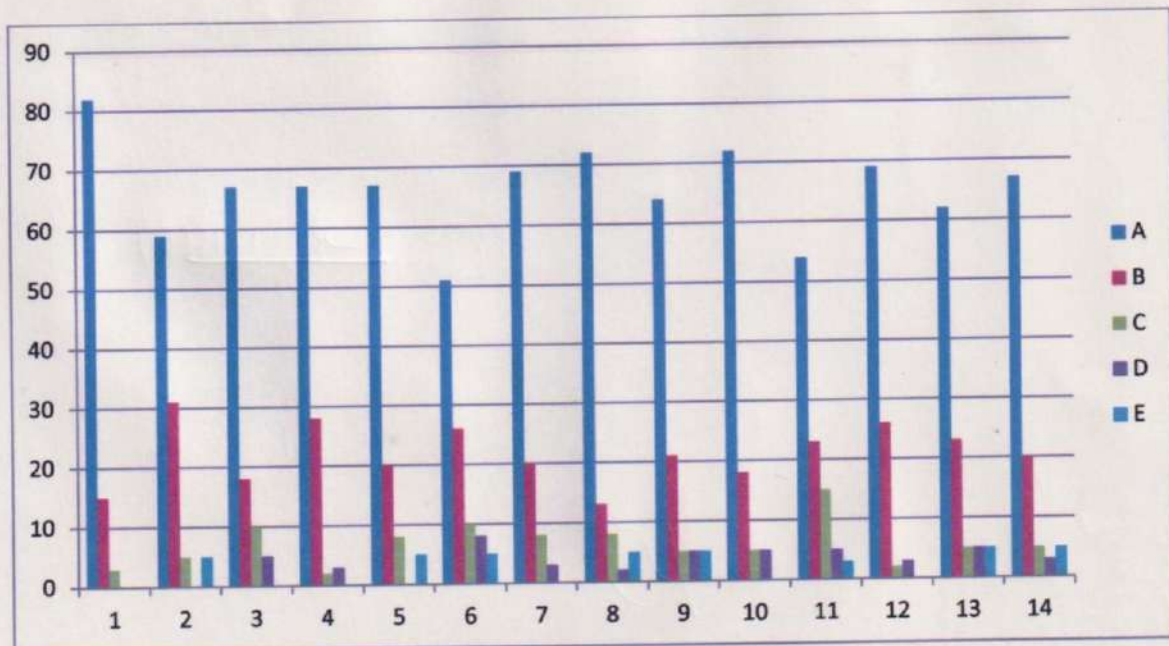
Backward Class Youth relief Committee's
BHIWAPUR MAHAVIDYALAYA, BHIWAPUR

Dist. Nagpur, Maharashtra 441201
 Accredited with Grade 'B' (CGPA-2.54) by NAAC, Bengaluru
 ISO-9001:2015

Academic Session – 2021-22
Feedback from students on Teaching Learning and Evaluation
 Bachelor of Commerce even semester

Link pasted -<https://forms.gle/ebmVuBbKQkwnapa16>

Feedback	Analysis	Remarks and Suggestions	Action Taken
Feedback from students on Teaching-Learning and Evaluation	<p>Learners have given their Responses on a 5 -point Likert Scale for-</p> <p>Option A- Strongly agree- 3.29</p> <p>Option B- agree- 1.08</p> <p>Option C- Neither agree nor disagree - 0.33</p> <p>Option D- Disagree- 0.17</p> <p>Option E- Strongly disagree- 0.14</p> <p><i>The mode of collection was online Goggle form</i></p>	Some Teachers were not very comfortable using ICT enabled tools for the purpose of Teaching and Learning	The subject teachers were informed about their individual scores and they were also encouraged to be more ICT friendly in terms of Teaching and Learning.



On X-axis – Question number



[Signature]
 PRINCIPAL
 Bhiwapur Mahavidyalaya
 Bhiwapur, Dist. Nagpur

On Y-axis- Response in %

- A- Strongly agree
- B- Agree
- C- Neither agree nor disagree
- D- Disagree
- E- Strongly disagree

For question 1 – More than 80% students strongly agreed, 15% agreed and 3% neither agreed nor disagreed.

Interpretation- More than 80% students strongly agreed, 15% agreed and 3% neither agreed nor disagreed that they understand the depth of the course.

For question 2- 59% students strongly agreed, 31% agreed, 5% neither agreed nor disagreed and 5% strongly disagreed

Interpretation- 59% students strongly agreed, 31% agreed, 5% neither agreed nor disagreed and 5% strongly disagreed that extent of coverage of course taught by teacher.

For question 3- 67% students strongly agreed, 18% agreed, 10% neither agreed nor disagreed and 5% disagreed.

Interpretation- 67% students strongly agreed, 18% agreed, 10% neither agreed nor disagreed and 5% disagreed that the ability of the teacher to relate the topic with current situation.

For question 4- 67% students strongly agreed, 28% agreed, 2% neither agreed nor disagreed and 3% disagreed.

Interpretation- 67% students strongly agreed, 28% agreed, 2% neither agreed nor disagreed and 3% disagreed that the entire syllabus is completed in the stipulated time frame.

For question 5- 67% students strongly agreed, 20% agreed, 8% neither agreed nor disagreed and 5% strongly disagreed.

Interpretation- 67% students strongly agreed, 20% agreed, 8% neither agreed nor disagreed and 5% strongly disagreed that teachers are punctual and regular in taking practical and tutorial classes.

For question 6- 51% students strongly agreed 26% agreed, 10% neither agreed nor disagreed, 8% disagreed and 5% strongly disagreed.

Interpretation- 51% students strongly agreed, 26% agreed, 10% neither agreed nor disagreed, 8% disagreed and 5% strongly disagreed that the ICT in the form of web sources, power point presentations are a regular feature of the classroom.

For question 7- 69% students strongly agreed, 20% agreed, 8% neither agreed nor disagreed and 3% disagreed.



Interpretation- 63% students strongly agreed, 29% agreed, 5% disagreed and 3% strongly disagreed that Values are taught from the prescribed syllabus in terms of knowledge, concepts, manual skills, analytical abilities and broadening perspectives.

For question 10- 64% students strongly agreed, 28% agreed, 3% neither agreed nor disagreed, 4% disagreed and 1% strongly disagreed

Interpretation- 64% students strongly agreed, 28% agreed, 3% neither agreed nor disagreed, 4% disagreed and 1% strongly disagreed that Periodical assessments are conducted as per the given schedule.

For question 11- 59% students strongly agreed 29% agreed, 4% neither agreed nor disagreed, 2% disagreed and 6% strongly disagreed.

Interpretation- 59% students strongly agreed, 29% agreed, 4% neither agreed nor disagreed, 2% disagreed and 6% strongly disagreed that Evaluation is fair and unbiased.

For question 12- 63% students strongly agreed 30% agreed, 3% neither agreed nor disagreed, 2% disagreed and 2% strongly disagreed.

Interpretation- 63% students strongly agreed, 30% agreed, 3% neither agreed nor disagreed, 2% disagreed and 2% strongly disagreed that Regular and timely feedback is given for further improvement.

For question 13- 55% students strongly agreed, 33% agreed, 7% neither agreed nor disagreed and 5% disagreed.

Interpretation- 55% students strongly agreed, 33% agreed, 7% neither agreed nor disagreed and 5% disagreed that Teachers are accessible even after lectures.

For question 14- 65% students strongly agreed, 30% agreed, 4% neither agreed nor disagreed and 1% disagreed.

Interpretation- 65% students strongly agreed, 30% agreed, 4% neither agreed nor disagreed and 1% disagreed that Teachers are instrumental in personality development of the students



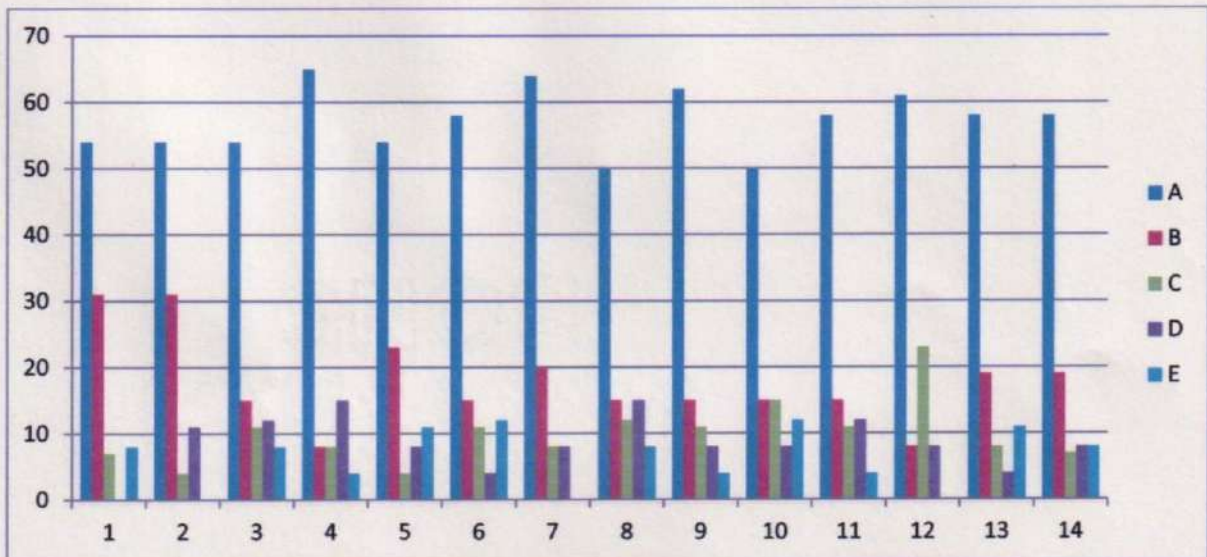
A handwritten signature in blue ink, appearing to read "Ashwini".

PRINCIPAL
Bhiwapur Mahavidyalaya
Bhiwapur, Dist. Nagpur

Bachelor of Vocation

Link pasted below- <https://forms.gle/oxVU4fpsy7AjNmcq6>

Feedback	Analysis	Remarks and Suggestions	Action Taken
Feedback from students on Teaching-Learning and Evaluation	<p>Learners have given their Response on a 5 -point Likert Scale for-</p> <p>Option A- Strongly agree- 2.86</p> <p>Option B- agree- 0.89</p> <p>Option C- Neither agree nor disagree - 0.50</p> <p>Option D- Disagree- 0.43</p> <p>Option E- Strongly disagree- 0.32</p> <p><i>The mode of collection was online Goggle form</i></p>	Some Teachers were not very comfortable using ICT enabled tools for the purpose of Teaching and Learning	The subject teachers were informed about their individual scores and they were also encouraged to be more ICT friendly in terms of Teaching and Learning.



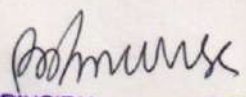
On X-axis – Question number

On Y-axis- Response in %

- A- Strongly agree
- B- Agree
- C- Neither agree nor disagree
- D- Disagree
- E- Strongly disagree

For question 1 – More than 50% students strongly agreed, 31% agreed and 7% neither agreed nor disagreed and 8% strongly disagreed.




 PRINCIPAL
 Bhiwapur Mahavidyalaya
 Bhiwapur, Dist. Nagpur

Interpretation- More than 50% students strongly agreed, 31% agreed and 7% neither agreed nor disagreed and 8% strongly disagreed that they understand the depth of the course.

For question 2- 54% students strongly agreed, 31% agreed, 4% neither agreed nor disagreed and 11% disagreed

Interpretation- 54% students strongly agreed, 31% agreed, 4% neither agreed nor disagreed and 11% disagreed that extent of coverage of course taught by teacher.

For question 3- 54% students strongly agreed 15% agreed, 11% neither agreed nor disagreed, 12% disagreed and 8% strongly disagreed.

Interpretation- 54% students strongly agreed, 15% agreed, 11% neither agreed nor disagreed, 12% disagreed and 8% strongly disagreed that the ability of the teacher to relate the topic with current situation.

For question 4- 65% students strongly agreed 8% agreed, 8% neither agreed nor disagreed, 15% disagreed and 4% strongly disagreed.

Interpretation- 65% students strongly agreed, 8% agreed, 8% neither agreed nor disagreed, 15% disagreed and 4% strongly disagreed that the entire syllabus is completed in the stipulated time frame.

For question 5- 54% students strongly agreed 23% agreed, 4% neither agreed nor disagreed, 8% disagreed and 11% strongly disagreed.

Interpretation- 54% students strongly agreed, 23% agreed, 4% neither agreed nor disagreed, 8% disagreed and 11% strongly disagreed that teachers are punctual and regular in taking practical and tutorial classes.

For question 6- 58% students strongly agreed 15% agreed, 11% neither agreed nor disagreed, 4% disagreed and 12% strongly disagreed.

Interpretation- 58% students strongly agreed, 15% agreed, 11% neither agreed nor disagreed, 4% disagreed and 12% strongly disagreed that the ICT in the form of web sources, power point presentations are a regular feature of the classroom.

For question 7- 64% students strongly agreed, 20% agreed, 8% neither agreed nor disagreed and 8% disagreed.

Interpretation- 69% students strongly agreed, 20% agreed, 8% neither agreed nor disagreed and 3% disagreed that explanation of textual reading material with clarity and relevance

For question 8- 50% students strongly agreed 15% agreed, 12% neither agreed nor disagreed, 15% disagreed and 8% strongly disagreed.

Interpretation- 50% students strongly agreed, 15% agreed, 12% neither agreed nor disagreed, 15% disagreed and 8% strongly disagreed that Information regarding additional reading sources is given.



For question 9- 62% students strongly agreed 15% agreed, 11% neither agreed nor disagreed, 8% disagreed and 4% strongly disagreed.

Interpretation- 62% students strongly agreed, 15% agreed, 11% neither agreed nor disagreed, 8% disagreed and 4% strongly disagreed that Values are taught from the prescribed syllabus in terms of knowledge, concepts, manual skills, analytical abilities and broadening perspectives.

For question 10- 50% students strongly agreed 15% agreed, 15% neither agreed nor disagreed, 8% disagreed and 12% strongly disagreed.

Interpretation- 50% students strongly agreed, 15% agreed, 15% neither agreed nor disagreed, 8% disagreed and 12% strongly disagreed that Periodical assessments are conducted as per the given schedule.

For question 11- 58% students strongly agreed 15% agreed, 11% neither agreed nor disagreed, 12% disagreed and 4% strongly disagreed.

Interpretation- 58% students strongly agreed, 15% agreed, 11% neither agreed nor disagreed, 12% disagreed and 4% strongly disagreed that Evaluation is fair and unbiased.

For question 12- 61% students strongly agreed, 8% agreed, 23% neither agreed nor disagreed and 8% disagreed.

Interpretation- 61% students strongly agreed, 8% agreed, 23% neither agreed nor disagreed and 8% disagreed that Regular and timely feedback is given for further improvement.

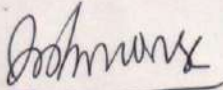
For question 13- 58% students strongly agreed 19% agreed, 8% neither agreed nor disagreed, 4% disagreed and 11% strongly disagreed.

Interpretation- 58% students strongly agreed, 19% agreed, 8% neither agreed nor disagreed, 4% disagreed and 11% strongly disagreed that Teachers are accessible even after lectures.

For question 14- 58% students strongly agreed 19% agreed, 7% neither agreed nor disagreed, 8% disagreed and 8% strongly disagreed.

Interpretation- 58% students strongly agreed, 19% agreed, 7% neither agreed nor disagreed, 8% disagreed and 8% strongly disagreed that Teachers are instrumental in personality development of the students.

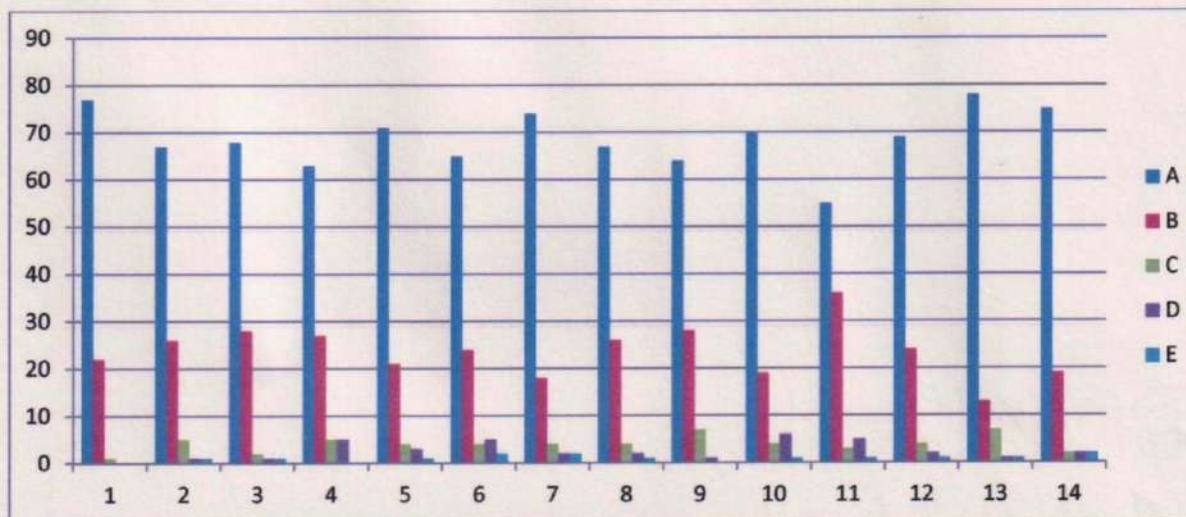



PRINCIPAL
Bhiwapur Mahavidyalaya
Bhiwapur, Dist. Nagpur

Bachelor of Science

Link pasted below- <https://forms.gle/eRVbW1kHirc1dnu99>

Feedback	Analysis	Remarks and Suggestions	Action Taken
Feedback from students on Teaching-Learning and Evaluation	<p>Learners have given their Response on a 5 -point Likert Scale for-</p> <p>Option A- Strongly agree- 3.44</p> <p>Option B- agree- 1.18</p> <p>Option C- Neither agree nor disagree - 0.20</p> <p>Option D- Disagree- 0.13</p> <p>Option E- Strongly disagree- 0.05</p> <p><i>The mode of collection was online Goggle form</i></p>	Some Teachers were not very comfortable using ICT enabled tools for the purpose of Teaching and Learning	The subject teachers were informed about their individual scores and they were also encouraged to be more ICT friendly in terms of Teaching and Learning.



On X-axis – Question number

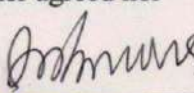
On Y-axis- Response in %

- A- Strongly agree
- B- Agree
- C- Neither agree nor disagree
- D- Disagree
- E- Strongly disagree

For question 1 – 77% students strongly agreed, 22% agreed and 1% neither agreed nor disagreed.

Interpretation- 77% students strongly agreed, 22% agreed and 1% neither agreed nor disagreed that they understand the depth of the course.




PRINCIPAL
 Bhiwapur Mahavidyalaya
 Bhiwapur, Dist. Nagpur

For question 2- 67% students strongly agreed, 26% agreed, 5% neither agreed nor disagreed, 1% disagreed and 1% strongly disagreed

Interpretation- 67% students strongly agreed, 26% agreed, 5% neither agreed nor disagreed, 1% disagreed and 1% strongly disagreed that extent of coverage of course taught by teacher.

For question 3- 68% students strongly agreed 28% agreed, 2% neither agreed nor disagreed, 1% disagreed and 1% strongly disagreed.

Interpretation- 68% students strongly agreed, 28% agreed, 2% neither agreed nor disagreed, 1% disagreed and 1% strongly disagreed that the ability of the teacher to relate the topic with current situation.

For question 4- 63% students strongly agreed, 27% agreed, 5% neither agreed nor disagreed and 5% disagreed.

Interpretation- 63% students strongly agreed, 27% agreed, 5% neither agreed nor disagreed and 5% disagreed that the entire syllabus is completed in the stipulated time frame.

For question 5- 71% students strongly agreed 21% agreed, 4% neither agreed nor disagreed, 1% disagreed and 1% strongly disagreed.

Interpretation- 71% students strongly agreed, 21% agreed, 4% neither agreed nor disagreed, 1% disagreed and 1% strongly disagreed that teachers are punctual and regular in taking practical and tutorial classes.

For question 6- 65% students strongly agreed 24% agreed, 4% neither agreed nor disagreed, 5% disagreed and 2% strongly disagreed.

Interpretation- 65% students strongly agreed, 24% agreed, 4% neither agreed nor disagreed, 5% disagreed and 2% strongly disagreed that the ICT in the form of web sources, power point presentations are a regular feature of the classroom.

For question 7- 74% students strongly agreed 18% agreed, 4% neither agreed nor disagreed, 2% disagreed and 2% strongly disagreed.

Interpretation- 74% students strongly agreed, 18% agreed, 4% neither agreed nor disagreed, 2% disagreed and 2% strongly disagreed explanation of textual reading material with clarity and relevance

For question 8- 67% students strongly agreed 26% agreed, 4% neither agreed nor disagreed, 2% disagreed and 1% strongly disagreed.

Interpretation- 67% students strongly agreed, 26% agreed, 4% neither agreed nor disagreed, 2% disagreed and 1% strongly disagreed that Information regarding additional reading sources is given.

For question 9- 64% students strongly agreed, 24% agreed, 7% neither agreed nor disagreed and 1% disagreed.



Interpretation- 64% students strongly agreed, 24% agreed, 7% neither agreed nor disagreed and 1% disagreed that Values are taught from the prescribed syllabus in terms of knowledge, concepts, manual skills, analytical abilities and broadening perspectives.

For question 10- 70% students strongly agreed 19% agreed, 4% neither agreed nor disagreed, 6% disagreed and 1% strongly disagreed.

Interpretation- 70% students strongly agreed, 19% agreed, 4% neither agreed nor disagreed, 6% disagreed and 1% strongly disagreed that Periodical assessments are conducted as per the given schedule.

For question 11- 55% students strongly agreed 36% agreed, 3% neither agreed nor disagreed, 5% disagreed and 1% strongly disagreed.

Interpretation- 55% students strongly agreed, 36% agreed, 3% neither agreed nor disagreed, 5% disagreed and 1% strongly disagreed that Evaluation is fair and unbiased.

For question 12- 69% students strongly agreed 24% agreed, 4% neither agreed nor disagreed, 2% disagreed and 1% strongly disagreed.

Interpretation- 69% students strongly agreed, 24% agreed, 4% neither agreed nor disagreed, 2% disagreed and 1% strongly disagreed that Regular and timely feedback is given for further improvement.

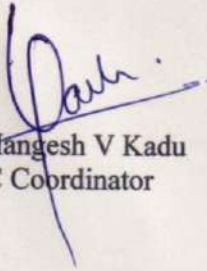
For question 13- 78% students strongly agreed 13% agreed, 7% neither agreed nor disagreed, 1% disagreed and 1% strongly disagreed.

Interpretation- 78% students strongly agreed, 13% agreed, 7% neither agreed nor disagreed, 1% disagreed and 1% strongly disagreed that Teachers are accessible even after lectures.

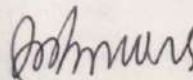
For question 14- 75% students strongly agreed 19% agreed, 2% neither agreed nor disagreed, 2% disagreed and 2% strongly disagreed.

Interpretation- 75% students strongly agreed, 19% agreed, 2% neither agreed nor disagreed, 2% disagreed and 2% strongly disagreed that Teachers are instrumental in personality development of the students

Prepared and submitted by –


Dr. Mangesh V Kadu
IQAC Coordinator




PRINCIPAL
Bhiwapur Mahavidyalaya
Bhiwapur, Distt. Nagpur



Backward Class Youth relief Committee's

BHIWAPUR MAHAVIDYALAYA, BHIWAPUR

Dist. Nagpur, Maharashtra 441201

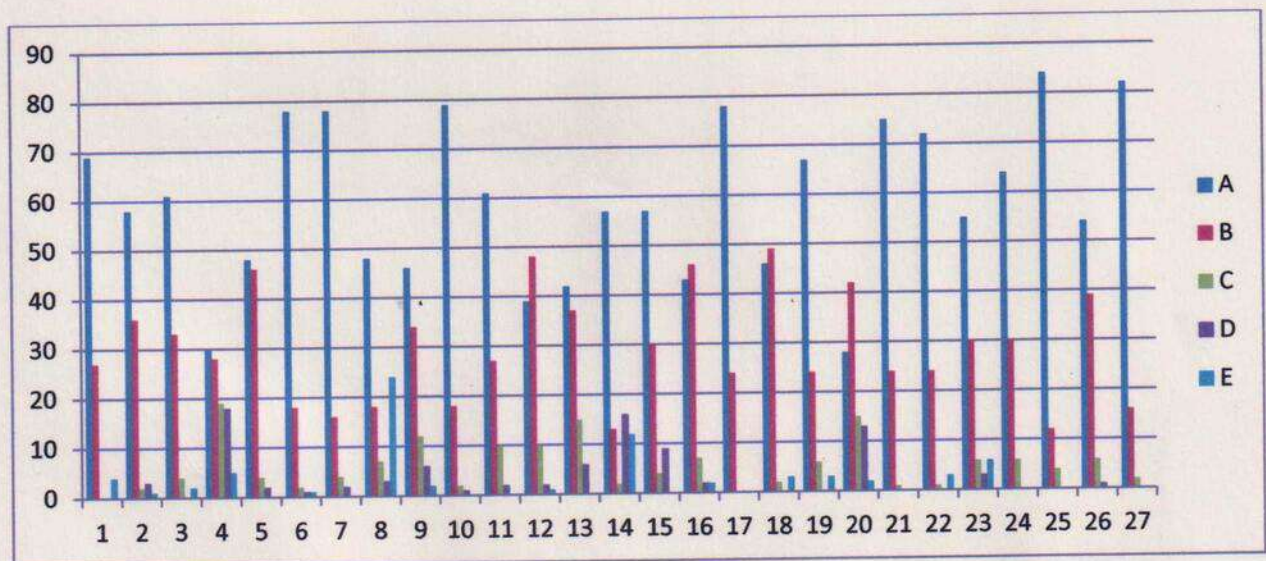
Accredited with Grade 'B' (CGPA-2.54) by NAAC, Bengaluru
ISO-9001:2015

Academic Session – 2021-22 Feedback of Students on College

Form Link-

https://docs.google.com/forms/d/e/1FAIpQLSfryGA7bof_vr2KueiCV6v7Lzq0hDe_MltaDQ1sfRYV-4JgwQ/viewform?vc=0&c=0&w=1&flr=0

Feedback	Analysis	Remarks and Suggestions	Action Taken
Feedback from Students on College	<p>Learners have given their response on a 5 -point Likert Scale for-</p> <p>Option A- Strongly agree- 3.00</p> <p>Option B- agree- 1.46</p> <p>Option C- Neither agree nor disagree- 0.28</p> <p>Option D- Disagree- 0.17</p> <p>Option E- Strongly disagree- 0.13</p> <p><i>The mode of collection was online Goggle form</i></p>	<p>Internet facility should be provided in the College.</p> <p>Students' grievances and problems should be solved well in time.</p>	<p>The in- charge teacher of Internet connectivity has been apprised of the same.</p> <p>Due care and precautions will be taken in this regard.</p>



On X-axis – Question number



[Signature]
PRINCIPAL
Bhiwapur Mahavidyalaya
Bhiwapur, Dist. Nagpur

On Y-axis- Response in %

- A- Strongly agree
- B- Agree
- C- Neither agree nor disagree
- D- Disagree
- E- Strongly disagree

For question 1 – 69% students strongly agreed and 27% agreed.

Interpretation- 69% students strongly agreed and 27% agreed that the office staff of the college is cooperative and helpful

For question 2- 58% students strongly agreed, 36% agreed, 2% neither agreed nor disagreed, 3% disagreed and 1% strongly disagreed

Interpretation- 58% students strongly agreed, 36% agreed, 2% neither agreed nor disagreed, 3% disagreed and 1% strongly disagreed that the library staff is cooperative and helpful.

For question 3- 61% students strongly agreed, 33% agreed, 4% neither agreed nor disagreed and 2% strongly disagreed.

Interpretation- 61% students strongly agreed, 33% agreed, 4% neither agreed nor disagreed and 2% strongly disagreed that online educational resources/prescribed books/reading materials are available and accessible in the library.

For question 4- 30% students strongly agreed 28% agreed, 19% neither agreed nor disagreed, 18% disagreed and 5% disagreed.

Interpretation- 30% students strongly agreed, 28% agreed, 19% neither agreed nor disagreed, 18% disagreed and 5% disagreed that Internet facility is provided in the college.

For question 5- 48% students strongly agreed, 46% agreed, 4% neither agreed nor disagreed and 2% disagreed.

Interpretation- 48% students strongly agreed, 46% agreed, 4% neither agreed nor disagreed and 2% disagreed that Equipment in the lab(s) is/are in good working condition.

For question 6- 78% students strongly agreed 18% agreed, 2% neither agreed nor disagreed, 1% disagreed and 1% strongly disagreed.

Interpretation- 78% students strongly agreed, 18% agreed, 2% neither agreed nor disagreed, 1% disagreed and 1% strongly disagreed that the ICT in the form of web sources, power point presentations are a regular feature of the classroom.

For question 7- 78% students strongly agreed, 16% agreed, 4% neither agreed nor disagreed and 2% disagreed.

Interpretation- 78% students strongly agreed, 16% agreed, 4% neither agreed nor disagreed and 2% disagreed that Results are regularly displayed by the college.



For question 8- 48% students strongly agreed 18% agreed, 7% neither agreed nor disagreed, 3% disagreed and 24% strongly disagreed.

Interpretation- 48% students strongly agreed, 18% agreed, 7% neither agreed nor disagreed, 3% disagreed and 24% strongly disagreed that Toilet/washrooms are clean and properly maintained.

For question 9- 46% students strongly agreed 34% agreed, 12% neither agreed nor disagreed, 6% disagreed and 2% strongly disagreed.

Interpretation- 46% students strongly agreed, 34% agreed, 12% neither agreed nor disagreed, 6% disagreed and 2% strongly disagreed that the classrooms are clean and well maintained.

For question 10- 79% students strongly agreed, 18% agreed, 2% neither agreed nor disagreed and 1% disagreed.

Interpretation- 79% students strongly agreed, 18% agreed, 2% neither agreed nor disagreed and 1% disagreed that the campus is green and eco-friendly.

For question 11- 61% students strongly agreed, 27% agreed, 10% neither agreed nor disagreed and 2% disagreed.

Interpretation- 61% students strongly agreed, 27% agreed, 10% neither agreed nor disagreed and 2% disagreed that The Building/classrooms are accessible to the disabled.

For question 12- 39% students strongly agreed 48% agreed, 10% neither agreed nor disagreed, 2% disagreed and 1% strongly disagreed.

Interpretation- 39% students strongly agreed, 48% agreed, 10% neither agreed nor disagreed, 2% disagreed and 1% strongly disagreed that the campus has adequate power supply with backup facility.

For question 13- 42% students strongly agreed, 37% agreed, 15% neither agreed nor disagreed, and 6% disagreed.

Interpretation- 42% students strongly agreed, 37% agreed, 15% neither agreed nor disagreed, and 6% disagreed that Students grievances are redressed/problems are solved well in time.

For question 14- 57% students strongly agreed 13% agreed, 2% neither agreed nor disagreed, 16% disagreed and 12% strongly disagreed.

Interpretation- 57% students strongly agreed, 13% agreed, 2% neither agreed nor disagreed, 16% disagreed and 12% strongly disagreed that EDC and placement cell is functional in the college.

For question 15 - 57% students strongly agreed, 30% agreed, 4% neither agreed nor disagreed and 9% disagreed.

Interpretation- 57% students strongly agreed, 30% agreed, 4% neither agreed nor disagreed and 9% disagreed that The College gives importance on students' research projects.



For question 16- 43% students strongly agreed 46% agreed, 7% neither agreed nor disagreed, 2% disagreed and 2% strongly disagreed.

Interpretation- 43% students strongly agreed, 46% agreed, 7% neither agreed nor disagreed, 2% disagreed and 2% strongly disagreed that Authorities ensure strict discipline on and off the campus.

For question 17- 78% students strongly agreed and 24% agreed.

Interpretation- 78% students strongly agreed and 24% agreed that Girl students' security is given utmost priority.

For question 18- 46% students strongly agreed, 49% agreed, 2% neither agreed nor disagreed and 3% strongly disagreed.

Interpretation- 46% students strongly agreed, 49% agreed, 2% neither agreed nor disagreed and 3% strongly disagreed that the institution strives for academic excellence.

For question 19 - 67% students strongly agreed, 24% agreed, 6% neither agreed nor disagreed and 3% strongly disagreed.

Interpretation- 67% students strongly agreed, 24% agreed, 6% neither agreed nor disagreed and 3% strongly disagreed that the institution promotes participation of students in co-curricular, extra-curricular, sports and other events at all levels.

For question 20- 28% students strongly agreed 42% agreed, 15% neither agreed nor disagreed, 13% disagreed and 2% strongly disagreed.

Interpretation- 28% students strongly agreed, 42% agreed, 15% neither agreed nor disagreed, 13% disagreed and 2% strongly disagreed that the food provided in the canteen is economical and of good quality as per the standards prescribed.

For question 21- 75% students strongly agreed, 24% agreed that 1% neither agreed nor disagreed.

Interpretation- 75% students strongly agreed, 24% agreed that 1% neither agreed nor disagreed that Students are actively involved in day to day administration.

For question 22 - 72% students strongly agreed, 24% agreed, 1% neither agreed nor disagreed and 3% strongly disagreed.

Interpretation- 72% students strongly agreed, 24% agreed, 1% neither agreed nor disagreed and 3% strongly disagreed that Students are put through Orientation Programmes to make them aware of rules and regulations of the college.

For question 23 - 55% students strongly agreed, 30% agreed, 6% neither agreed nor disagreed, 3% disagreed and 6% strongly disagreed.

Interpretation- 55% students strongly agreed, 30% agreed, 6% neither agreed nor disagreed, 3% disagreed and 6% strongly disagreed that Students are informed on various Scholarship and freeship schemes floated by the government and other funding agencies regularly.



For question 24 - 64% students strongly agreed, 30% agreed that 6% neither agreed nor disagreed.

Interpretation- 64% students strongly agreed, 30% agreed that 6% neither agreed nor disagreed that Information related to Academics and other events is displayed on the Notice boards from time to time.

For question 25- 84% students strongly agreed, 12% agreed that 4% neither agreed nor disagreed.

Interpretation- 84% students strongly agreed, 12% agreed that 4% neither agreed nor disagreed that The Institution is instrumental in bringing social awareness among students through various activities.

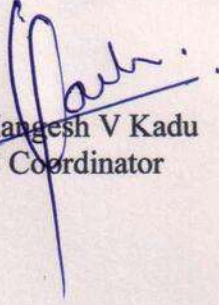
For question 26 - 54% students strongly agreed, 39% agreed, 6% neither agreed nor disagreed and 1% disagreed.

Interpretation- 54% students strongly agreed, 39% agreed, 6% neither agreed nor disagreed and 1% disagreed that The College conducts regular health check-up camps for students.

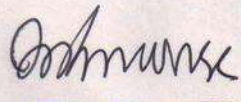
For question 27 - 82% students strongly agreed and 16% agreed.

Interpretation- 82% students strongly agreed and 16% agreed that Sufficient Teaching and Office staff is available.

Prepared and submitted by –


Dr. Mangesh V Kadu
IQAC Coordinator




PRINCIPAL
Bhiwapur Mahavidyalaya
Bhiwapur, Dist. Nagpur

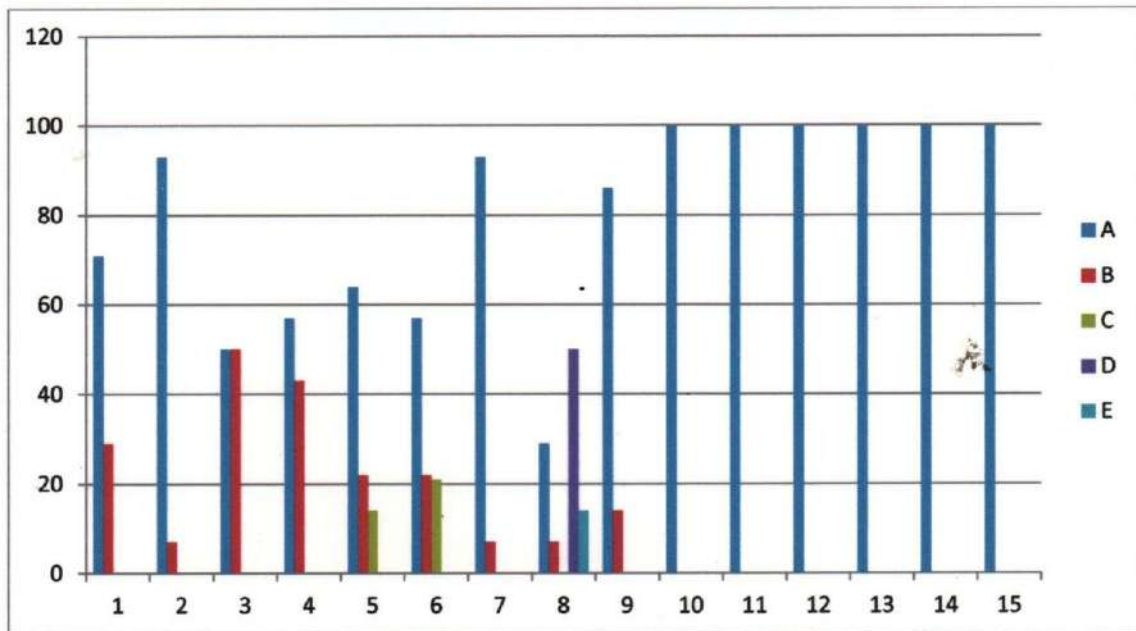


Backward Class Youth relief Committee's
BHIWAPUR MAHAVIDYALAYA, BHIWAPUR

Dist. Nagpur, Maharashtra 441201
 Accredited with Grade 'B' (CGPA-2.54) by NAAC, Bengaluru
 ISO-9001:2015

Academic Session – 2021-22
Feedback of Teacher on college

Feedback	Analysis	Remarks & Suggestions	Action Taken
Feedback from Teacher on College	<p>Teachers have given their response on a 5 -point Likert scale for-</p> <p>Option A- Strongly agree- 4.00</p> <p>Option B- agree- 0.67</p> <p>Option C- Neither agree nor disagree - 0.12</p> <p>Option D- Disagree- 0.17</p> <p>Option E- Strongly disagree- 0.05</p>	<p>Requirement-</p> <p>The books prescribed/listed as Reference materials should be made available in the Library</p>	<p>As per the Budgetary Provisions of the Institution, the required Reference Materials will be procured.</p>



On X-axis – Question number

On Y-axis- Response in %



[Signature]
 PRINCIPAL
 Bhiwapur Mahavidyalaya
 Bhiwapur, Dist. Nagpur

- A- Strongly agree
- B- Agree
- C- Neither agree nor disagree
- D- Disagree
- E- Strongly disagree

For question 1 – 71% Teaching Staff strongly agreed and 29% agreed.

Interpretation- 71% Teaching Staff strongly agreed and 29% agreed that Syllabus is suitable to the course.

For question 2 - 93% Teaching Staff strongly agreed and 7% agreed.

Interpretation- 93% Teaching Staff strongly agreed and 7% agreed that Aims and objectives of the syllabi are well defined and clear to teachers and students.

For question 3 - 50% Teaching Staff strongly agreed and 50% agree.

Interpretation- 50% Teaching Staff strongly agreed and 50% agree that Course content is followed by corresponding reference materials.

For question 4 - 57% Teaching Staff strongly agreed and 43% agreed.

Interpretation- 57% Teaching Staff strongly agreed and 43% agreed that sufficient numbers of prescribed books are available in the Library

For question 5 - 64% Teaching Staff strongly agreed, 22% agreed and 14% neither agree nor disagree.

Interpretation- 64% Teaching Staff strongly agreed, 22% agreed and 14% neither agree nor disagree that the course/syllabus has good balance between theory and Application

For question 6 - 57% Teaching Staff strongly agreed, 22% agreed and 21% neither agree nor disagree.

Interpretation- 57% Teaching Staff strongly agreed, 22% agreed and 21% neither agree nor disagree that the books prescribed/listed as reference materials are relevant, easily available in the Library.

For question 7 - 93% Teaching Staff strongly agreed and 7% agreed.

Interpretation- 93% Teaching Staff strongly agreed and 7% agreed that Infrastructural facilities, such as teacher's rooms, class rooms, reading rooms and toilets are available in the Institution

For question 8 - 29% Teaching Staff strongly agreed, 7% agreed, 50% disagreed and 14% strongly disagreed.

Interpretation- 29% Teaching Staff strongly agreed, 7% agreed, 50% disagreed and 14% strongly disagreed that Separate facility is available for the faculty in the canteen.



For question 9 - 86% Teaching Staff strongly agreed and 14% agreed.

Interpretation- 86% Teaching Staff strongly agreed and 14% agreed that Tests and examinations are conducted well in time with proper coverage of all units in the syllabus.

For question 10 - 100% Teaching Staff strongly agreed.

Interpretation- All Teaching Staff strongly agreed that I have the freedom to adopt new techniques/strategies of teaching such as seminar presentations, group discussions and learners' participations.

For question 11 - 100% Teaching Staff strongly agreed.

Interpretation- All Teaching Staff strongly agreed that I have the freedom to adopt/adapt new techniques/strategies of testing and assessment of students

For question 12 - 100% Teaching Staff strongly agreed.

Interpretation- All Teaching Staff strongly agreed that the environment in the institution is conducive for teaching and research.

For question 13 - 100% Teaching Staff strongly agreed.

Interpretation- All Teaching Staff strongly agreed that the administration is teacher friendly.

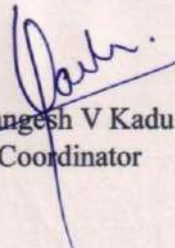
For question 14 - 100% Teaching Staff strongly agreed.

Interpretation- All Teaching Staff strongly agreed that the Institution provides adequate and smooth support for projects and research facilities.

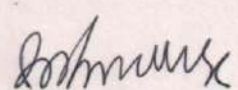
For question 15 - 100% Teaching Staff strongly agreed.

Interpretation- All Teaching Staff strongly agreed that Provisions for professional development are non-discriminatory and fair

Compiled and submitted by –


Dr, Mangesh V Kadu
IQAC Coordinator




PRINCIPAL
Bhiwapur Mahavidyalaya
Bhiwapur, Dist. Nagpur

Specimen Feedback Form



BHIWAPUR MAHAVIDYALAYA, BHIWAPUR

(B Grade with 2.54 CGPA by NAAC Bengaluru)

Feedback of Teacher on College

Internal Quality Assurance Mechanism aims at Continuous Improvement for Academic Excellence and Results

Session – 2021- 2022

Name: _____

Department: _____

Kindly rate the performance on the following attributes on five point scale

Strongly agree- 5.00	Agree- 4.00	Neither agree nor disagree- 3.00	Disagree- 2.00	Strongly disagree- 1.0
A	B	C	D	E

Sr. No	Attributes	Marks				
		A	B	C	D	E
1	Syllabus is suitable to the course.					
2	Aims and objectives of the syllabi are well defined and clear to teachers and students.					
3	Course content is followed by corresponding reference materials.					
4	Sufficient numbers of prescribed books are available in the Library					
5	The course/syllabus has good balance between theory and application					
6	The books prescribed/listed as reference materials are relevant, easily available in the Library.					
7	Infrastructural facilities, such as teacher's rooms, class rooms, reading rooms and toilets are available in the Institution					
8	Separate facility is available for the faculty in the canteen.					
9	Tests and examinations are conducted well in time with					



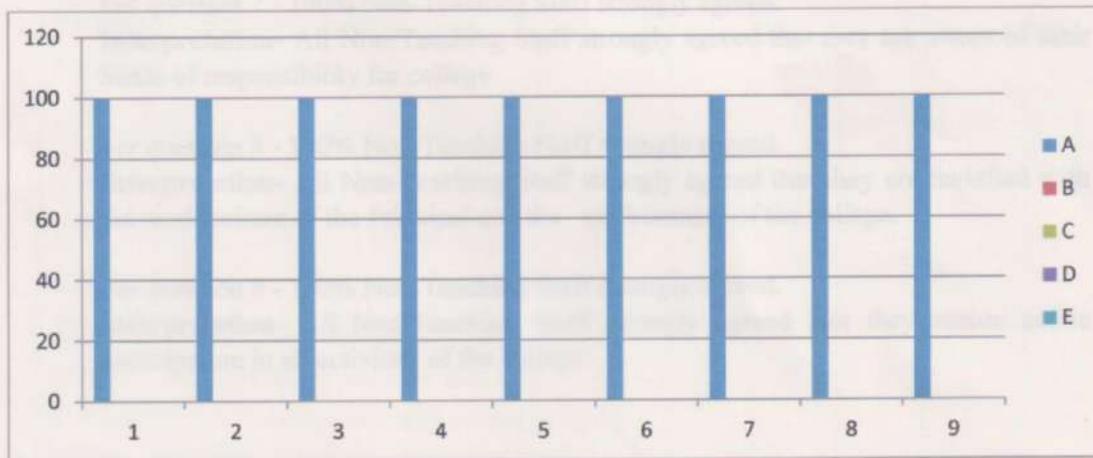


Backward Class Youth relief Committee's
BHIWAPUR MAHAVIDYALAYA, BHIWAPUR

Dist. Nagpur, Maharashtra 441201
 Accredited with Grade 'B' (CGPA-2.54) by NAAC, Bengaluru
 ISO-9001:2015

Academic Session – 2021-22
Feedback of Non-Teaching Staff on College

Feedback	Analysis	Remarks & Suggestions	Action Taken Report
Feedback of Non-Teaching Staff on College	<p>Non- Teaching staff have given their response on a 5 -point Likert scale for-</p> <p>Option A- Strongly agree- 5.00</p> <p>Option B- agree- 0.00</p> <p>Option C- Neither agree nor disagree - 0.00</p> <p>Option D- Disagree- 0.00</p> <p>Option E- Strongly disagree- 0.00</p>	All have reported 5 on a scale of 5 which shows their satisfaction level with the work culture in Institution.	The Feedback given is highly appreciated and it will be binding on the Institution to carry forward the work environment for the growth and development of the Institution and its stakeholders.



On X-axis – Question number

On Y-axis- Response in %

- A- Strongly agree
- B- Agree
- C- Neither agree nor disagree
- D- Disagree
- E- Strongly disagree

For question 1 - 100% Non-Teaching Staff strongly agreed.



[Signature]
 PRINCIPAL
 Bhiwapur Mahavidyalaya
 Bhiwapur, Dist. Nagpur

Interpretation- All Non-Teaching Staff strongly agreed that Modern Technology is used in the day-to day functioning of the college.

For question 2 - 100% Non-Teaching Staff strongly agreed.

Interpretation- All Non-Teaching Staff strongly agreed that ICT is made mandatory for all the employees of the college.

For question 3 - 100% Non-Teaching Staff strongly agreed.

Interpretation- All Non-Teaching Staff strongly agreed that Workshops and Training Sessions are organized to increase the efficiency of non –teaching Staff.

For question 4 - 100% Non-Teaching Staff strongly agreed.

Interpretation- All Non-Teaching Staff strongly agreed that they are Aware of their accountability towards work.

For question 5 - 100% Non-Teaching Staff strongly agreed.

Interpretation- All Non-Teaching Staff strongly agreed that they are ready to help students during their academic sojourn

For question 6 - 100% Non-Teaching Staff strongly agreed.

Interpretation- All Non-Teaching Staff strongly agreed that their Work is done without any partiality or discrimination towards others

For question 7 - 100% Non-Teaching Staff strongly agreed.

Interpretation- All Non-Teaching Staff strongly agreed that they are aware of their Sense of responsibility for college

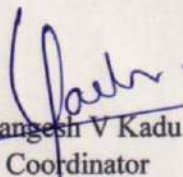
For question 8 - 100% Non-Teaching Staff strongly agreed.

Interpretation- All Non-Teaching Staff strongly agreed that they are Satisfied with the work culture of the Principal and the environment of the college.

For question 9 - 100% Non-Teaching Staff strongly agreed.

Interpretation- All Non-Teaching Staff strongly agreed that they ensure active participation in all activities of the college.

Compiled and submitted by –


Dr, Mangesh V Kadu
IQAC Coordinator



Specimen Feedback Form



BHIWAPUR MAHAVIDYALAYA, BHIWAPUR

(B Grade with 2.54 CGPA by NAAC Bengaluru)

Feedback of Non-Teaching Staff on College

Internal Quality Assurance Mechanism aims at Continuous Improvement for Academic Excellence and Results

Session – 2021-2022

Name: _____

Kindly rate the performance on the following attributes on five point scale

Strongly agree- 5.00	Agree- 4.00	Neither agree nor disagree- 3.00	Disagree- 2.00	Strongly disagree- 1.0
A	B	C	D	E

Sr. No	Attributes	Marks				
		A	B	C	D	E
01	महाविद्यालयाचे कार्यालयीन कामकाजात आधुनिक पध्दतीचा अवलंब केला जातो Modern Technology is used in the day-to day functioning of the college.					
02	महाविद्यालयातील सर्व शिक्षकेत्तर कर्मचाऱ्यांसाठी माहिती व संवाद तंत्र आवश्यक करण्यात आलेले आहे. ICT is made mandatory for all the employees of the college.					
03	शिक्षकेत्तर कर्मचाऱ्यांमध्ये कार्यकुशलता वाढावी यासाठी कार्यशाळा किंवा प्रशिक्षणाचे आयोजन केले जाते Workshops and Training Sessions are organized to increase the efficiency of non –teaching Staff.					
04	आपल्या कार्याप्रती आपण जागरूक आहोत. Aware of our accountability towards work.					
05	आपण विद्यार्थ्यांच्या शैक्षणिक अडचणी दुर करण्यास तत्पर असता Ready to help students during their academic sojourn					





Backward Class Youth relief Committee's

BHIWAPUR MAHAVIDYALAYA, BHIWAPUR

Dist. Nagpur, Maharashtra 441201

Accredited with Grade 'B' (CGPA-2.54) by NAAC, Bengaluru
ISO-9001:2015

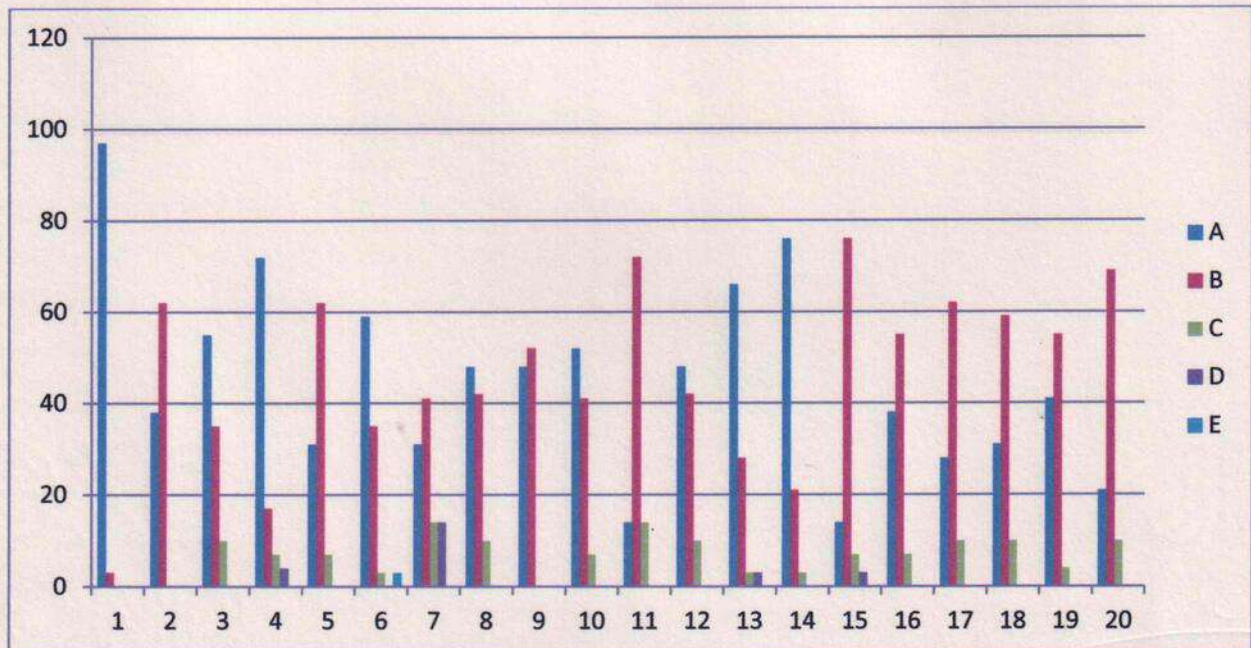
Academic Session – 2021-22

Feedback from Parents on College

Link below-

<https://docs.google.com/forms/d/e/1FAIpQLSfvyk1ZOUJXcO-s7mEBym0FQFWu8VWKzSlstOkoqHgyOBb8-zw/viewform?vc=0&c=0&w=1&flr=0>

Feedback	Analysis	Remarks & Suggestions	Action Taken Report
Feedback from Parents on College	<p>Parents have given their responses on a 5 -point Likert scale for-</p> <p>Option A- Strongly agree- 2.27</p> <p>Option B- agree- 2.32</p> <p>Option C- Neither agree nor disagree - 0.34</p> <p>Option D- Disagree- 0.06</p> <p>Option E- Strongly disagree- 0.00</p> <p><i>The mode of collection was online Goggle form</i></p>	Inability to support and contribute	Motivating parents to actively contribute in the development of the College



On X-axis – Question number



[Signature]

PRINCIPAL
Bhiwapur Mahavidyalaya
Bhiwapur, Dist. Nagpur

On Y-axis- Response in %

- A- Strongly agree
- B- Agree
- C- Neither agree nor disagree
- D- Disagree
- E- Strongly disagree

For question 1 - 97% parents strongly agreed and 3% agreed

Interpretation- 97% parents strongly agreed and 3% agreed that their ward is regular in the college

For question 2 - 38% parents strongly agreed, 62% agreed.

Interpretation- 38% parents strongly agreed, 62% agreed that they make regular enquiries of their ward's progress in study

For question 03 - 55% parents strongly agreed, 35% agreed and 10% neither agreed nor disagreed.

Interpretation-55% parents strongly agreed, 35% agreed and 10% neither agreed nor disagreed that they get information their ward's educational progress through the Progress Card and also by visiting the college

For question 04 - 72% parents strongly agreed, 17% agreed, 7% neither agreed nor disagreed and 4% disagreed.

Interpretation- 72% parents strongly agreed, 17% agreed, 7% neither agreed nor disagreed and 4% disagreed that 'Parent-Teacher Association' functions are conducted in their ward's college

For question 05 - 31% parents strongly agreed, 62% agreed and 7% neither agreed nor disagreed.

Interpretation- 31% parents strongly agreed, 62% agreed and 7% neither agreed nor disagreed that 'The College has contributed to the overall development of their ward'.

For question 06 - 59% parents strongly agreed, 35% agreed, 3% neither agreed nor disagreed and 3% strongly disagreed.

Interpretation-59% parents strongly agreed, 35% agreed, 3% neither agreed nor disagreed and 3% strongly disagreed that their ward should participate in extra-curricular activities other than from curricular activities.

For question 07- 31% parents strongly agreed, 41% agreed, 14% neither agreed nor disagreed and 14% disagreed.

Interpretation-31% parents strongly agreed, 41% agreed, 14% neither agreed nor disagreed and 14% disagreed that they are ready to contribute in the development of the college



For question 08 - 48% parents strongly agreed and 42% agreed, 10% neither agreed nor disagreed.

Interpretation-48% parents strongly agreed and 42% agreed, 10% neither agreed nor disagreed that they are satisfied with the facilities provided by the college

For question 09 - 48% parents strongly agreed and 52% agreed.

Interpretation- 48% parents strongly agreed and 52% agreed that Teacher has pivotal role in the development of parents' educational progress

For question 10 - 52% parents strongly agreed, 41% agreed and 7% neither agreed nor disagreed.

Interpretation- 52% parents strongly agreed, 41% agreed and 7% neither agreed nor disagreed that Significant contribution of the college in the development of Bhiwapur.

For question 11 - 14% parents strongly agreed, 72% agreed and 14% neither agreed nor disagreed.

Interpretation- 14% parents strongly agreed, 72% agreed and 14% neither agreed nor disagreed that they were satisfied with the Placement and employment opportunities provided by the college

For question 12 - 48% parents strongly agreed, 42% agreed and 10% neither agreed nor disagreed.

Interpretation- 48% parents strongly agreed, 42% agreed and 10% neither agreed nor disagreed that they are satisfied with the functioning of Competitive exam. Preparation cell (UPSC/MPSC)

For question 13 - 66% parents strongly agreed, 28% agreed, 3% neither agreed nor disagreed and 3% disagreed.

Interpretation- 66% parents strongly agreed, 28% agreed, 3% neither agreed nor disagreed and 3% disagreed that they were Satisfied with the safety and security of their ward in the college

For question 14 - 76% parents strongly agreed, 21% agreed and 3% neither agreed nor disagreed.

Interpretation- 76% parents strongly agreed, 21% agreed and 3% neither agreed nor disagreed that they were satisfied with the cleanliness and natural environment in the college campus

For question 15 - 14% parents strongly agreed, 76% agreed, 7% neither agreed nor disagreed and 3% disagreed.

Interpretation- 14% parents strongly agreed, 76% agreed, 7% neither agreed nor disagreed and 3% disagreed that they were Satisfied with the functioning of "Parents' Consumer Society" in the college

For question 16 - 38% parents strongly agreed, 55% agreed and 7% neither agreed nor disagreed.



Interpretation- 38% parents strongly agreed, 55% agreed and 7% neither agreed nor disagreed that their level of satisfaction with the quality of education being imparted by the college.

For question 17 - 28% parents strongly agreed, 62% agreed and 10% neither agreed nor disagreed.

Interpretation-28% parents strongly agreed, 62% agreed and 10% neither agreed nor disagreed that the administration of the college strives for the wellbeing of wards and their parents in terms of imparting quality education.

For question 18 - 31% parents strongly agreed, 59% agreed and 10% neither agreed nor disagreed.

Interpretation- 31% parents strongly agreed, 59% agreed and 10% neither agreed nor disagreed that they were satisfied with the performance of non-teaching staff of the college

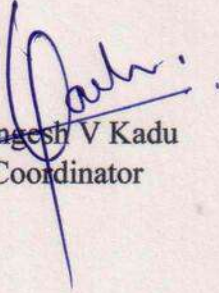
For question 19 - 41% parents strongly agreed, 55% agreed and 4% neither agreed nor disagreed.

Interpretation-41% parents strongly agreed, 55% agreed and 4% neither agreed nor disagreed that the management has key role in the progress of college and its parents

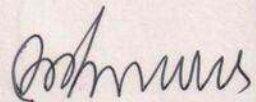
For question 20 - 21% parents strongly agreed, 69% agreed and 10% neither agreed nor disagreed.

Interpretation-21% parents strongly agreed, 69% agreed and 10% neither agreed nor disagreed that they were satisfied with the free and paid consultancy services in the college.

Compiled and submitted by –


Dr, Mangesh V Kadu
IQAC Coordinator




PRINCIPAL
Bhiwapur Mahavidyalaya
Bhiwapur, Distt. Nagpur



Backward Class Youth relief Committee's

BHIWAPUR MAHAVIDYALAYA, BHIWAPUR

Dist. Nagpur, Maharashtra 441201

Accredited with Grade 'B' (CGPA-2.54) by NAAC, Bengaluru

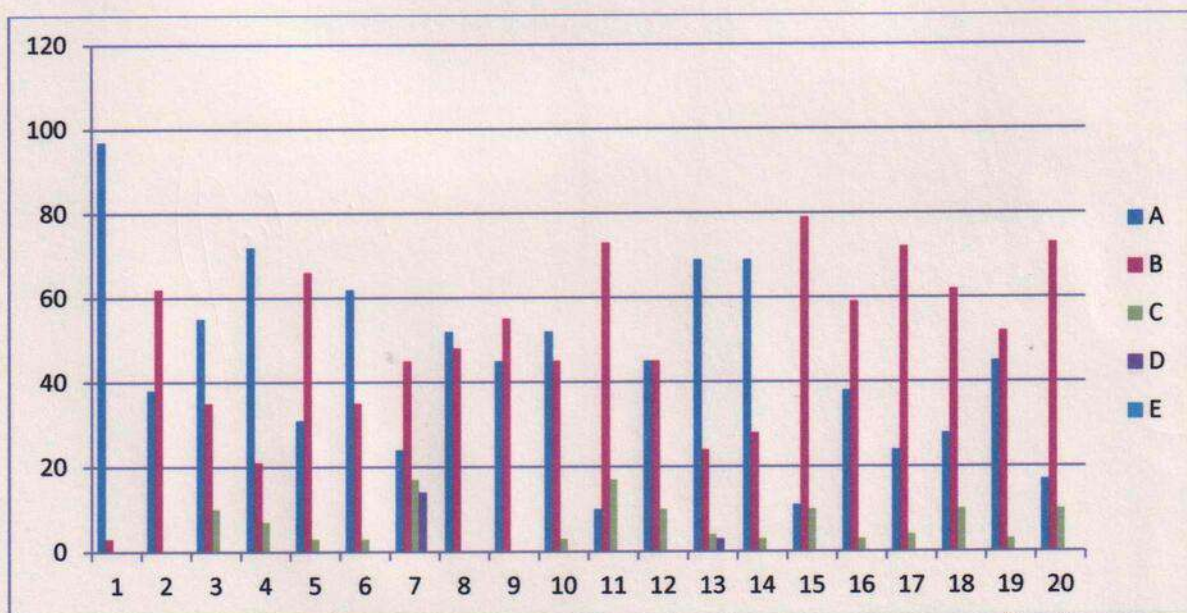
ISO-9001:2015

Academic Session – 2021-22 Feedback from Alumni on College

Link below-

<https://docs.google.com/forms/d/e/1FAIpQLSfuqk1EsE7vSwJ7WTjclJ2dRiJ7VvvVwvzsV9f7J2Hq5NF0dA/viewform?vc=0&c=0&w=1&flr=0>

Feedback	Analysis	Remarks and Suggestions	Action Taken Report
Feedback from Alumni on College	<p>The Members of the Alumni have given their responses on a 5 -point Likert Scale for-</p> <p>Option A- Strongly agree- 2.21</p> <p>Option B- agree- 2.46</p> <p>Option C- Neither agree nor disagree - 0.29</p> <p>Option D- Disagree- 0.04</p> <p>Option E- Strongly disagree- 0.00</p> <p><i>The mode of collection was online Goggle form</i></p>	<p>Inability to support and contribute.</p> <p>College has long term policies for the bright future of the students</p>	<p>Motivating Alumni to contribute generously in the development of the College</p>



On X-axis – Question number



[Signature]
PRINCIPAL
Bhiwapur Mahavidyalaya
Bhiwapur, Dist. Nagpur

On Y-axis- Response in %

- A- Strongly agree
- B- Agree
- C- Neither agree nor disagree
- D- Disagree
- E- Strongly disagree

For question 1 - 97% Alumni strongly agreed and 3% agreed.

Interpretation- 97% Alumni strongly agreed and 3% agreed that The College is keeping up with the changing times.

For question 2 - 38% Alumni strongly agreed, 62% agreed.

Interpretation- 38% Alumni strongly agreed, 62% agreed that The College is empowered to help students achieve their goals.

For question 03 - 55% Alumni strongly agreed, 35% agreed and 10% neither agreed nor disagreed.

Interpretation- 55% Alumni strongly agreed, 35% agreed and 10% neither agreed nor disagreed that Students are acquainted with the Information and Communication Technologies used in the classrooms.

For question 04 - 72% Alumni strongly agreed, 21% agreed and 7% neither agreed nor disagreed.

Interpretation- 72% Alumni strongly agreed, 21% agreed and 7% neither agreed nor disagreed that The Administration of the college is vibrant in nature.

For question 05 - 31% Alumni strongly agreed, 66% agreed and 3% neither agreed nor disagreed.

Interpretation- 31% Alumni strongly agreed, 66% agreed and 3% neither agreed nor disagreed that The College is equipped with sufficient number of computers.

For question 06 - 62% Alumni strongly agreed, 35% agreed and 3% neither agreed nor disagreed.

Interpretation- 62% Alumni strongly agreed, 35% agreed and 3% neither agreed nor disagreed that College Library is updated from time to time.

For question 07- 24% Alumni strongly agreed, 45% agreed, 17% neither agreed nor disagreed and 14% disagreed.

Interpretation- 24% Alumni strongly agreed, 45% agreed, 17% neither agreed nor disagreed and 14% disagreed that College has long term policies for the bright future of the students.

For question 08 - 52% Alumni strongly agreed and 48% agreed.



Interpretation- 52% Alumni strongly agreed and 48% agreed that Satisfied with the Sports and other facilities available in the college.

For question 09 - 45% Alumni strongly agreed and 55% agreed.

Interpretation- 45% Alumni strongly agreed and 55% agreed that they see the Enhancement in the quality of teachers over a period of time.

For question 10 - 52% Alumni strongly agreed, 45% agreed and 3% neither agreed nor disagreed.

Interpretation- 52% Alumni strongly agreed, 45% agreed and 3% neither agreed nor disagreed that Visible and marked benefits in students' personalities from the enhanced quality of teachers.

For question 11 - 10% Alumni strongly agreed, 73% agreed and 17% neither agreed nor disagreed.

Interpretation- 10% Alumni strongly agreed, 73% agreed and 17% neither agreed nor disagreed that College actively involves in Community Development programmes.

For question 12 - 45% Alumni strongly agreed, 45% agreed and 10% neither agreed nor disagreed.

Interpretation- 45% Alumni strongly agreed, 45% agreed and 10% neither agreed nor disagreed that Timely aid is provided to the needy and poor students.

For question 13 - 69% Alumni strongly agreed, 24% agreed, 4% neither agreed nor disagreed and 3% disagreed.

Interpretation- 69% Alumni strongly agreed, 24% agreed, 4% neither agreed nor disagreed and 3% disagreed that their contribution in the development of the college is ensured.

For question 14 - 69% Alumni strongly agreed, 28% agreed and 3% neither agreed nor disagreed.

Interpretation- 69% Alumni strongly agreed, 28% agreed and 3% neither agreed nor disagreed that Alumni are motivated by valuing their efforts through periodic motivation in the form of prizes.

For question 15 - 11% Alumni strongly agreed, 79% agreed and 10% neither agreed nor disagreed.

Interpretation- 11% Alumni strongly agreed, 79% agreed and 10% neither agreed nor disagreed that Alumni are trained to participate in the Cultural Programmes (Dance, Drama etc.)

For question 16 - 38% Alumni strongly agreed, 59% agreed and 3% neither agreed nor disagreed.



Interpretation- 38% Alumni strongly agreed, 59% agreed and 3% neither agreed nor disagreed that they are satisfied with the facilities made available in the Competitive Guidance Centre.

For question 17 - 24% Alumni strongly agreed, 72% agreed and 4% neither agreed nor disagreed.

Interpretation- 24% Alumni strongly agreed, 72% agreed and 4% neither agreed nor disagreed that they are Satisfied with the employment opportunities made available in the college for the students.

For question 18 - 28% Alumni strongly agreed, 62% agreed and 10% neither agreed nor disagreed.

Interpretation- 28% Alumni strongly agreed, 62% agreed and 10% neither agreed nor disagreed that they are Satisfied with the free and paid Consultancy Services offered in the college.

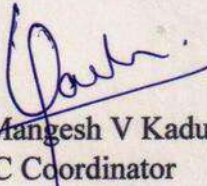
For question 19 - 45% Alumni strongly agreed, 52% agreed and 3% neither agreed nor disagreed.

Interpretation- 45% Alumni strongly agreed, 52% agreed and 3% neither agreed nor disagreed that they are satisfied with the social activities taken up by the College.

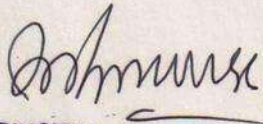
For question 20 - 17% Alumni strongly agreed, 73% agreed and 10% neither agreed nor disagreed.

Interpretation- 17% Alumni strongly agreed, 73% agreed and 10% neither agreed nor disagreed that Full contribution for the overall development of the college is ensured.

Compiled and submitted by –


Dr. Mangesh V Kadu
IQAC Coordinator




PRINCIPAL
Bhiwapur Mahavidyalaya
Bhiwapur, Dist. Nagpur